

SPORTS & PLAY

SYDNEY 2019

INDUSTRY ASSOCIATION LIMITED

NATIONAL CONFERENCE

THURSDAY 29 - FRIDAY 30 AUGUST 2019



Q STATION—NORTH HEAD—SYDNEY HARBOUR



SUPPORTED BY MAPEI & APT ASIA PACIFIC

**1 NORTH
HEAD DRIVE
MANLY
NSW
AUSTRALIA**



THURSDAY 29 AUGUST 2019

- 10 am SOCIAL GOLF**
—Wakehurst Golf Course, Seaforth NSW
- 5-6 pm ANNUAL GENERAL MEETING**
—A20 Dining Room
- 6-10 pm WELCOME PARTY** Sponsored by APT Asia Pacific
—A20 Dining Room

FRIDAY 30 AUGUST 2019

- 9-5 pm NATIONAL CONFERENCE**
—HB1 Hospital Precinct
- 9-5 pm MEMBERS' EXPO**
—HB2 Hospital Precinct
- 6-7 pm PRE-DINNER DRINKS**
—P27 Grand Ballroom Balcony
- 7-10 pm Annual Gala Dinner**—P27 Grand Ballroom
- Industry Awards Presentation
- Fund-raising Auction

**SILVER
SPONSOR**



1 NORTH
HEAD DRIVE
MANLY
NSW
AUSTRALIA

Q STATION

Sydney Harbour National Park - Manly



Spread over a hillside on the very edge of Sydney Harbour, Q Station is the city's former Quarantine Station, an historic site surrounded by 30 hectares of National Park. As a conference venue it is unique, with beautifully refurbished heritage accommodation spread over several different precincts, allowing guests to explore and experience this expansive location. It is one of Australia's significant heritage and environmental landmarks. Carefully restored and sympathetically adapted, Q Station now provides contemporary accommodation, conference facilities, restaurants, visitor's centre and museum with a popular programme of tours and activities.

Located 20 minutes' drive north of the city centre and 35 minutes from Sydney Airport, the property has panoramic views of Sydney Harbour and Manly Cove. Today the site is listed on both State and Commonwealth heritage registers as an integral element of North Head and its Aboriginal, natural and cultural significance. A place of supreme natural beauty, North Head is home to varied flora and fauna. While at Q Station, take a stroll to the cliff tops at North Head, or down the hill to Sydney's famous Manly Beach, with access to ferries that regularly cross Sydney Harbour, or take a short drive to the other renowned surfing spots on the Northern Beaches.

There is a free open air parking area at Reception, and shuttles are available to convey you around the venue.



GETTING THERE - From Sydney Airport

Take the M1 Motorway from Airport Drive or Qantas Drive.

Follow the M1 north across the Harbour. (18.3km)

Take the Military Road exit towards Mosman/Manly (A8).

Turn slightly right onto Falcon Street, follow the A8 (Military Road, Spit Road). (6.6km)

Use the right two lanes to turn onto Sydney Road, signed to Manly. (4.6km)

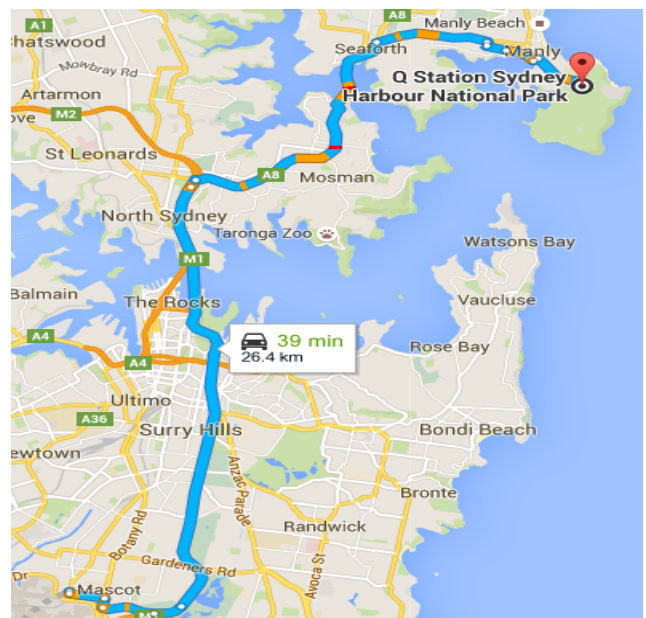
Turn right onto Belgrave Street. Use the left two lanes to turn onto East Esplanade. (250m)

Turn left onto Victoria Parade. (120m)

Turn right onto Darley Road. (1.0km)

Just past Manly Hospital, Darley Road turns slightly right and becomes North Head Drive. (850m)

At the roundabout, the Q Station entrance is on the right.



ACCOMMODATION OPTIONS



Heritage Queen Room

With contemporary décor and a luxurious queen bed, this room has French-style doors leading onto a furnished balcony. These rooms have detached private bathroom facilities, allowing guests an opportunity to live the original Q Station experience. Bathrooms are private to each room and are located only a few steps away.

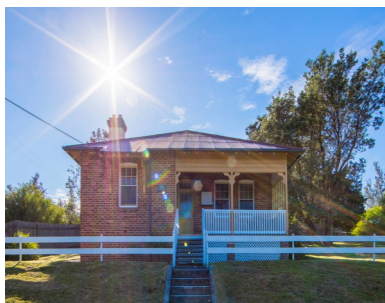
SAPIA Rate: \$209 per night including breakfast for up to 2 guests.



Deluxe Queen Room

The Deluxe queen room is comfortably designed and features an ensuite bathroom. The French-style doors lead out onto a large shared balcony overlooking either the National Park grounds or other historic buildings at Q Station.

SAPIA Rate: \$229 per night including breakfast for up to 2 guests.



Three Bedroom Cottage

Once used as quarantine staff homes, these spacious three bedroom cottages have spectacular views of the grounds, harbour and historic buildings of Q Station. They feature one king room as well as two queen rooms, a living room, bathroom and kitchenette with cooking facilities. While every cottage is different, most feature backyards with balconies or a verandah. Cottages are ideal for small groups or families.

SAPIA Rate: \$550 per night including breakfast for up to 3 guests.

Other accommodation options are available: Heritage Queen Suites, Deluxe Queen Suites, Retreat Suites (suites include a lounge room), and Deluxe Harbourside Rooms. Visit the Q Station's website <https://www.qstation.com.au/room-options.html> to view room options and prices. Q Station is a member of the Accor hotels group, so if you are an Accor Club member, you may like to use the Club rate. To book at the SAPIA discounted rate, call the venue directly and quote BLOCK ID 22123. Please do not leave it till the last minute to book, as you may miss out.

All guests have access to the guest lounges: A28 Carpenters Lounge, P5 Former First Class Dining Room, P6 Former First Class Kitchen and H15 Isolation Lounge. These guest lounges provide a unique place to spend time, providing tea, coffee, vending machines, board games, heritage artefacts, books and a pool table.

Buffet breakfast is served in Views Restaurant from 6-10 a.m. weekdays and 6-11 a.m. weekends.

Hotel Extras:

- Direct access to walking tracks, bike hire, snorkels, stand up paddleboards and kayak hire.
- History Tours, Ghost Tours, Education excursions, Vacation Care programs and a free quarantine-themed Museum in the Visitor Centre.
- Dining at the Boilerhouse Restaurant & Bar, Engine Room Bar, Visitor Centre Café and Views Restaurant.
- Swim in Sydney Harbour at Quarantine Beach.
- Access to the Wharf and Ecohopper Ferry.

If you do not wish to stay onsite at Q Station, there are a number of accommodation options in Manly, including AirBnB, apartment rentals, guest houses and hotels.

How to Book:

Contact Q Station reservations directly on +61 (0)2 9466 1500 or H8773@accor.com and quote BLOCK ID 22123

Rooms are subject to availability and credit card information is required to guarantee the booking. Reception is open 24 hours. Check in time - from 2 p.m.; Checkout time - 10 a.m.

Early or late checkout is subject to availability and may incur additional charges.

THURSDAY 29 AUGUST 2019

SAPIA Social Golf THE EDO TROPHY



SAPIA's annual Ambrose rules social golf tournament, the **EDO TROPHY**, will be held on Thursday 29 August, commencing at 10 a.m. at Wakehurst Golf Club at Seaforth, 15 minutes' drive from Q Station. The course is in a unique bushland setting with views over Manly Dam Reserve to the Pacific Ocean. No prior golfing experience is necessary, as the emphasis is on fun. SAPIA members and guests are welcome to participate. The event is limited to 20 players, so register early. SAPIA Manufacturer Member **FIELDTURF AUSTRALIA** has generously sponsored this event, so there is no cost to players.

ANNUAL GENERAL MEETING

Our **AGM** will be held on Thursday evening, starting at 5 p.m. Thursday 29 August in the Q Station's A20 Dining Room. All members are encouraged to attend. The President will present his annual report, the secretary/treasurer the financial reports and the election of the SAPIA Board for 2020 will be held. Nomination forms for directors will be provided closer to the event.

WELCOME PARTY



Immediately following our AGM on Thursday evening in the historic A20 Dining Room, we will gather for our pre-conference **Welcome Party**.

Three hours of canapes and four hours of beverages will be served from 6 p.m.

The A20 has a verandah which runs the length of the building as well as an ante room, so there is plenty of space for everyone to come along and have a fun evening catching up with old friends and making new ones, while sampling the historical ambience of the heritage listed Q Station.

Our Welcome Party has again been made possible by the generous support of our National Conference Silver Sponsor **APT ASIA PACIFIC**.

FRIDAY 30 AUGUST 2019

SAPIA NATIONAL CONFERENCE

Friday's **National Conference** will be held in the Hospital Precinct Rooms, commencing at 8.30 a.m. with registration, and concluding at 5.00 p.m. Morning and afternoon teas and buffet lunch are included and will be served on the balconies which overlook Manly Cove on one side and Sydney Harbour on the other. Our program and presenters will be announced shortly.

This year we will again offer a small number of **Exhibition Spaces** or **Tables** for those members who wish to exhibit their products or services to delegates, at a cost of \$250 each.



ANNUAL GALA DINNER

Our **Annual Gala Dinner** will commence at 6.00 p.m. with pre-dinner drinks on the balcony of the P27 Grand Ballroom, with a 3 course alternate-drop meal and first class beverage package following from 7.00 p.m.

During dinner all the entries received in this year's **Industry Awards** competition will be shown, winners announced and trophies presented. Entry forms and instructions will be issued shortly, so start gathering photographs and planning your entries.

Our fund-raising **Auction** of items donated by our members and supporters will also be conducted during our Annual Dinner. If you wish to donate, please contact the SAPIA office.

This is a night to applaud your own achievements as well as those of your fellow members who are working together to uphold the highest standards of construction, design, manufacture and service.

We hope you and your guests will join us for our once-a-year celebration.

