

SPORTS & PLAY

INDUSTRY ASSOCIATION LIMITED

MEMBER DIRECTORY

Current December 2019



THE PEAK INDUSTRY BODY FOR
SPORTS AND RECREATION CONSTRUCTION IN AUSTRALASIA
BUILDERS & INSTALLERS—MANUFACTURERS & SUPPLIERS—PROFESSIONAL SERVICES
www.sapia.org.au

OUR HISTORY



SPORTS
contractors association limited

**SPORTS
& PLAY**
MEMBER
INDUSTRY ASSOCIATION LIMITED

The **SPORTS AND PLAY INDUSTRY ASSOCIATION (SAPIA)** is the peak industry body for sports, play and recreation construction in Australasia.

Our members are specialists in the design, construction, installation, maintenance, manufacture, supply and testing of sports and play spaces, both domestic and commercial.

SAPIA is a not-for-profit association, established to promote the best construction standards and business practices for the benefit of both members and their customers, as well as to contribute to the safe sporting pleasure of participants who use facilities constructed and/or serviced by members of the Association.

Formed in 2000, we were initially known as the Tennis Court and Sports Field Builders Association of Australasia. We changed our name to the Sports Contractors Association in 2004 as our membership expanded to encompass not only builders but also sports equipment suppliers and professional consultants. In 2016, with the further broadening of our membership to include specialist playground contractors and suppliers, the association rebranded as the Sports and Play Industry Association.

SAPIA members include builders, sub-contractors, manufacturers, suppliers, and professional consultants. They have expertise in building and surfacing all types of sports and recreation areas, including tennis courts, playgrounds, basketball and netball courts, bowling greens, hockey fields, squash courts, athletic tracks, equestrian arenas, soccer fields, cricket pitches, golf greens, baseball fields, rugby and AFL fields, skateboard parks and velodromes. Members manufacture and install sports flood lighting, fencing, all types of nets, net and goal posts, basketball towers, safety padding, shade structures and shade sails, synthetic grass and acrylic surfacing materials as well as ancillary products. Consultants provide professional and technical services, including testing to Australian and international standards.

SAPIA members must comply with strict membership criteria and abide by the Association's Code of Ethics and Constitution. They are kept up to date with the latest advances in sporting surfaces, construction and installation techniques and equipment technology. SAPIA is represented on Standards Committees in sports and playground surfacing and equipment, lighting and fencing.

The following pages contain profiles and contact details provided by each of our members, current at time of printing (August 2019). Visit the SAPIA website www.sapia.org.au for up-to-date membership listings and information.

For project advice or quotations, contact SAPIA members directly or, alternatively, the SAPIA office on **1800 208 202** (Australia) or **0800 208 202** (New Zealand).

PRINCIPAL CONTRACTORS DIVISION

QUEENSLAND

All Sport Projects • Centrecourt Constructions • Court Craft • Dynamic Sports Facilities
Custom Court Constructions • Grassports Queensland • Jordin Sports Constructions

NEW SOUTH WALES

All Grass Sports Surfaces • Champion Sports Grounds • Court Craft • Dynamic Sports Facilities
Glooloo Surfacing • Kangaroo Courts • KCL Sports • Recreational Surfacing
Riverina Sporting Services • Sports Build • Sportszone Group
Synthetic Grass & Rubber Surfaces • Synthetic Sports Group

VICTORIA

A.S. Lodge • ABS Sports Fields • Budget Tennis Courts • Grassports Australia • Kevin McNamara & Son
Recreational Turf Surfaces • SM Cantwell Pools & Courts • Spot On Synthetics • Turf One

TASMANIA

Blacktac

SOUTH AUSTRALIA

Boag Construction • Greenplay Australia • Surfacing Contractors Australia • TEB Contractors

WESTERN AUSTRALIA

All Seasons Synthetic Turf • Astro Synthetic Surfaces • Evergreen Synthetic Grass
Green Planet Grass • Sports Surfaces • West Coast Sporting Surfaces

NORTHERN TERRITORY

Surfacing & Playgrounds • NT Shade

SURFACING CONTRACTORS DIVISION

QUEENSLAND

Grundy Synthetic Surfaces • Norm East Sports Surfacing • ProOne Sofffall • Sportzing Court Care Services

NEW SOUTH WALES/A.C.T.

Bruce's Playgrounds • Courtmaster Sports Surfacing • Synthatech Australia

VICTORIA

Matchpoint Systems • RubberTough Industries • Sports Courts Victoria

TASMANIA

Tasmanian Sports Surfaces

WESTERN AUSTRALIA

Perth Playground & Rubber

ASSOCIATE CONTRACTORS DIVISION

Courtcare • MPC Fencing • Play-safe Services • Precision Sports + Lighting • Ross Earthmoving
Sports Clean • Sports Construction Group • Sportzing Court Care Services • The Fence Consultant

MANUFACTURERS & SUPPLIERS DIVISION

AFN Sports • Allsports Products • APT Asia Pacific • Australian Surfacing Supplies
California Sports Surfaces • Chemical Technology • Cool Rubber • FieldTurf Australia
Grand Slam Sports Equipment • Greenplay Australia • HiTech Sports • Industrial Organics
Innovation With Energy • Jasstech • KDF Ltd • Kelmatt Australia • Mapei Australia • Otter Fencing • Oxley Nets
Play Hard Sports Equipment • Playsafe Fencing • Rae-line • Smartlux • Sportscomm • Sportzing Court Care Ser-
vices • Surface Designs • TigerTurf Australia • Trocellen S.E.A • Tyrecycle • Urban Turf Solutions

PROFESSIONAL SERVICES DIVISION

Acousto-scan • Dalton Consulting Engineers • Dart Marketing • Labosport
Smart Connection Consultancy • Sofffall Testing NT

AFFILIATE MEMBERS

American Sports Builders Association (ASBA) • Australian Sports Foundation • Australian Leisure Management
J.T. Davies & Co Engineers (honorary member) • Dr David Eager (honorary member)
George Apted & Associates (honorary member) • Maurice Philp (honorary member)
Sports & Play Construction Association (SAPCA) • The Synthetic Turf Council (STC)

PRINCIPAL CONTRACTORS

A.S. LODGE

VICTORIA

A.S. Lodge commenced work in synthetic recreational construction in 1979. Since this time they have constructed over 3,500 tennis courts for municipal councils, schools, universities, clubs and domestic clients. Over the past 38 years A.S. Lodge have won a multitude of awards for construction for both private tennis courts and club complexes. A.S. Lodge have the ability to undertake a full design and construct contract where they draw on their vast wealth of knowledge and experience to deliver the full 'turn key' project. A.S. Lodge combines their membership of the Australian Institute of Engineers and formal training to develop the best synthetic surfaces available including: Tennis, Hockey, Cricket. Floodlighting and Accessories including Basketball; Netball; Volleyball; Golf; Ball machines; Umpire stands.

Address: Factory 14/114 Merrindale Drive, Kilsyth VIC 3137
Phone: 03 9761 4930
Email: info@asltennis.com
Web: www.asltenniscourts.com



ABS SPORTS FIELDS

VICTORIA

ABS Sport Fields has set high standards for innovation, cost effective design and construction of installations ranging from small to very large multi-use surfaces. ABS Sport Fields has always been innovative in design and construction of its base works, and its sport surface types, and continues to dedicate resources to improvements that will benefit the industry and keep ABS Sports Fields and its customers a step ahead. We have constantly been driven to be creative; to find a new solution; to find a better way; to give the customer more than they dreamed and for less than they expected. With our head office in Melbourne, we are designing, constructing and installing in every state of Australia, as well as numerous sports fields overseas, ABS Sport Fields continues to push the boundaries of quality design, construction and installation.

Address: 3 Cochrane Street, Mitcham VIC 3132
Phone: 03 9873 0101
Email: jmicheel@berrysportssystems.com.au
Web: www.abs-sportsfields.com.au



ALL GRASS SPORTS SURFACES

NEW SOUTH WALES

All Grass Sports Surfaces has been at the forefront of tennis court and sports field construction and maintenance for over twenty years. In that time, AGSS has built over 1,500 tennis courts and sports facilities, both domestic and commercial, throughout Sydney and country NSW and the ACT. As well as building tennis courts, AGSS builds and surfaces all types of indoor and outdoor sports courts, including netball courts, basketball courts, multi-sport courts, cricket wickets and practice nets for schools, private residences and commercial facilities. AGSS is a 'one stop' shop, providing design, project management, construction and ongoing maintenance services to ensure courts gives customers years of playing pleasure. Call former elite tennis player and AGSS owner Mark Edmondson for all your sports surfacing requirements.

Address: 6 Bundara Close, Mona Vale NSW 2103
Phone: 02 9979 2447 / 0412 476 270
Email: mark@allgrasssportssurfaces.com.au
Web: www.allgrasssportssurfaces.com.au



PRINCIPAL CONTRACTORS



ALL SEASONS SYNTHETIC TURF

WESTERN AUSTRALIA



ASST is Perth's leading synthetic surfacing company. We have built strong relationships with a wide variety of sectors, local government, schools, mining companies, sporting facilities, commercial and residential.

Address: 5/1 Fielden Way, Port Kennedy WA 6172
Phone: 1300 931 443 / 08 9524 6065
Email: info@asst.net.au
Web: www.allseasonssyntheticurf.com.au



ALL SPORT PROJECTS

QUEENSLAND



All Sport Projects do more than just surface sports courts, if you have a sport, we can build it, from start to finish. We are your one stop shop for everything sports. Over the years we have developed a strong professional relationship with a variety of clients including schools, councils, mining companies, sporting associations, military, commercial and private, both in Australia and overseas. Combined with a highly competent and well trained work force, our senior management team has over 70 years combined experience within the industry. From tennis courts, cricket pitches, golf practice and golf driving ranges, landscaping with synthetic lawns, kindergartens, play areas, swimming pool, leisure areas and much more, we are your complete turnkey solution.

Address: 2, 39 Ern Harley Drive, Burleigh Heads QLD 4220
Phone: 07 5593 6691 / 1800 997 080
Email: sales@allsportprojects.com.au
Web: www.allsportprojects.com.au

ASTRO SYNTHETIC SURFACES

WESTERN AUSTRALIA



Astro Synthetic Surfaces supply and install softfall rubber and synthetic turf for all surfaces: high-quality soft fall playgrounds surfaces, water play grounds, splash parks, synthetic grass, rubber mulch and cricket pitches fully built to Australian standards.

Address: 468 Great Eastern Highway, Ascot WA 6104
Phone: 08 9472 0021
Email: sales@astrowa.com.au
Web: www.astrosyntheticssurafces.com.au

BLACKTAC

TASMANIA



Blacktac are leaders in commercial and residential surface construction, specialising in tennis and netball court surfaces, driveways, roadways and car parks, and recreational areas. Founded in 1975, Blacktac is a Tasmanian owned company leading the way in surface construction from asphalt driveways and roadways to Plexipave and synthetic grass surfaces.

Address: 448 Westbury Road, Prospect TAS 7250
Phone: 03 6344 5723 / 0417 331 001
Email: blacktac@bigpond.com
Web: www.blacktac.com.au

SAPIA MEMBER DIRECTORY

PRINCIPAL CONTRACTORS



BOAG CONSTRUCTION

BoagSPORTS Surfaces have a passion for sports construction. We've been leaders in the industry for more than 30 years, installing the best quality surfaces on time, every time, with over 1000 sports surface installations completed in Australia and overseas. We construct and surface bowling greens, tennis courts, sports fields, school ovals.

Address: PO Box 542, Magill, SA 5072
Phone: 08 8390 1393 / 1300 762 360
Email: info@boagconstruction.com.au
Web: www.boagsports.com

SOUTH AUSTRALIA

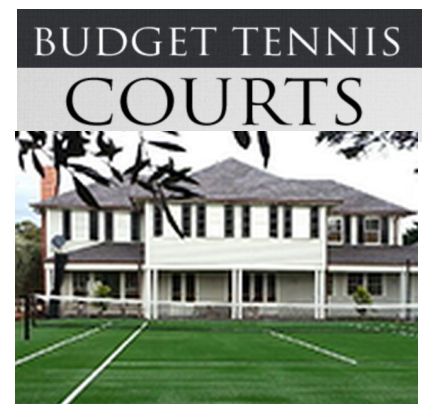


BUDGET TENNIS COURTS

Budget Tennis Courts, established in 1988, specialise in new tennis court design and construction, with a choice of synthetic grass, Rebound Synpave, classic clay, granitic sand or asphalt surfaces to meet your requirements. We also re-surface existing tennis courts and do tennis court conversions. Budget Tennis Courts also construct multi use sporting field surfaces. We also offer contract precision laser levelling services.

Address: P.O. Box 231 Baxter VIC 3911
Phone: 03 9775 5571 / 0415 543 321
Email: sales@budgettenniscourts.com
Web: www.budgettenniscourts.com

VICTORIA



CHAMPION SPORTS GROUNDS

Champion Sports Grounds was founded upon 20 years' global experience in school sports ground construction and council and sports club facilities installation – be it natural grass, synthetic grass, concrete or asphalt. Champion Sports Grounds specialise in quality school sports grounds construction. Sydney and NSW schools and sports clubs look to us for an exceptional service, value for money and high quality products and standard of workmanship.

Address: 15 Dickin Avenue, Sandringham NSW 2219
Phone: 02 9529 9516 / 0426 255 911
Email: sales@championsportsgrounds.com.au
Web: www.championsportsgrounds.com.au

NEW SOUTH WALES



CIVIL AND SPORTS CONSTRUCTION

Civil & Sports Constructions trades as CentreCourt Constructions, and has been building quality sports facilities since 1988. We are a Department of Education preferred supplier who services Qld and NNSW. We specialise in tennis courts, netball courts, multipurpose courts, residential, athletic tracks, volleyball courts, sprint tracks, hockey fields and soccer/football fields for schools, universities, and sporting clubs. We do it all! Earthworks, fencing, lighting, base works, surfacing, retaining and accessories. Call us for a site visit and free quotation.

Address: 4/39 Elgin Street, Alderley QLD 4051
Phone: 07 3353 1891
Email: admin@centrecourtconstructions.com.au
Web: www.centrecourtconstructions.com.au

QUEENSLAND



PRINCIPAL CONTRACTORS



COURT CRAFT

NEW SOUTH WALES



Court Craft have over 20 years' experience as a sports facility construction company. We specialise in the construction, design and maintenance of sport and recreational facilities plus general structural landscaping and civil construction. Court Craft carries out all aspects of a project from planning, Council submissions, construction of facilities and amenities, lighting systems, landscaping, maintenance etc. Court Craft construct facilities for: Basketball, Football, Hockey, Lawn Bowls, Netball, Tennis and Volleyball.

Address: 55 Loftus Street, Riverstone NSW 2765
Phone: 1800 996 353 / 02 9763 2900
Email: information@courtcraft.com.au
Web: www.courtcraft.com.au

CUSTOM COURT CONSTRUCTIONS

QUEENSLAND



Custom Court Constructions has a total of 30 years' experience throughout Australia in the construction and installation of tennis courts, sporting facilities, landscaping and maintenance. Concrete, roadbase and asphalt bases, Sport facility lighting and fencing, Supply and installation of sporting equipment, Multisport Courts as well as Basketball – Netball – Volleyball, Activities: Handball, hopscotch, chess, alphabet, numbers and lots more, Running tracks, long jump run ups etc.

Address: PO Box 638, Burpengary Qld 4505
Phone: 0429 772 383 / 0429 772 006
Email: ccc10@tpg.com.au

DYNAMIC SPORTS FACILITIES

NEW SOUTH WALES/QUEENSLAND



Dynamic Sports Facilities is a civil construction company operating in NSW, Victoria and Queensland, specialising in the sports industry. Dynamic Sports Facilities specialises in the design and construction or refurbishment of multi-functional, low maintenance, indoor and outdoor sporting facilities and tennis courts for both public and private use, from concept to completion. Our designs take into account the natural character of each site while employing sound landscaping practices that preserve and enhance the biological health, stability and diversity of the natural environment.

Address: PO Box 1915, Bowral NSW 2576
Phone: 1300 653 130 / 02 4869 1816 / 0418 264 165
Email: sales@dynamicssportsfacilities.com.au

EVERGREEN SYNTHETIC GRASS

WESTERN AUSTRALIA



Evergreen Synthetic Grass (WA) have been supplying and installing artificial grass since 1996. Evergreen specialises in bowling greens and synthetic sports surfacing.

Address: 23 Langar Way, Landsdale WA 6065
Phone: 08 9303 2130 / 0417 770 010
Email: nicola@evergreenwa.com.au
Web: www.evergreensyntheticgrass.com.au

PRINCIPAL CONTRACTORS



GLOOLOOP SURFACING

NEW SOUTH WALES

Glooloo Surfacing supply and install wetpour rubber softfall, synthetic grass and permeable paving for playgrounds, schools, childcare centres and domestic areas. Their service includes all associated ground works, base preparation and drainage as well as landscape construction, paving, sandstone, timber, blockwork and planting. Licence # 264768C.

Address: 3/17A Amax Avenue, Girraween NSW 2145
Phone: 02 8443 0113
Email: spencer@glooloo.com.au
Web: www.glooloo.com.au



GRASSPORTS AUSTRALIA

VICTORIA/QUEENSLAND

With a 45 year trading history and offices in Melbourne, Sydney and the Gold Coast, Grassports specialises in full turnkey construction of synthetic sports facilities. Grassports construct all sports from domestic tennis courts to FIFA certified soccer or FIH certified hockey pitches.

Address: 1/38 Green Street, Doveton VIC 3177
Phone: 03 9792 0622
Address: Unit 2, 1 Alex Fisher Drive, Burleigh Heads QLD 4220
Phone: 07 5593 7427
Email: info@grassports.com.au
Web: www.grassports.com.au



GREEN PLANET GRASS

WESTERN AUSTRALIA

Green Planet Grass design, construct and surface bowling greens (including conversion from grass to synthetic), cricket pitches, tennis courts, hockey fields, football and futsal fields, as well as commercial installations such as child care centres and schools.

Address: Unit 2, 21 Harris Road, Malaga WA 6090
Phone: 08 9209 2669
Email: tony@greenplanetgrass.com.au
Web: www.greenplanetgrass.com.au



Green Planet
GRASS



JORDIN SPORTS CONSTRUCTIONS

Jordin Sports Constructions is a Brisbane based tennis/netball/sports fields/ multi-purpose court construction company that has operated continuously in the Queensland and Northern New South Wales region for the last 40 years. We offer a total project service: • Demolition • Earthworks • Base Construction • Surface Installations • Fencing • Landscaping • Lighting • Sports Equipment. We are a preferred contractor with QLD Department of Education & Training and have performed many successful projects for them.

Address: 24 Bush Street, Windsor QLD 4030
Phone: 07 3857 5180 / 0408 453 585
Email: admin@jordinsport.com.au
Web: www.jordinsport.com.au



PRINCIPAL CONTRACTORS



KANGAROO COURTS

NATIONAL



Kangaroo Courts Australia has over 30 years' experience in the installation of "Hard Wearing Long Lasting Surface Systems" across Australia. Our company only installs all weather surface systems to courts, recreational and trafficable areas. Our complete service involves site inspection, consultation, design, surface preparation, installation and line marking. On areas indoor and out on new and aged concrete and asphalt surfaces. Kangaroo Courts Australia is committed to customer satisfaction and quality.

Address: PO Box 1326, Bathurst NSW 2795
Phone: 1300 426 878 / 0416 125 565
Email: admin@kangarocourts.com.au
Web: www.kangarocourts.com.au

KCL SPORTS

NEW SOUTH WALES



KCL Sports is a 100% Australian owned company providing expertise in the construction and installation of synthetic grass for all sporting and landscaping requirements since 1982. Construction of tennis courts, football and hockey fields and bowling greens. Installation of floodlighting systems.

Address: Box 2067 Gateshead Business Centre, Gateshead NSW 2290
Phone: 02 4944 9188 / 0414 685 519
Email: kclsport@kclsport.com.au
Web: www.kclsports.com.au

KEVIN McNAMARA & SON

VICTORIA



The art of building tennis courts, landscapes and swimming pools represents a life's work for Kevin McNamara. He formed his landscape design and construction business in 1968, later specialising in building tennis courts that form a part of the garden landscape, often incorporating features such as natural stone retaining walls and draw curtains as a substitute for fixed fencing. The company won many awards for their work. Kevin has been at the forefront of initiatives to raise industry standards, founding SAPIA and serving on Standards Australia panels for Sports Lighting and Synthetic Sports Surfacing.

Address: Unit 18, 75 Endeavour Way, Sunshine West VIC 3020
Phone: 03 9315 1123
Email: admin@courtsandpools.com.au
Web: www.courtsandpools.com.au

NT SHADE

NORTHERN TERRITORY



NT Shade offers a complete Playground Installation Package:

Shade structures
Rubber Softfall
Certified Softfall Sand and Synthetic Grass
Kompan Playground and Exercise Equipment
Softfall Testing and Playground Audits

Address: Shed's 1,2 & 4, 59 Reichardt Road, Winnellie NT 0820
Phone: Chris 0414738231 / Michelle 0403117332
Email: michelle@ntshade.com.au and chris@ntshade.com.au
Web: www.ntshade.com.au

PRINCIPAL CONTRACTORS

RECREATIONAL SURFACING

NEW SOUTH WALES



Recreational Surfacing has been active in the construction and surfacing of recreational areas for the past three decades. Our association with the manufacturers of our quality products has been long and fruitful. We fully support the companies manufacturing our products, they in turn support us with new innovations and keep abreast of the market lead. Our work has seen us construct or surface over 7000 tennis courts world wide along with basketball courts, netball courts, badminton courts, gymnasium floors, running tracks and all indoor or outdoor sporting venues.

Address: 653 Pacific Highway, Killara NSW 2071
Phone: 02 9499 2100 / 0412 229 528
Email: mortlock@alpha.net.au
Web: www.recsurf.com

RECREATIONAL TURF SURFACES

VICTORIA



Recreational Turf Surfaces are specialists in designing, constructing and installing both sand filled artificial grass courts and hard courts for a variety of sports and applications. We can consult with you on dimensions and provide estimates on costs. We can provide advice on fencing, lighting, accessories, retaining walls and overlay lines or goalposts for additional sports such as volleyball, netball, basketball or cricket.

Address: PO Box 1051, Caulfield North VIC 3161
Phone: 0414 311 592
Email: recturfsurfaces@optusnet.com.au
Web: www.recturf.com.au

RIVERINA SPORTING SERVICES

NEW SOUTH WALES



Riverina Sporting Services offer construction of all sporting surfaces; servicing of sporting surfaces including tennis, cricket, bowling, football; design and construction of football ovals.

Address: 2619 Culcairn-Holbrook Road, Culcairn NSW 2660
Phone: 0458 744 064
Email: tom@riverinasports.com.au
Web: www.riverinasports.com.au

S.M. CANTWELL POOLS & COURTS

VICTORIA



Cantwell Pools & Courts is a leader in the design and construction of inground swimming pools, spas and tennis courts. In our 20 years of operation, we've developed a reputation for producing the highest quality results on all projects, from modest backyard dreams to majestic landscape visions. Cantwell Pools & Courts has the expertise and professionalism to turn your individual vision into a reality.

Address: 254 Lower Plenty Road Rosanna Vic 3084
Phone: 03 9458 1902 / 0418 175 764
Email: info@cantwellpools.com.au
Web: www.cantwellpools.com.au

PRINCIPAL CONTRACTORS



SPORTS BUILD

NEW SOUTH WALES/QUEENSLAND/VICTORIA

Sports Build is a multi-disciplined, specialty sports construction business with experience and expertise in; Civil Construction, Project Management, Natural Turf & Synthetic playing surfaces for Bowls, Golf, Tennis and all types of Sports fields; Field lighting and amenity developments. Sports Build is proud to be the largest Supply Nation registered business operating in Sports & Recreation space, and one of 8 Companies within the JNC Group. The JNC Group of businesses are engaged with their communities across Australia and commits 10% of profits each year, to directly support a diversity of community projects.

SPORTS BUILD™



Address: 12 Wright Place, Armidale NSW 2350
Phone: 1800 447 744
Email: info@sportsbuild.com.au
Web: www.sportsbuild.com.au

SPORTS SURFACES

WESTERN AUSTRALIA

Construction and surfacing of acrylic and synthetic turf sports facilities, including tennis courts, bowling greens, hockey, soccer pitches, putting greens, driving ranges, long jump and running tracks. Authorised Plexipave installer. Fencing, equipment, laser levelling, maintenance and remediation, mine sits and remote areas.

Sports Surfaces

Address: Unit 3, 14 King Edward Road, Osborne Park WA 6017
Phone: 08 9244 2299 / 0468 610 608
Email: enquiries@sportssurfaces.com.au
Web: www.sportssurfaces.com.au



SPORTSZONE GROUP

NEW SOUTH WALES

Sportszone is a builder of sports fields; surfacing and maintenance including tennis, football, bowling greens, hockey fields, basketball and netball courts. Sportszone Group has been servicing Australia and the world for the last 15 years and have over 21 years' experience. Projects include Triathlon finishing track and hockey pitch, Sydney 2000 Olympics, hockey fields in Japan, football pitches and putting greens in Macau, prestige courts in Mauritius and tennis courts and cricket pitches throughout Australian Clubs and private homes, as well as a number of large areas for school playgrounds.



Address: Unit 5, 3-5 Flora Street, Kirrawee NSW 2232
Phone: 1300 302 398
Email: craig@sportszonegroup.com.au
Web: www.sportszonegroup.com.au



SPOT ON SYNTHETICS

VICTORIA

Spot On Synthetics is a Victorian based company and was formed in February of 2013. The staff at Spot On Synthetics are trained professionals installing soccer fields, hockey, tennis, cricket, multi-sport and domestic landscape synthetic systems worldwide. Our quality staff have over 30 years shared experience and have travelled Australia wide and internationally for their sought after expertise in Hockey, Tennis and Soccer fields specifically. Spot on Synthetics will meet the accreditations of all Sport Governing Bodies including FIH, FIFA, ITF and IRB.

Spot On Synthetics

Address: 9 Breenview Place, Doreen Vic 3754
Phone: 0447 886 005
Email: info@spotonsynthetics.com.au
Web: www.spotonsynthetics.com



PRINCIPAL CONTRACTORS



SURFACING AND PLAYGROUNDS

NORTHERN TERRITORY



SURFACING AND PLAYGROUNDS

Established in 2009, NT Sports & Playground Surfacing offers construction of playgrounds, tennis and basketball courts; softfall testing and playground auditing; sports equipment supply; and all types of synthetic surfacing/grass/rubber.

Address: PO Box 36186, Winnillie NT 0821
Phone: 08 8988 2088
Email: bob@ntsurfacing.com.au
Web: www.ntsyntheticsurfacing.com.au

SURFACING CONTRACTORS AUSTRALIA

SOUTH AUSTRALIA/QUEENSLAND



Surfacing Contractors Australia is involved in the construction and surfacing of synthetic grass and acrylic surfaces, including playgrounds, rubber softfall, running tracks, long jump run ups, indoor sports floors, sales and installation of sports and fitness equipment. Offices in both South Australia and Queensland.



Address: PO Box 76, Mitcham SC, Torrens Park, SA 5062
Phone: 1300 682 772 / 0448 488 024
Email: mark@surfcon.com.au
Web: www.surfcon.com.au

SYNTHETIC GRASS & RUBBER SURFACES AUSTRALIA

NEW SOUTH WALES



Synthetic Grass & Rubber Surfaces Australia are suppliers and installers of both synthetic grass and rubber wetpour surfaces for commercial, sporting and domestic surfaces, including tennis courts, cricket pitches, playgrounds, futsal pitches.



Address: 3 Tepko Road, Terrey Hills NSW 2084
Phone: 02 9986 1133
Email: mark@syntheticgrass.com.au
Web: www.syntheticgrass.com.au

SYNTHETIC SPORTS GROUP

NEW SOUTH WALES



Synthetic Sports Group is a family owned company specialising in the design, construction and installation of sporting surfaces, led by Hayden Garn with experience stretching over 20 years.

We offer full construction of all sports from domestic tennis courts to multisport school facilities to surfacing for commercial facilities such as bowling greens, tennis centres, futsal centres, football and hockey fields, basketball and netball courts and all synthetic sports surfaces. We also offer repair, resurfacing and conversion of existing sports facilities.

Address: 88 Georges River Road, Jannali NSW 2226
Phone: 0415 833 060
Email: hayden.garn@syntheticssportsgroup.com.au
Web: www.syntheticssportsgroup.com.au

SAPIA MEMBER DIRECTORY

PRINCIPAL CONTRACTORS



TEB CONTRACTORS

SOUTH AUSTRALIA

We are a company that specialise in all aspects of building and surfacing or resurfacing of all indoor and outdoor sporting courts and play areas including:

- Earthworks - Chainmesh Fencing - Lighting - Drainage- Surfacing
- Acrylic cushioned systems, Acrylic hard court, synthetic grass, sporting areas, playground rubber softfall

Address: 47 Conservatory Circuit, Oakden SA 5086
Phone: 0419 832 282 / 08 8345 1328
Email: enquiries@tebcontractors.com.au
Web: www.tebcontractors.com.au



TURF ONE

NATIONAL

Turf One covers all major sporting surfaces including synthetic, natural and hybrid playing fields, along with acrylic and synthetic courts and polyurethane athletics tracks. As a full service, engineering and project management led organisation, Turf One is uniquely positioned in the market to service clients across all aspects of their project from the initial stage of concept through design, construction, installation and maintenance.

Address: Unit 12, 89 Simcock Avenue, Spotswood Vic 3015
Phone: 03 9719 1900
Email: info@turfone.com.au
Web: www.turfone.com.au



WEST COAST SYNTHETIC SURFACES

WESTERN AUSTRALIA

West Coast Synthetic Surfaces specialise in acrylic surfacing of hard courts and synthetic turf surfacing of tennis courts, basketball courts, netball courts, cricket wickets or recreation/play areas. We are also fully experienced with full court construction, including coordination of earthworks, fencing, court furniture, lighting etc.

Address: 3/32 Attwell Street, Landsdale WA 6064
Phone: 08 9306 2725 / 0419 944 341
Email: westcoastss@bigpond.com
Web: www.westcoastsyn.com.au



SURFACING CONTRACTORS



BRUCE'S PLAYGROUNDS

AUSTRALIAN CAPITAL TERRITORY



Bruce's Playgrounds & Landscaping are landscape, rubber softfall and playground specialists. They provide friendly, creative and professional solutions for outdoor spaces, having designed solutions for domestic, commercial and government clients in Canberra for the last 20 years.

Address: 77 Heffernan Street, Mitchell ACT 2911
Phone: 02 6241 0446
Email: brucesbobcats@bigpond.com
Web: www.brucesplaygrounds.com.au

COURTMASTER SPORTS SURFACING

NEW SOUTH WALES



Courtmaster Sports Surfacing offers acrylic and synthetic grass tennis court surfacing as well as tennis court maintenance.

Address: Manly Grove Business Park
Unit A15, 1 Campbell Parade Manly Vale NSW 2093
Phone: 0403 662 667
Email: nicholas@courtmaster.com.au
Web: www.courtmaster.com.au

GRUNDY SYNTHETIC SURFACES

QUEENSLAND



Jason Grundy has been building sporting and recreational surfaces since 1992. He was previously an important part of a successful synthetic grass and rubber flooring business servicing the east Coast of Australia from Melbourne to Cairns. Recently Jason decided to embark on the journey of starting his own company. Grundy Synthetic Surfaces specialises in all types of safety flooring, including Synthetic Grass, Rubber, Timber, Adventure Walking Paths, Retainer Walls, Sand Pits, Digging Patches and shade solutions for both commercial and domestic applications.

Address: 50 Tomlinson Road, Caboolture Qld 4510
Phone: 1300 478 639
Email: info@grundysynthetic.com.au
Web: www.grundysynthetic.com.au

MATCHPOINT SYSTEMS

VICTORIA



Matchpoint Systems specialises in the installation of Rebound Ace, PlexiPave and Premier Court products. We have been installing acrylic and cushioned acrylics for 28 years, to private courts, clubs, associations and councils. We have installed courts for Hingis, Becker, Huber, Charlie Steeb, Melbourne Park, White City, Memorial Drive, the Federer Foundation, Davis Cup, Women's Masters etc. We also install indoor systems such as the Rebound Impact Cushioned System and cushioned running tracks.

Address: PO Box 698, Beaconsfield VIC 3807
Phone: 0418 392 223
Email: info@matchpointsystems.com.au
Web: www.matchpointsystems.com.au

SURFACING CONTRACTORS

NORM EAST SPORTS SURFACING

QUEENSLAND

We provide sports surfacing for the highest professional tournament facilities to entry-level domestic courts. Whatever the size, whether you are on a netball, basketball, tennis or multisport court, we deliver results you can count on every time. In addition to installation, we also resurface, rebuild, repair, and maintain all sports surfaces to a high level.

Address: 56 Cayenne Road, Caboolture QLD 4220
Phone: 07 5499 0558 / 0417 790 783
Email: neast@bigpond.com
Web: www.normeastsportsurfacing.com.au



PERTH PLAYGROUND & RUBBER

WESTERN AUSTRALIA

- Installation of Softfall Surfaces—Rubber / Sand / Mulch
- Playground Installation, repairs and maintenance
- Earthworks and minor landscaping

Address: 3 St Georges Avenue, Champion Lakes WA 6110
Phone: 0412 240 807
Email: mike@perthplaygroundandrubber.com.au
Web: www.perthplaygroundandrubber.com.au



PRO ONE SOFTFALL

QUEENSLAND

- Theme park and water park surfacing
- Playground surfacing and playground upgrades
- Rubber animals and shapes
- Surfacing repairs
- Sports surfacing
- Playground and surfacing compliance checks

Address: C1 & C2 239 Brisbane Road, Biggera Waters QLD 4214
Phone: 1800 033 406
Email: andrew@proone.com.au
Web: www.proone.com.au



RUBBER TOUGH INDUSTRIES

VICTORIA

Established in 1992, RubberTough Industries is recognised to be one of Australia's leading wet pour rubber surfacing companies. Our operations are continually growing and currently allow us to completely service Australia Wide. Not only do we do wet pour rubber. Our manufacturing facility specialises in the production of safety mats designed for swings and slide exits as well as rubber log edging used as borders for playgrounds, sandpits and many other associated rubber products including synthetic turf. Our on-going partnerships and networks allow us to access the products and services of companies specialising in synthetic grass, multi sports surfaces and shade sails allowing us to offer complete surfacing options.

Address: 10 Wills Street, Warragul VIC 3820
Phone: 03 5622 0693
Email: admin@rubbertough.com.au
Web: www.rubbertough.com.au



SURFACING CONTRACTORS

SPORTS COURTS VICTORIA

VICTORIA



All sports court requirements. Full construction, repairs, maintenance, pressure washing, resurfacing and linemarking of sports courts.

Address: 6/22 Apparel Close, Breakwater, Geelong VIC 3219

Phone: 03 5248 3126 / 0418 176 083

Email: jason@sportscourtsvictoria.com.au

Web: www.sportscourtsvictoria.com.au

SPORTZING COURT CARE

QUEENSLAND/NEW SOUTH WALES/VICTORIA

SPORTZiNG[®]



1800 818 894

Sportzing Court Care, established in 1994, specialise in synthetic grass tennis court resurfacing and maintenance. Sportzing is a family owned and operated company, operating for over 25 years. Attention to detail and customer care is our primary focus.

Address: 118 North Buderim Boulevard, Buderim QLD 4556

Phone: 0490 053 733 / 1800 818 894

Email: headoffice@sportzing.com.au

Web: www.sportzing.com.au

SYNTHATECH AUSTRALIA

NEW SOUTH WALES



Supply and installation of wet pour rubber, soft fall and synthetic grass for child care centres, schools, councils and multi-sport courts.

Ground works and base preparation.

Address: 6/13 Grieve Close, West Gosford NSW 2250

Phone: 0452 476 621 / 0422 040 043

Email: info@synthatech.com.au

Web: www.synthatechaustralia.com.au

TASMANIAN SPORTS SURFACES

TASMANIA



Construction, repair and maintenance of tournament facilities and domestic courts. 15 years' experience installing acrylic and cushioned acrylic courts and softfall playground surfaces, as well as asphalt surfacing.

Address: 39 Mulgrave Street, Perth TAS 7300

Phone: 0438 000 695

Email: rmpike79@gmail.com

ASSOCIATE CONTRACTORS

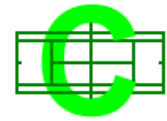


COURTCARE

VICTORIA

Courtcare cleans and repairs synthetic grass, red porous and acrylic surfaces, including removal and treatment of moss, algae and weeds, regular maintenance, court equipment, racquet restrings and tennis coaching. Doug Grant also takes groups on tennis treks throughout Victoria and as far afield as Nepal and Mount Everest (see www.tennistrekking.com)

Address: 4 Valley Parade, Glen Iris VIC 3146
Phone: 03 9809 4444
Email: info@courtcare.com.au
Web: www.courtcare.com.au



MPC FENCING

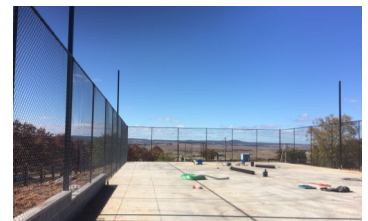
NEW SOUTH WALES

MPC Fencing specialises in the design, supply and installation of tennis courts and sporting enclosures, and all chain mesh fencing needs. With over 25 years of experience in the fencing industry, MPC Fencing has a history of working hand in hand with builders, their customers and clients.

Address: PO Box 499, Leichhardt NSW 2040
Phone: 0419 420 916
Email: mpcfence@gmail.com



MPC FENCING



PLAY-SAFE SERVICES

VICTORIA

Play-Safe Services for all indoor & outdoor play, sports, shade and safety needs, we manufacture sporting equipment, install and maintain playgrounds, shade sails, safety inspections, gymnastics equipment, fitness equipment, home multi sports courts and sporting equipment to suit your needs and budget.

Address: 1/56 Aster Avenue, Carrum Downs VIC 3201
Phone: 03 9775 0771
Email: info@play-safe.com.au
Web: www.play-safe.com.au



PRECISION SPORTS LIGHTING + ELECTRICAL

QUEENSLAND

Installation and maintenance of specialised lighting for sporting fields and public spaces. Design, construction and certification packages, conforming to Australian Standards.

Address: 24/1147 South Pine Road, Arana Hills Qld 4054
Phone: 1300 048 144
Email: info@precisionsports.com.au
Web: www.precisionsports.com.au

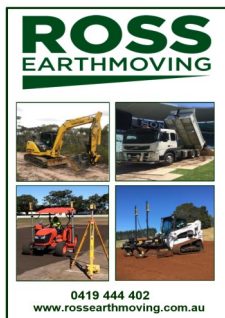


ASSOCIATE CONTRACTORS



ROSS EARTHMOVING

NEW SOUTH WALES



Ross Earthmoving specialise in dual grade laser levelling of courts and sporting fields' preparation. We install stabilised bases, bulk and detail earthworks, compaction and drainage, removal and importation of soil and materials.

Address: PO Box 157, Woollahra NSW 2025
Phone: 0419 444 402
Email: rossearthmoving@bigpond.com
Web: www.rossearthmoving.com.au

SPORTS CLEAN

NEW SOUTH WALES/ACT



SportsClean's core business is the maintenance of synthetic grass surfaces in both the commercial and domestic markets across Sydney, regional NSW and the ACT. It has the experience and capacity in personnel and equipment to maintain and repair wet, sand and rubber filled surfaces.

Address: Unit 9 / 9-11 Chaplin Drive, Lane Cove West NSW 2066
Phone: 9420 1200
Email: info@sportsclean.com.au
Web: www.sportsclean.com.au

SPORTS CONSTRUCTION GROUP

QUEENSLAND



Specialising in concrete surfaces and bases, tennis court fencing, brick/block retaining walls, laser guided screeding.

Address: 6 Kate Court, Murrumba Downs QLD 4503
Phone: 07 3491 9006
Email: david@sportsconstructiongroup.com.au
Web: www.sportsconstructiongroup.com.au

SPORTZING COURT CARE

QUEENSLAND/NEW SOUTH WALES/VICTORIA



Sportzing Court Care, established in 1994, specialise in synthetic grass and hard court tennis court cleaning and maintenance. Sportzing, a family owned and operated company, service tennis courts in Queensland, New South Wales and Victoria.

Address: 118 North Buderim Boulevard, Buderim QLD 4556
Phone: 1800 818 894 / 0490 053 733
Email: headoffice@sportzing.com.au
Web: www.sportzing.com.au

1800 818 894

THE FENCE CONSULTANT

VICTORIA

THE FENCE
CONSULTANT

Fencing materials, quotations and advice.
National Distributor of the "Post Collar Protector".

Address: Unit 2, 62-66 Lara Way, Campbellfield Vic 3061
Phone: 03 9357 8804 / 0433 388 444
Email: thefence@bigpond.net.au

MANUFACTURERS & SUPPLIERS



AFN SPORTS

AFN is one of the biggest manufacturers of sports equipment in South East Asia and also the OEM to various companies in the Europe and Australian market, with more than 25 years' experience in the industry. The philosophy of AFN Sports is to produce high quality aluminium sports and athletic products and accessories for the global market. AFN is certified by IAAF, German TUV & BWF. Today, AFN Sports has set its base in Malaysia to take advantage of the economic production costs and at the same time is in a better position to serve the emerging regional market in Asia and around the world.

Address: Lot 10998, Jalan Sungai Jati, 41000 Klang, Selangor, Malaysia

Phone: +603 3372 2008 +603 3382 1008

Email: sales@afnsports.com.my

Web: www.afnsports.com.my



NATIONAL

ALLSPORTS PRODUCTS

Allsports Products manufacture tennis nets and net posts and have patented a design for lockable safety net pots winders. Their winders are used exclusively by Tennis Australia for the Australian Open. The patented internal and external net posts winders are stainless steel with a fold away handle for safety, are fully guaranteed against faulty materials and workmanship. The external tennis net posts winders will suit standard type net posts, either round or square.

Address: PO Box 820, Tully QLD 4854

Phone: 0419 706 030

Email: sales@allsportsproducts.com.au

Web: www.allsportsproducts.com.au



NATIONAL

APT ASIA PACIFIC

APT Asia Pacific is a vertically integrated manufacturer of textile yarns, synthetic grass, coatings, and adhesives. The complete range includes artificial turf for any sporting or landscape application, as well as polyurethane-based coatings for athletics tracks, indoor gymnasium flooring applications, industrial flooring, roofing, and children's playground surfacing, as well as cushioned acrylic surfaces for court sport applications.

Address: Factory 3 Dunlopillo Drive, Dandenong South VIC 3175

Phone: 03 8792 8000

Email: enquiry@advpolytech.com.au

Web: www.aptasiapacific.com.au



NATIONAL

AUSTRALIAN SURFACING SUPPLIES

Supplier of high quality Playkote rubber to the Australian market. Our vast range of EPDM rubber, Precoat SBR rubber and associated products are sourced from leading manufacturers and are amongst the best available in the world, proven to withstand the harsh Australian climate and available in a wide range of vibrant colour options. Supplier of high quality synthetic grass, our UV protected turf will outlast harsh weather conditions. Australian agent for Playnetic, interactive outdoor play equipment. Portable Sports Flooring using interlocking tiles for quick drainage.

Address: 10 Wills Street, Warragul Vic 3820

1 River Street, Hindmarsh SA 5007

U6/149-151 North Road, Woodridge Qld 4114

Phone: 1300 PLAYKOTE

Email: sales@australiansurfacingsupplies.com.au

Web: www.australiansurfacingsupplies.com.au



NATIONAL

MANUFACTURERS & SUPPLIERS



CALIFORNIA SPORTS SURFACES

NATIONAL



California Sports Surfaces, a member of the ICP Group (USA), manufactures and markets leading acrylic and PU surface brands Plexipave, Rebound Ace, Decoturf and Premier Sports Coatings. Since 2007, Plexipave (Plexicushion Prestige) has been the Official Surface of the Australian Open, while from 1988–2006 Rebound Ace was the Grand Slam surface of choice. Since 1978 the US Open Tennis Championships have been played on Decoturf. CSS also specialises in court surface systems for indoor and outdoor Netball, Basketball, Multi-sport/Multi-purpose courts, cycle/pedestrian tracks, cricket wickets, portable courts and running tracks along with residential and commercial protective coating projects. CSS' applicators and builders are fully trained and accredited for the supply and installation of their products.

Address: 30-32 Assembly Drive, Tullamarine VIC 3043
Phone: 03 9338 9851
Email: sales-sports@icp-construction.com
Web: www.californiasportssurfaces.com.au

CHEMICAL TECHNOLOGY

NATIONAL



Established in 1991, Turf-Weld is a division of Chemical Technology, Australian owned manufacturer of adhesives, binders, coatings and sealants. Primarily known for our solvent based synthetic grass adhesive range, but we have developed a full range of products for the sports industry, including 1 part SMP adhesives, epoxy based moisture barriers and a range of products for smaller users and for rectification work.

Address: 80 Lipton Drive, Thomastown VIC 3074
Phone: 03 9462 3730
Email: gary@chemtech.com.au
Web: www.chemtech.com.au

COOL RUBBER

NATIONAL



Cool Rubber is rapidly becoming a leader in the import and distribution of rubberized playground safety surfacing. We source the best materials so our rubber play surfaces are clean, safe and made to last. Cool Rubber works tirelessly to ensure we adhere to Australian Standards and guidelines for safe public playgrounds. A thorough third-party, laboratory-testing program insures that all products meet the required standards and that quality levels are strictly maintained.

Address: Vallance Street, St Marys NSW 21760
Phone: 1300 671 168
Email: annie@coolrubber.com.au
Web: www.coolrubber.com.au

FIELDTURF AUSTRALIA

NATIONAL



AUSTRALIA

FieldTurf Australia, formerly Grassman, is a leading manufacturer of synthetic grass in Australia since the late 1970s. Specializing in cricket, tennis, multi-sport and landscape surfacing, FieldTurf Australia systems are proudly made in Australia. Whether its football, rugby, hockey or any other sport, FieldTurf fields provide athletes with the safety and performance they need to perform at their best, while giving field owners the durability they want to maximize the value of their investment. FieldTurf is a world leader in artificial turf with over 20,000 installations worldwide.

Address: 1A Hale Street, Botany NSW 2019
Phone: 02 9316 7244
Email: info@grassman.com.au
Web: www.fieldturf.com



MANUFACTURERS & SUPPLIERS



GRAND SLAM SPORTS EQUIPMENT

For over 25 years, Grand Slam Sports Equipment has manufactured and supplied quality sporting equipment such as indoor and outdoor basketball structures, volleyball, netball, badminton and tennis posts. We also supply a full range of AFL, rugby, soccer, futsal and handball goals which are available in both steel and aluminium. We manufacture sporting nets and draw curtains and provide a full installation service. See website for full product range.

Address: 19 Deakin Street, Brendale QLD 4500
Phone: 07 3205 3388
Email: sales@grand-slam.com.au
Web: www.grand-slam.com.au

NATIONAL



GREENPLAY

Greenplay Australia was established in 2005. We have many years' experience in the landscaping industry, and are the agent for Limonta Sport – an environmentally manufactured, lead free, soft synthetic grass surface that feels as good as it looks.

Address: Unit 2, 165 Morphett Road, North Pympton SA 5037
Phone: 1300 769 499
Email: as@greenplay.com.au
Web: www.greenplay.com.au

NATIONAL



HITECH SPORTS

HiTech Sports offers a comprehensive service, which includes the design, supply and installation of sporting equipment and surfaces to client specification. Our service provides sporting equipment for a large variety of sporting options, such as netball, tennis, basketball, volleyball, badminton, AFL, rugby union, rugby league, football, hockey and more. Our extensive product range covers all skill level requirements from basic through to top level competition with International Certification compliance.

Address: Unit 10, 49 Butterfield Street, Herston QLD 4006
Phone: 07 3168 2978
Email: tim@hitechsports.com.au
Web: www.hitechsports.com.au

NATIONAL



INDUSTRIAL ORGANICS

Industrial Organics is the Australian and New Zealand agent for Fairmont Ecolastic EPDM and Pre-Coloured Rubber Granules. Industrial Organics also supplies Polyurethane binders and various types of cushion rubber. We also provide flexibility and customisation from new colours through to tailoring supply and logistics.

Address: 7/12 Viewtech Place, Rowville VIC 3178
Phone: 03 9755 6066
Email: tim@indorganics.com
Web: www.indorganics.com

NATIONAL



MANUFACTURERS & SUPPLIERS

INNOVATION WITH ENERGY

NATIONAL



Innovation With Energy is an Australian owned and run business which offers a suite of products including the latest technology LED lighting, controllers and alternators. IWE specialise in LED floodlights, street lights and high bay lights. Our lights are built to the highest standards, adhering to the stringent IP66 criteria. From a home tennis court, sports oval, netball court, basketball court, soccer pitch, to a competitive level sports stadium.

Address: 19 Tepko Road, Terrey Hills NSW 2084
Phone: 02 9986 2396
Email: jamie.marchenko@iwegroup.com.au
Web: www.iwegroup.com.au

JASSTECH

NATIONAL



Jasstech provide lighting and media solutions for all sports fields, courts and arenas, no matter what the field of play, or the level of play.

Jasstech lighting products are designed in Australia and are now being sold extensively in Europe and the Americas.

Services include design, supply (including poles), installation and auditing.

Address: 141 Logan Road, Woollongabba QLD 4102
Phone: 1300 665 135
Email: enquiries@jasstech.com.au
Web: www.jasstech.com.au

KDF LTD

NATIONAL



KDF is one of the most dynamic and export-oriented Greek companies (currently activated in more than 45 countries in 4 continents), based in UAE and Greece, with production facilities and warehouses in both countries for acrylics and polyurethanes.

We are experts in sports/industrial/decorative flooring products and systems, with huge experience in Europe, the Middle East and India as well. We are now market leaders in the Gulf region for sports flooring. KDF, provides certified systems by ITF, IAAF, EU norms, LNE, LABOSPORT, ISASPORT, to name but a few.

Address: 1 Papanikolaou Ave, Thessaloniki 57010 Greece
Phone: +30 2310 829598
Email: exports@kdf.gr
Web: www.kdf.gr

KELMATT

NATIONAL



Kelmatt Australia have been manufacturing tennis court windscreens and sightscreens since 1983 and are considered market leaders in this field with many major installations throughout Australia, including Melbourne Park National Tennis Centre, Sydney International Tennis Centre Homebush, Kooyong Lawn Tennis Club Melbourne and the West Australian Tennis Centre at Burswood WA. Our tennis court windscreens greatly reduce the wind on court for better playing conditions. Privacy screens are used mainly around domestic courts for increased privacy and sightscreens for better ball sighting. Other products include Pole Padding for increased safety on Tennis and Netball Courts, Kindergartens and Football Grounds.

Address: 36 Jellico Drive, Scoresby VIC 3179
Phone: 03 9763 8522
Email: sales@kelmatt.com.au
Web: www.kelmatt.com.au

MANUFACTURERS & SUPPLIERS



MAPEI AUSTRALIA

Mapei is a world leader in the development, manufacture and supply of 'Sports Flooring' products/systems. The innovative 'Mapecoat TNS System' is specifically designed for installing and/or repairing indoor and outdoor Tennis and Multipurpose courts. Mapei manufacture over 1,500 products worldwide which includes adhesives, paints and finishes for the installation of all wall and floor coverings. The 'Sports Systems' product range are a household name when it comes to the installation of indoor/outdoor netball and basketball courts, multi-purpose areas, gyms, swimming pools, athletic tracks and synthetic turf.

Address: 180 Viking Drive, QLD 4076
Phone: 07 3276 5000
Email: n.cheal@mapei.com.au g.walsh@mapei.com.au

NATIONAL



OTTER FENCING

Otter Fencing specialise in chain-link fabric fencing and gates – supply only or supply and installation. We manufacture and install a wide range of sports fencing including tennis courts, multi-purpose sports fields, cricket net enclosures, baseball/softball batting cages, baseball and softball high screen back nets, ovals, hockey and soccer pitches. We also install chain-link fabric, tubular and welded mesh fencing and gates to suit a wide variety of industrial and commercial applications such as security, boundary, parks, schools, internal storage cages, safety, factories, gate automation.

Address: 12a Kitchen Road, Dandenong VIC 3175
Phone: 1300 856 833
Email: sales@otterfencing.com.au
Web: www.otterfencing.com.au

VICTORIA

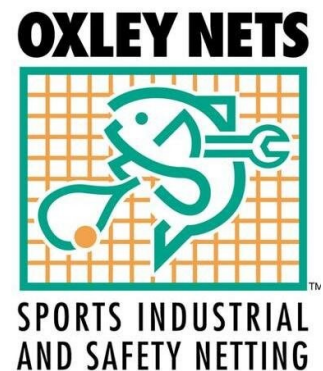


OXLEY NETS

With over 130 years experience in netmaking and design, our netting products and netting installations demonstrate our emphasis on strength, durability and quality. We provide tennis nets and other sporting nets, draw curtains and net posts. We are the supplier of tennis court nets for the Australian Open. Our behind-goal AFL football nets are used at stadiums like the MCG and ANZ Stadium. We manufacture high quality soccer goal nets. Countless councils and institutions have trusted us to create safe and functional sporting environments.

Address: 20 Network Drive, Port Melbourne VIC 3207
Phone: 1300 730 731
Email: info@oxleynets.com.au
Web: www.oxleynets.com.au

NATIONAL



PLAY HARD SPORTS EQUIPMENT

Play Hard Sports Equipment design and manufacture in-stadium, club level and home/recreational sporting equipment for tennis, basketball, rugby, AFL, athletics, soccer, futsal, hockey, badminton, cricket, netball and volleyball. PHS have supplied premium sports equipment for Sydney Olympic Park, Gold Coast Cbus Stadium, Queensland Tennis Centre, Gold Coast Super Sports Centre - Gold Coast Commonwealth Games premier training facility for Athletics, Hockey and Beach Volleyball - West Coast Eagles AFL elite training ovals and Western State Colorado University, USA.

Address: 24 Ern Harley Drive, Burleigh Heads QLD 4220 Australia
Phone: 07 5593 4494
Email: email@playhardsports.com.au
Web: www.playhardsports.com.au

NATIONAL



MANUFACTURERS & SUPPLIERS



PLAYSAFE FENCING

NEW SOUTH WALES

Playsafe Fencing
Safety, Security and Service pty Ltd



Playsafe Fencing manufactures and installs chain-wire fencing including tennis courts, baseball dugouts, cricket nets, golf screens, all purpose courts, sporting fields and sporting screens. We sell, install and hire fences and fencing materials across Sydney metropolitan area and the greater Sydney regional area. We have also installed major projects in other states of Australia.

Address: 24-26 Airds Road, Minto NSW 2566
Phone: 02 9820 1200
Email: info@playsafefencing.com.au
Web: www.playsafefencing.com.au

RAE-LINE

NATIONAL



The team at Rae-line design, manufacture and install commercial upholstery and sports padding solutions for the Australian and global markets. Wall, floor and object padding solutions for gymnastics, play areas, martial arts, general sports, trampoline and activity centres. From a single pole pad to entire gymnastics or activity venues. Trampoline padding, goal post padding, crash mats, landing mats, foam pits, coaching aids and much more. In addition, our testing facilities and systems allow the team to test sports padding applications to ensure that they are truly fit for purpose and align with the required specifications or regulations.

Address: 5/209 Liverpool Road, Kilysth VIC 3137
Phone: 03 9728 8300
Email: chrisc@rae-line.com.au
Web: www.rae-line.com.au

SMARTLUX

NATIONAL



Smartlux are suppliers of LED and HID lighting, and poles for all sports applications from court to stadium. We provide full turnkey of lighting design, including mast/pole selection. We are the APAC representative for Abacus Lighting Solutions—including base hinge masts, Challenger Luminaires, Orion Carpark Lights and Quartz vandal resistant LED bollards.

Address: 33 Perihelion Street, Coorparoo Qld 4151
Phone: 0450 747 337
Email: craig@smartlux.com.au
Web: www.smartlux.com.au

SPORTSCOMM

NATIONAL



At Sportscomm we offer a wide range of high quality sporting and commercial space finished flooring, elastic layers and protection tiles. We are Australasia's sole distributors of the SporTec® of rubber flooring surfaces. Our plants in Germany utilise the latest in manufacturing techniques and technologies, including best environmental practices. Locally we have strong relationships with all major contractors through EBA and non-EBA projects throughout Australia. Our range of commercial and sporting surfaces provide a variety of floor covering options manufactured from the latest raw materials and our in-house design team can assist with any custom colours, logos etc to make your facility stand out.

Address: 1/32 Harrington Street, Arundel QLD 4214
Phone: 1800 772 666
Email: admin@sports-comm.info
Web: www.sports-comm.info

SAPIA MEMBER DIRECTORY

MANUFACTURERS & SUPPLIERS



SPORTZING COURT CARE

QUEENSLAND/NEW SOUTH WALES/VICTORIA

Sportzing has been supplying tennis product and servicing Australian tennis courts for over 25 years. Our constant observation of tennis nets, tennis posts and winding units inspired us to design and manufacture many of our own products to ensure there is quality to last the distance and also competitively priced. Attention to detail and customer care is our primary focus.

Address: 118 North Buderim Boulevard, Buderim QLD 4556
Phone: 0490 053 733 / 1800 818 894
Email: headoffice@sportzing.com.au
Web: www.sportzing.com.au



SURFACE DESIGNS

NATIONAL

Surface Designs was founded in 2009, a wholesale company for the rubber safety surfacing industry. We are the exclusive importer of Rosehill Polymers rubber granule products for Australia and New Zealand. With Rosehill TPV® the soft fall surface is stable allowing an installation to last for up to ten years and the integrity of the granule allows the surface to stay supple. Rosehill TPV® is made from premium quality virgin polymers, combined with the highest possible UV stabilized pigments so as to retain its colour, even in our harsh Australian climate. Surface Designs also provide Polyurethane Binders to work with the granules.

Address: Unit 12, 1 Jubilee Avenue, Warriewood NSW 2102 Australia
Phone: 02 9986 2445
Email: sales@surfacedesigns.com.au
Web: www.surfacedesigns.com.au



TIGERTURF AUSTRALIA

NATIONAL

TigerTurf, a synthetic turf manufacturer for over 36 years, is one of the world's largest synthetic turf companies. Many of TigerTurf's products have been certified by world sporting bodies, including FIFA, World Rugby, FIH, ITF and World Bowls. As a successful synthetic turf manufacturer, TigerTurf has the experience and expertise to guide you in choosing the best turf for your unique requirements and challenges. TigerTurf is a subsidiary of TenCate Grass, a multi-national company and world market leader in the production of quality synthetic grass fibres and artificial turf components.

Address: 14 Latitude Boulevard, Thomastown VIC 3074
Phone: 03 9464 5052
Email: t.declase@tigerturf.com
Web: www.tigerturf.com



TROCELLEN

NATIONAL

Trocellen S.E.A Sdn. Bhd. manufacture and supply ProGame artificial turf SHOCK PAD for sport fields, playgrounds, landscape and gardening. ProGame shock pads fulfill the necessary safety requirements for sports or leisure areas and offer the best conditions for high performance training or leisure activities. ProGame contributes to easy and fast installation, stability of the field, constant characteristics across the whole installed area and strengthening the level of user safety and protection in the field. ProGame meet the requirements of international sports federations of football, hockey, baseball, rugby, golf and American football.

Address: Lot 2213, Batu 9, Kebun Baru, Jalan Kasawari, 42500 Telok Panglima Garang, Selangor Malaysia
Phone: +603 3122 1213
Email: sales@trocellen.com.my
Web: www.trocellen.com.my



TYRECYCLE

NATIONAL



Tyrecycle started in 1992 as a waste tyre division of a major tyre manufacturer. It soon expanded into a national tyre recycler for all types of tyres and today is part of the highly regarded integrated resource recovery group, ResourceCo. We're continually discovering new applications for scrap tyres in our quest to decrease the number of tyres entering waste streams and landfill. We manufacture and supply rubber granules, buffings and powders for use in: playground surfaces (both top and base/impact absorption layers); sporting surfaces, including athletics tracks, hockey, soccer and multi-purpose fields; infill for both synthetic and natural turf; equestrian surfaces, including arenas, walkers and round yards.

Address: Private Bag 48, Somerton VIC 3062 Australia
Phone: 03 8339 3555
Email: sales@tyrecycle.com.au
Web: www.tyrecycle.com.au

URBAN TURF SOLUTIONS

NATIONAL



There are many different synthetic sporting ranges on the market, but Urban Turf Solutions has the edge with its extensive experience in manufacturing, fitting and maintaining quality sporting surfaces. We have developed over 40 different surfaces suitable for all sports, all budgets and all environments. See our website for our extensive synthetic sporting surface range.

Address: 12 Hovey Road, Yatala QLD 4207 Australia
Phone: 07 3382 7260
Email: info@urbanturfsolutions.com.au
Web: www.urbanturfsolutions.com.au

PROFESSIONAL SERVICES



ACOUSTO-SCAN

NATIONAL



Acousto-Scan Pty Ltd is an ISO/IEC 17205 Laboratory that specialises in testing sporting and playground surfaces. Their accreditations include NATA (National Association of Testing Authorities, Australia), FIFA (Federation Internationale de Football Association), WR (World Rugby Board), AFL (Australian Football League), CA (Cricket Australia), ITF (International Tennis Federation), FIH (International Hockey Federation). They are an ISSS Scientific Body Member. Acousto-Scan has been directly involved with the Olympics, Commonwealth Games, Asian Games, Pacific Games, FIFA gold projects and World Cups.

Address: 44/59 Halstead Street, South Hurstville NSW 2221
Phone: 02 8385 4872
Email: admin@acoustoscan.com.au
Web: www.acoustoscan.com.au

DALTON CONSULTING ENGINEERS

NATIONAL



Dalton Consulting Engineers are experts in the design and project management of sporting projects and related infrastructure. DCE prides itself on combining the engineering and financial imperatives for sports facilities with the necessary infrastructure requirements. Drawing on extensive knowledge and experience in the delivery of sporting projects, DCE provides expert services and advice in the following key areas: master planning, 3d animations for concept design, synthetic and turf sports fields, athletic tracks, thoroughbred racing facilities, water saving initiatives, integrated water cycle management, detailed design, project management, construction management.

Address: Level 3, 678 Victoria Street, Richmond VIC 3121
Phone: 03 9813 7400
Email: info@dceng.com.au
Web: www.dceng.com.au

DART MARKETING

NATIONAL



As one of Australia's leading Key Person of Influence on Brand and Marketing strategies on LinkedIn. Steve has an outstanding record in the positioning and management of successful brands, including Red Bull Energy Drink and Morrison Media Publishing House clients, as well as Play Hard Sports Equipment. Steve has recently started on his own solo entrepreneur journey with Dart Marketing Pty Ltd – a sales, marketing and brand strategy consultancy business.

Address: 16 Moorea Court, Pacific Pines Qld 4211
Phone: 0405 245 973
Email: steve@dartmarketing.com.au

LABOSPORT AUSTRALASIA

NATIONAL



Labosport provides independent accredited performance testing for all leading sports organisations, including FIFA, WR, FIH, IAAF, AFL, World Bowls and ITF. We also provide independent research, consultancy and design on sports surfaces—synthetic, hybrid and natural turf.

Address: 52 Raby Esplanade, Ormiston Qld 4160
Phone: 0406 558 120
Email: keith.mcauliffe@labosport.com
Web: www.labosport.com

PROFESSIONAL SERVICES



SMART CONNECTION CONSULTANCY

NATIONAL

Martin Sheppard, Managing Director of Smart Connection Consultancy, has worked since 2008 supporting clients with feasibility studies, business cases and the procurement of synthetic sports surfaces, so that the technology can grow participation in active recreation and community sport. Recognised as one of Australia's leading thinkers and influencers on the use of synthetic surface technology, he is also the technical adviser to the FFA, NRL and Rugby Australia on synthetic surfaces, in addition to working directly with FIFA, World Rugby and FIH.



Address: AAMI Park, 60 Olympic Boulevard, Melbourne VIC 3001
Phone: 03 9421 0133
Email: martins@smartconnection.net.au
Web: www.smartconnection.net.au

SOFTFALL TESTING NT

NORTHERN TERRITORY

Softfall Testing NT provides softfall testing and playground auditing, as well as assistance in playground design.

Address: 420 Virginia Road, Virginia NT 0834
Phone: 0408 139 362
Email: admin@softfalltesting.com.au
Web: www.softfalltesting.com.au



AFFILIATE MEMBERS

AMERICAN SPORTS BUILDERS ASSOCIATION (ASBA)

U.S.A.



ASBA is a national organization for builders, designers and suppliers of materials for tennis courts, running tracks, natural and synthetic turf fields, indoor and outdoor synthetic sports surfaces. It is recognized as a centralized source for technical and consumer-oriented information.

Address: 9 Newport Drive, Suite 200, Forest Hill, MD 21050
United States of America
Phone: (USA) 410-730-9595
Email: info@sportsbuilders.org
Web: www.sportsbuilders.org

AUSTRALIAN LEISURE MANAGEMENT (ALM)

NATIONAL



Australasian Leisure Management magazine is SAPIA's 'Official Publication', with all SAPIA members receiving a copy of the printed magazine (mailed six times a year) as a membership benefit. SAPIA members can also receive the bi-weekly ALM e-newsletter with the latest news from across the industry by signing up at www.ausleisure.com.au/newsletter/. Australasian Leisure Management is a business magazine aimed at those who work and manage in all areas of the leisure industry, with sport, venues, play, surfaces and safety key areas of coverage. It invites news and content from SAPIA members for both the magazine and website.

Address: PO Box 478, Collaroy NSW 2097
Phone: 02 9970 8322
Email: leisure@ausleisure.com.au
Web: www.ausleisure.com.au

AUSTRALIAN SPORTS FOUNDATION (ASF)

NATIONAL



The Australian Sports Foundation helps clubs and organisations as well as individual athletes to fundraise for sport. Fundraising4Sport (F4S) is the main fundraising program whereby each project is set up with its very own personalised project page and secure donation platform which can be shared with communities to raise awareness. The ASF is uniquely positioned to enable philanthropic support to Australian sport by providing tax deductibility for donations made to projects signed up. This means that donations of \$2 or more made through the Australian Sports Foundation allow donors to claim a tax deduction.

Address: Leverrier Street, Bruce ACT 2617
Phone: 02 6214 7868
Email: ryan.holloway@asf.org.au
Web: www.asf.org.au

SPORTS AND PLAY CONSTRUCTION ASSOCIATION (SAPCA)

U.K.



The Sports and Play Construction Association (SAPCA) is the recognised trade association for the sports and play construction industry in the United Kingdom. Its role is to foster excellence, professionalism and continuous improvement throughout the industry in order to provide the high quality facilities needed at all levels of sport, physical activity and play. SAPCA membership signifies professional competence and performance which directly benefits customers that choose member companies for their projects.

Address: The Hexangle, Stoneleigh Park, Warwickshire UK CV8 2LG
United Kingdom
Phone: (UK) +44 24 7641 6316
Email: chris@sapca.org.uk
Web: www.sapca.org.uk

AFFILIATE MEMBERS



SYNTHETIC TURF COUNCIL

INTERNATIONAL

Founded in 2003, The Synthetic Turf Council is a non-profit trade association for the synthetic turf industry. The STC's vision is to improve the world through synthetic turf by serving as the global forum to promote, develop, grow and advocate for the synthetic turf industry. STC serves as a trusted source and advisor to the industry through a collective and unified voice. The STC ensures industry excellence through guidelines, certification and education and networking. STC promotes industry growth through targeted outreach and recognition.



Address: 9 Newport Drive, Suite 200, Forest Hill, Maryland 21050 USA
Phone: (USA) +1 443-640-1067
Email: dan@syntheticturfcouncil.org
Web: www.syntheticturfcouncil.org

HONORARY MEMBERS



J.T. DAVIES

NEW SOUTH WALES

Jack Davies, a Sydney-based consultant structural engineer, has specialised in tennis court and sports field design and construction for over 40 years. Jack was a good tennis player, squash player and cricketer in his own right, and was a consultant to Tennis NSW for many years.

DR DAVID EAGER

NEW SOUTH WALES

Professor Eager represents Australia on ISO/TC 83 Sports and Recreational Equipment. He is an invited technical observer on the European Union Technical Committee CEN/TC 136/SC 1 Children's Playground Equipment and Surfacing. David's primary research is in the area of injury prevention by applying risk engineering and technological interventions to eliminate mortalities and reduce the likelihood and severity of injuries. He is also involved in the human factors research within the UTS Research Centre for Intelligent Mechatronic Systems that is conducting research into the physiological and psychological aspects of human-machine and human-environment interaction. David is currently investigating improved techniques and parameters for the measurement of material properties for attenuating surfacing within children's play spaces with a view to reducing the severity and frequency of injuries associated with falls. He is also conducting research into the characterization of trampoline performance.

GEORGE APTED

VICTORIA

George Apted is a Melbourne-based consulting engineer who has provided Association members with many years of engineering advice, particularly with updates to the Sports Contractors Association's Guide Specifications for Tennis Court Construction.

MAURICE PHILP

QUEENSLAND

Maurice Philp, formerly President of Tennis Queensland from 1998-2004, is a retired Specialist Consulting Civil Engineer who assisted a variety of private, semi-government and government clients on a wide range of projects from small residential estates to multi-story commercial buildings and industrial and mine developments. Throughout his career, Maurice provided advice on matters covering the complete range of geotechnical engineering from investigation and design stages of projects through construction to performance evaluation during project life. Maurice has been acknowledged by Tennis Queensland as the instigator of much change and was credited with being primarily responsible for developing and delivering professional governance within that organisation. He was a member of the Technical Services Advisory Group that published the first edition of Tennis Queensland's Technical Manual for the Design, Construction and Maintenance of Tennis Facilities. It was Maurice's love of tennis that created his solid connection to the game, the tennis fraternity and to our mutual cause which champions good court construction processes.

SPORTS & PLAY

INDUSTRY ASSOCIATION LIMITED



For membership or general enquiries, contact the SAPIA office.

SPORTS AND PLAY INDUSTRY ASSOCIATION LTD

ABN 40 092 172 275

ADDRESS: PO BOX 118, MONA VALE NSW 1660 AUSTRALIA

PHONE: 1800 208 202 (AU) PHONE: 0800 208 202 (NZ)

EMAIL: office@sapia.org.au WEB: www.sapia.org.au



