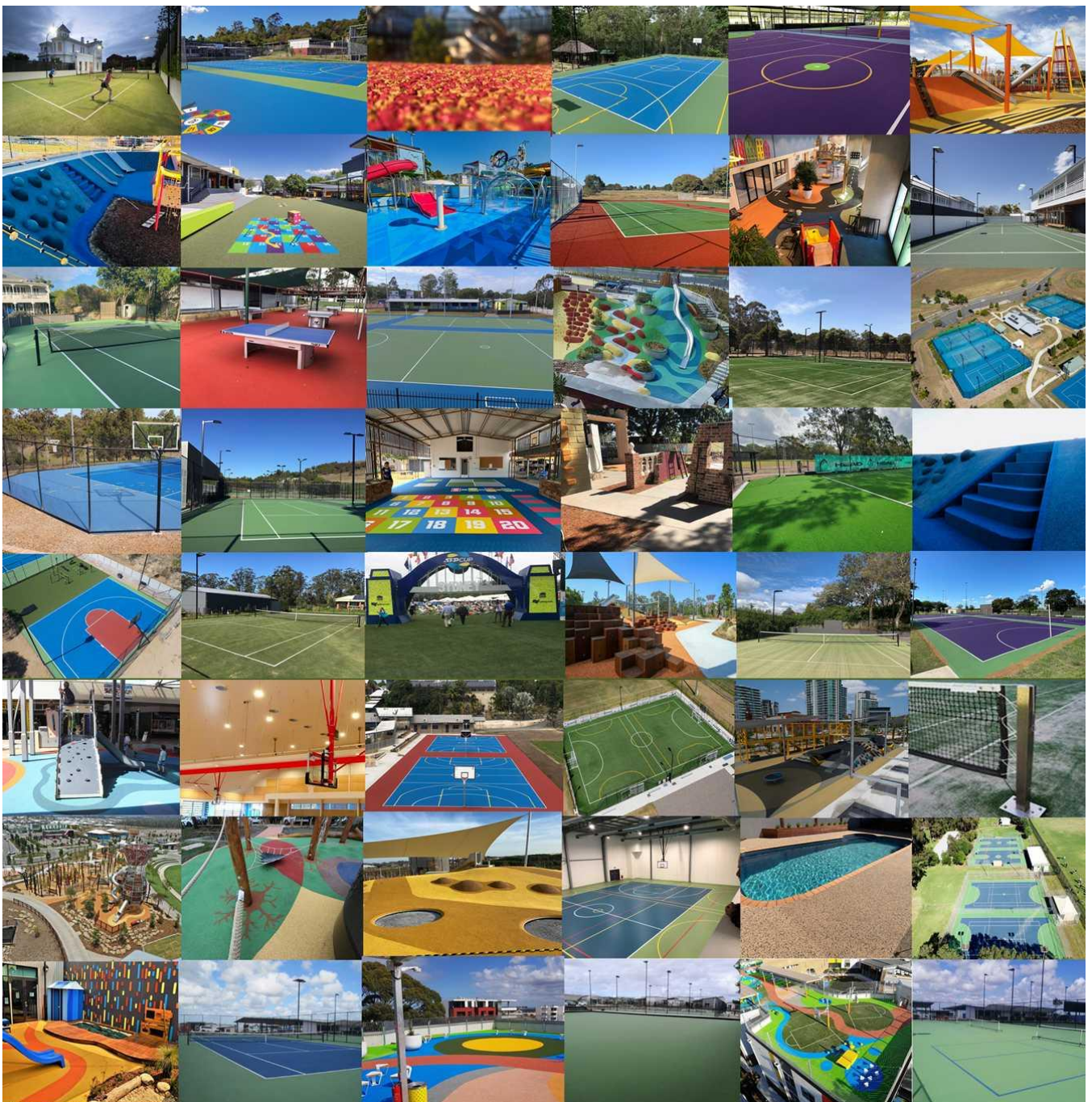


SPORTS & PLAY

INDUSTRY ASSOCIATION LIMITED

INDUSTRY AWARDS

2021



The purpose of the Sports & Play Industry Association's annual Industry Awards program is to support the association's goal of promoting excellence in all aspects of sports, play and recreation construction and installation, from the design phase through to completion. The program recognises the work of its members who are participating in achieving this goal, and provides members with the opportunity to promote and celebrate their work.

This year's Industry Awards competition opens on 1 April 2021 and closes on 30 June 2021. Independent judges will then evaluate the entries. Winners will be announced and trophies presented in September 2021 – hopefully at our annual National Conference, COVID willing.

We encourage all SAPIA members to nominate their projects, products or services for the Industry Awards competition. Join in the fun while showcasing your work – we love to see what our members have been creating around the country.

The following Awards categories were chosen to enable manufacturers, suppliers and service members, as well as builders, surfacers, installers and other contractors, large or small, to enter their work for recognition.

2021 AWARD CATEGORIES

SPORTS AWARDS

- S1. Construction – Commercial Sports Court/s – any surface
- S2. Construction – Domestic Sports Court/s – Synthetic Grass
- S3. Construction – Domestic Sports Court/s– Acrylic
- S4. Construction – Sports Field/s
- S5. Construction – Other Sports Facilities
- S6. Surfacing – Commercial Sports Court/s – any surface
- S7. Surfacing – Domestic Sports Court/s – Synthetic Grass
- S8. Surfacing – Domestic Sports Court/s – Acrylic
- S9. Surfacing – Sports Field/s
- S10. Surfacing – Indoor Sports Facilities
- S11. Surfacing – Other Sports Facilities
- S12. Sports Equipment Installations
- S13. Sports Lighting Installations

PLAY AWARDS

- P1. Surfacing – Regional Play Space
- P2. Surfacing – Council/School Play Space
- P3. Surfacing – Childcare/Early Learning Centre/Preschool Play Space
- P4. Surfacing – Commercial Facility Play Space
- P5. Play Equipment Installations

LANDSCAPE AWARD

- L1. Surfacing – Non-Sport, Non-Play

INNOVATION AWARD

- I1. Innovation Award – Product or Service

DESIGN AWARD

- D1. Design Award – Sports or Play Facility

EVALUATION

Depending on the category, evaluation criteria may include the following:

- layout/design
- site work/drainage
- base construction, surface adequacy and aesthetics
- floodlighting if applicable
- fencing if applicable, and
- overall impression of the finished project.

Independent judges are appointed to the task of assessing the projects. Details identifying the entrants and project locations are removed to ensure entries are judged on their merits. Scores are awarded according to SAPIA's evaluation criteria, and the project scoring the highest number of points is adjudged the winner of that category. In some categories, runners up may also be awarded.

RULES

- Any financial member of the Sports & Play Industry Association is eligible to enter.
- Projects submitted must have been completed within the last 3 years as at 30 June 2021, and must not previously have won a SAPIA Industry Award.
- Members may enter as many projects as they wish. One Project Entry Form is required for each project entered. Attach or enclose plans/drawings if applicable, as well as photographs to assist the judging process. Before, during and after photos can be helpful, if available.
- The entrant must be the owner of the photographs, information and drawings submitted with the entry, and by entering this Award competition authorises the Sports & Play Industry Association to release any of these materials, to reproduce them in publications, on the SAPIA website, in news releases and other advertising materials, including those not pertaining to the Awards program, without compensation.
- The judges' decision is final.
- The administration fee for each entry is \$125.00. Payment may be made by cheque or bank transfer. Cheques should be mailed to: Sports And Play Industry Association Limited, PO Box 118, Mona Vale NSW 1660. SAPIA's bank account is: BSB 013 457; Account No. 4406 74957.

Submitting entries:

- Entries on USB drives or as hard copy should be mailed to:
SAPIA Secretary, PO Box 118 Mona Vale NSW 1660 Australia.
- Entries can be submitted by Email, Dropbox, Google Drive or WeTransfer or similar to:
office@sapia.org.au

The closing date for entries in our 2021 competition is **30 June 2021**. Entries received after this date will be excluded from the judging for this year.

THANKS FOR PARTICIPATING & GOOD LUCK