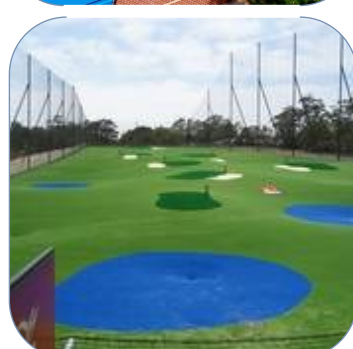
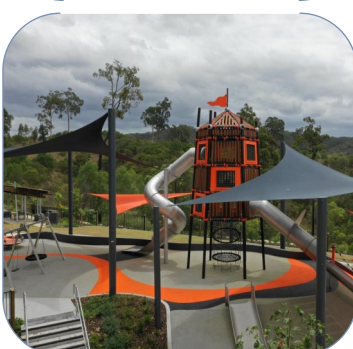


SPORTS & PLAY

INDUSTRY ASSOCIATION LIMITED

MEMBER DIRECTORY

NOVEMBER 2021



THE PEAK INDUSTRY BODY FOR
SPORTS, PLAY & RECREATION CONSTRUCTION IN AUSTRALASIA
Builders & Installers — Manufacturers & Suppliers — Professional Services
www.sapia.org.au

OUR AIMS & OBJECTIVES

As the recognised Australasian peak body, the Sports & Play Industry Association fosters excellence, professionalism and continuous improvement throughout the sports, recreation and playground construction industry, in order to provide the high quality facilities necessary for the success and safety of sports and play in Australasia.

Customers and decision-makers can partner with SAPIA in upholding the highest quality standards by ensuring that the contractors with whom they engage are SAPIA Members. This edition of our Member Directory has been published in January 2021. The publication is updated throughout the year and the most recent edition can be viewed by visiting our website www.sapia.org.au

SAPIA'S AIMS AND OBJECTIVES

- To promote high standards of design, construction and workmanship for sports and play facilities in Australasia.
- To regulate the industry through the vetting and monitoring of SAPIA members.
- To provide and support training and education for the industry's workforce.
- To participate fully in the development of Australian and other Standards for the construction and safe performance of sports, play and recreational facilities, for all levels of ability.
- To publish Codes of Practice relevant to the sports and playground construction industry which may be used as a reference for specifiers and a tool for members.
- To liaise closely with governing bodies for individual sports, as well as play and recreation organisations, both nationally and internationally.
- To encourage the use of new technology and innovation in the design, construction and recycling of sports and play facilities.
- To provide a strong voice for the sports and play construction industry in Australasia.

The SAPIA website is a source of valuable information for anyone involved in the development of sports and play facilities. Visit www.sapia.org.au for Technical Guidance, Exhibitions & Events, Industry Awards winners, our searchable Membership Database and more. Follow our Facebook and LinkedIn pages to view members' projects.

FURTHER INFORMATION

The Sports and Play Industry Association operates through its own full-time administration. For further information, including technical advice, recommended contractors or suppliers for your projects, or to enquire about becoming a SAPIA member, please contact us:

Sports and Play Industry Association
PO Box 118, Mona Vale NSW 1660
Australia
Telephone: 1800 208 202 (freecall AUSTRALIA)
Telephone: 0800 208 202 (freecall NEW ZEALAND)
E-mail: office@sapia.org.au
Web: www.sapia.org.au

OUR HISTORY



SPORTS
contractors association limited

**SPORTS
& PLAY** MEMBER
INDUSTRY ASSOCIATION LIMITED

The **SPORTS & PLAY INDUSTRY ASSOCIATION (SAPIA)** is the peak industry body for sports, play and recreation construction in Australasia. Our members are specialists in the areas of design, construction, installation, maintenance, manufacture, supply and testing of sports and play spaces, both domestic and commercial.

SAPIA is a not-for-profit association, established to promote the best construction standards and business practices for the benefit of both members and their customers, as well as to contribute to the safe sporting pleasure of participants who use facilities constructed and/or serviced by members of SAPIA. Our Board of Directors is made up of individuals who are leaders in their fields, who volunteer their services for the benefit of the association and the industry as a whole.

Formed in 2000, we were initially known as the Tennis Court & Sports Field Builders Association of Australasia. We changed our name to the Sports Contractors Association in 2004 as our membership expanded to encompass not only builders but also sports equipment suppliers and professional consultants. In 2016, with the further broadening of our membership to include specialist playground contractors and suppliers, the association rebranded as the Sports and Play Industry Association.

At the time of printing (January 2021) SAPIA has 110 members: builders, sub-contractors, manufacturers, suppliers and professional consultants. Our contractor members have expertise in building and surfacing all types of sports and recreation areas, including tennis and multi-sport courts, basketball and netball courts, pickleball and squash courts, bowling greens, golf courses, hockey fields, athletic tracks, equestrian arenas, soccer and futsal fields, cricket pitches and nets, baseball fields, rugby and AFL fields, fitness areas and playgrounds, skateboard parks and velodromes. Other members manufacture, supply and install sports flood lighting, fencing, all types of nets, net and goal posts, basketball towers, safety padding, shade structures and shade sails, synthetic grass and acrylic surfacing materials, playground soft fall as well as ancillary products. Consultants provide professional and technical services, including design, engineering, advice and testing to Australian and international standards.

SAPIA members must comply with strict membership criteria and abide by the Association's Code of Ethics and Constitution. They are kept up to date with the latest advances in sporting surfaces, construction and installation techniques and equipment technology. SAPIA is represented on Standards Committees in sports and playground surfacing and equipment, lighting and fencing.

The following pages contain profiles and contact details provided by each of our members, current at time of printing. This Directory is updated online throughout the year as new members join, so please visit the SAPIA website www.sapia.org.au for up-to-date membership listings.

SAPIA's membership categories include:

- **Principal Contractors**, who are experienced in the full construction of sports courts, sports fields, playspaces or recreational areas, have been so occupied in their main business activities for the two years preceding the date of application for membership and demonstrate standards and value acceptable to the Board.
- **Surfacing Contractors** who specialise in surfacing-only services to principal contractor members or other sports and recreation contractors.
- **Associate Contractors** who are suppliers of associated goods and services (e.g. fencing installers, earthworks contractors, concreters and block layers, maintenance personnel) to the sports, play and recreation contracting industry.
- **Professional Services** members include professional consultants, engineers, architects and testing labs etc. who specialise in the sports, play and recreation industry.
- **Manufacturers & Suppliers** of products related to the sports, playground and recreation industry, including but not limited to sports and play equipment, synthetic turf, acrylic surfacing, fencing materials, quarry materials, sports lighting, safety padding etc.
- **Affiliate Members** such as sports governing bodies, reciprocal peak bodies, fund-raisers and honorary members involved with the sports, play and recreation construction industry.

For project advice or quotations, you may choose to communicate directly with the SAPIA members listed on the following pages, or else contact the SAPIA Office by emailing office@sapia.org.au or by phoning **1800 208 202** (Australia) or **0800 208 202** (New Zealand).

PRINCIPAL CONTRACTORS DIVISION

QUEENSLAND

All Sport Projects • Bioscapes Group • Centre Court Constructions • Champion Grass by Premier Grass
Court Craft • Custom Court Constructions • Dynamic Sports Facilities • Grassports Queensland
Jordin Sports Constructions • Premier Sports & Leisure • Sports Build • Sports Construction Group
Surfacing Contractors Australia

NEW SOUTH WALES

All Grass Sports Surfaces • Champion Grass by Premier Grass • Champion Sports Grounds • Court Craft
Dynamic Sports Facilities • Glooloo Surfacing • Kangaroo Courts • KCL Sports
Premier Sports & Leisure • Recreational Surfacing • Riverina Sporting Services • Sports Build
Sportszone Group • Synthetic Grass & Rubber Surfaces • Synthetic Sports Group

VICTORIA

A.S. Lodge • All Seasons Synthetic Turf • Bioscapes Group • Budget Tennis Courts
Champion Grass by Premier Grass • Grassports Australia • Kevin McNamara & Son
Recreational Turf Surfaces • Scratchin The Surface • SJM Turf & Civil • SM Cantwell Pools & Courts
Spot On Synthetics • Turf One

TASMANIA

Blacktac

SOUTH AUSTRALIA

Boag Construction • Greenplay Australia • Sports Build • Surfacing Contractors Australia

WESTERN AUSTRALIA

All Seasons Synthetic Turf • Astro Synthetic Surfaces • Evergreen Synthetic Grass
Green Planet Grass • Sports Surfaces • West Coast Sporting Surfaces

NORTHERN TERRITORY

NT Shade • Surfacing & Playgrounds

SURFACING CONTRACTORS DIVISION

QUEENSLAND

Grundy Synthetic Surfaces • ProOne Softfall • Sportzing Court Care Services

NEW SOUTH WALES/A.C.T.

Bruce's Playgrounds • Courtmaster Sports Surfacing • Grass Rubber Play • Malcolm Kessell
Synthatech Australia

VICTORIA

B&T Pool Painting & Court Surfacing • Matchpoint Systems • RubberTough Industries • Sports Courts Victoria

WESTERN AUSTRALIA

Perth Playground & Rubber • Retech Rubber

ASSOCIATE CONTRACTORS DIVISION

C&EA Scope • Courtcare • Genesis Concreting • MPC Fencing • Play-safe Services
Precision Sports Lighting + Electrical • Sports Clean
Sportzing Court Care Services • The Fence Consultant

MANUFACTURERS & SUPPLIERS DIVISION

AFN Sports • Allsports Products • APT Asia Pacific • Australian Surfacing Supplies
California Sports Surfaces • CombiTile • Cool Rubber • Era Polymers • FieldTurf Australia
Grand Slam Sports Equipment • Halliday Lighting Australia • HiTech Sports • Industrial Organics
Innovation With Energy • Jasstech • KDF Ltd • Kelmatt Australia • Mapei Australia • Otter Fencing • Oxley Nets
Pacific Urethanes • Play Hard Sports Equipment • Playsafe Fencing • Smartlux • Sportzing Court Care Services •
Surface Designs • TigerTurf Australia • Trocellen S.E.A • Tyrecycle • Urban Turf Solutions

PROFESSIONAL SERVICES DIVISION

106 Architects • Acousto-scan • Dalton Consulting Engineers • iDwala • Labosport • PeakUrban • Playtest
Smart Connection Consultancy • SportEng

AFFILIATE MEMBERS

American Sports Builders Association (ASBA) • Australasian Wire Industry Association
Australian Leisure Management • Australian Sports Foundation • Sports & Play Construction Association
Synthetic Turf Council • Tennis Queensland-Court Tech
J.T. Davies (honorary) • Dr David Eager (honorary) • George Apted (honorary) • Maurice Philp (honorary)

SPORTS COURTS

All Grass Sports Surfaces • All Sport Projects • A.S. Lodge • B&T Pool Painting & Court Surfacing
Blacktac • Bioscapes Group • Boag Construction • Budget Tennis Courts • Centre Court Constructions
Champion Sports Grounds • Court Craft • Courtmaster Sports Surfacing • Custom Court Constructions
Dynamic Sports Facilities • Grassports Australia • Grassports Queensland • Grass Rubber Play
Greenplay Australia • Grundy Synthetic Surfaces • Jordin Sports Constructions • Kangaroo Courts
Kevin McNamara & Son • Malcolm Kessell • Matchpoint Systems • Premier Sports & Leisure
Recreational Surfacing • Recreational Turf Surfaces • Riverina Sporting Services • Scratchin The Surface
SM Cantwell Pools & Courts • Sports Build • Sports Construction Group • Sports Courts Victoria • Sports Surfaces
Sportszone Group • Spot On Synthetics • Surfacing & Playgrounds • Surfacing Contractors Australia • Synthetic
Grass & Rubber Surfaces • Synthetic Sports Group • TigerTurf Australia • Turf One
West Coast Sporting Surfaces

SPORTS FIELDS

All Grass Sports Surfaces • Bioscapes Group • Champion Grass by Premier Grass • Champion Sports Grounds
Grassports Australia • Grassports Queensland • Greenplay Australia • SJM Turf & Civil • Sportszone Group
Spot On Synthetics • Synthetic Grass & Rubber Surfaces • Synthetic Sports Group • TigerTurf Australia • Turf One

BOWLING GREENS

Bioscapes Group • Custom Court Constructions • KCL Sports • Sports Build • Sportszone Group
Synthetic Sports Group • TigerTurf Australia

PLAY SPACES

All Grass Sports Surfaces • Astro Synthetic Surfaces • Bruce's Playgrounds • Glooloo Surfacing
Grass Rubber Play • NT Shade • Surfacing & Playgrounds • Perth Playground & Rubber • Play-safe Services
ProOne Softfall • Retech Rubber • RubberTough Industries • Surfacing Contractors Australia
Synthatech Australia • Synthetic Grass & Rubber Surfaces • TigerTurf Australia

SYNTHETIC GRASS LANDSCAPING

All Grass Sports Surfaces • All Seasons Synthetic Turf • All Sports Projects • Astro Synthetic Surfaces • Bruce's
Playgrounds • Custom Court Constructions • Champion Sports Grounds • Evergreen Synthetic Grass • Glooloo
Surfacing • Grass Rubber Play • Green Planet Grass • Synthetic Grass & Rubber Surfaces
Scratchin The Surface • Synthetic Sports Group • TigerTurf Australia

FENCING CONTRACTORS

All Sport Projects • MPC Fencing • Otter Fencing • Playsafe Fencing • Scratchin The Surface
The Fence Consultant

LIGHTING CONTRACTORS

C&EA Scope • Precision Sports Lighting + Electrical • Halliday Lighting Australia • Innovation With Energy
Jasstech • Smartlux

SPORTS & PLAY EQUIPMENT SUPPLY

AFN Sports • Allsports Products • Australian Surfacing Supplies • Grand Slam Sports Equipment
HiTech Sports • Oxley Nets • Play Hard Sports Equipment • Play-safe Services

ACCESSORIES

Allsports Products • Kelmatt Australia • Oxley Nets • Play-safe Services • Trocellen S.E.A

MAINTENANCE

Astro Synthetic Surfaces • Courtcare • Grass Rubber Play • Play-safe Services • Retech Rubber • Sports Clean
Sportzting Court Care Services • Synthetic Grass & Rubber Surfaces • TigerTurf Australia

BASEWORKS & CIVIL

Genesis Concreting • Scratchin The Surface • SJM Turf & Civil

ACRYLIC SURFACE MANUFACTURE

APT Asia Pacific • Australian Surfacing Supplies • California Sports Surfaces • Era Polymers
KDF Ltd • Mapei Australia • Pacific Urethanes

SYNTHETIC GRASS MANUFACTURE

APT Asia Pacific • FieldTurf Australia • TigerTurf Australia • Urban Turf Solutions

RUBBER SURFACE MANUFACTURE

APT Asia Pacific • Australian Surfacing Supplies • Combitle • Cool Rubber • Era Polymers
Industrial Organics • Pacific Urethanes • Surface Designs • Tyrecycle

ENGINEERING, TESTING & CONSULTING

106 Architects • Acousto-scan • Dalton Consulting Engineers • iDwala • Labosport • PeakUrban
Play-safe Services • Playtest • Smart Connection Consultancy • SportEng

AFFILIATE MEMBERS

American Sports Builders Association • Australasian Wire Industry Association
Australian Leisure Management • Australian Sports Foundation • Sports & Play Construction Association
Synthetic Turf Council • Tennis Queensland-Court Tech • Jack Davies (honorary) • Dr David Eager (honorary)
George Apted (honorary) • Maurice Philp (honorary)

SAPIA CONTRACTORS

QUEENSLAND



ALL SPORT PROJECTS

PRINCIPAL CONTRACTOR

All Sport Projects do more than just surface sports courts, if you have a sport, we can build it, from start to finish. Over the years we have developed a strong professional relationship with a variety of clients including schools, councils, mining companies, sporting associations, military, commercial and private, both in Australia and overseas. From tennis courts, cricket pitches, golf practice and golf driving ranges, landscaping with synthetic lawns, kindergartens, play areas, swimming pool, leisure areas and much more, we offer a complete turnkey solution.

2/39 Ern Harley Dr, Burleigh Heads QLD 4220
07 5593 6691 / 1800 222 090
sales@allsportprojects.com.au
www.allsportprojects.com.au



BIOSCAPES GROUP

PRINCIPAL CONTRACTOR

Bioscapes Group is a family owned synthetic surface construction company delivering high quality projects to retirement villages and sporting clubs. With offices in Melbourne and the Gold coast, we are equipped to service the Eastern side of Australia. Specialising in synthetic sporting surfaces such as bowling greens, multi purpose fields, pickleball courts and more, we are driven by our passion for bringing families and communities together and offer our clients a powerful combination of construction expertise and client management in order to develop relationships that continue beyond construction.

1/33 Industrial Cct, Cranbourne West VIC 3977
1300 4 246 246
admin@bioscapesgroup.com.au
www.bioscapesgroup.com.au



CHAMPION GRASS BY PREMIER GRASS

PRINCIPAL CONTRACTOR

Design and construction of synthetic grass tennis courts, soccer fields, basketball courts, multisport surfaces, cricket nets and pitches, hockey, bowling greens, rugby and AFL pitches. Champion Grass by Premier Grass has an exclusive partnership with Edel Grass Netherlands.

10/1 Stockwell Place, Archerfield QLD 4108
1300 946 808
info@championgrass.com.au
www.championgrass.com.au



CIVIL AND SPORTS CONSTRUCTION

PRINCIPAL CONTRACTOR

Construction and resurfacing of tennis courts, netball courts, basketball courts, multipurpose courts, cricket, long jump, triple jump, lighting, fencing, accessories, retaining, drainage and earth-works. DET preferred supplier since 2015.

4/39 Elgin Street, Alderley QLD 4051
07 3857 7755
admin@centrecourtconstructions.com.au
www.centrecourtconstructions.com.au



SAPIA CONTRACTORS

QUEENSLAND



COURT CRAFT

PRINCIPAL CONTRACTOR

Court Craft has 34+ years' experience as a sports facility construction company. We specialise in the construction, design and maintenance of sport and recreational facilities plus general structural landscaping and civil construction. Court Craft carries out all aspects of projects from planning, Council submissions, construction of facilities and amenities, lighting systems, landscaping, maintenance etc. Court Craft construct facilities for Basketball, Football, Hockey, Lawn Bowls, Netball, Tennis, Volleyball.

55 Loftus Street, Riverstone NSW 2765
1800 996 353 / 02 9763 2900
information@courtcraft.com.au
www.courtcraft.com.au



CUSTOM COURT CONSTRUCTIONS

PRINCIPAL CONTRACTOR

Custom Court Constructions has a total of 40 years' experience throughout Australia in the construction and installation of tennis/multisport courts, sporting facilities, landscaping, repairs and maintenance. CCC caters for a variety of clients including schools, tennis clubs, councils, sporting associations, retirement villages, private and commercial clients. Concrete, roadbase and asphalt bases, lighting and fencing, supply and installation of sporting equipment, multisport courts as well as basketball, netball, volleyball, handball, hopscotch, chess, alphabet, numbers etc.

PO Box 638, Burpengary QLD 4505
0429 772 383 / 0429 772 006
ccc10@tpg.com.au



DYNAMIC SPORTS FACILITIES

PRINCIPAL CONTRACTOR

Dynamic Sports Facilities Australia is an Australian-owned landscape construction and project management company that builds, upgrades, maintains and repairs sporting facilities. If you are after a tennis, netball, basketball, multi court, or a cricket facility from a provider you can trust look no further than the expert team at DSFA. With more than 1,000 sporting facilities to their name and 40+ years' combined experience across the Eastern States, DSFA provides for council, residential, schools and clubs. Fully licensed, certified under Quality Assurance ISO-9001, Occupational Health & Safety ISO-45001 and fully insured, DSFA's credibility is founded on providing a complete service strategically managed from start to finish.

PO Box 709, Moss Vale NSW 2577
1300 653 130 / 02 4869 1816 / 0498 200 749
sales@dsfa.com.au
www.dsfa.com.au



GRASSPORTS QUEENSLAND

PRINCIPAL CONTRACTOR

Grassports Queensland can offer all your sporting and recreational surfacing solutions, from full size synthetic football fields to domestic landscaping, hard courts, rubber surfaces and more.

Unit 2, 1 Casua Drive, Varsity Lakes QLD 4227
07 5593 7427
info@gsqld.com.au
www.grassports.com.au



SAPIA CONTRACTORS

QUEENSLAND



GRUNDY SYNTHETIC SURFACES

SURFACING CONTRACTOR

Jason Grundy has been building sporting and recreational surfaces since 1992. He was previously an important part of a successful synthetic grass and rubber flooring business servicing the east Coast of Australia from Melbourne to Cairns. Grundy Synthetic Surfaces specialises in all types of safety flooring, including Synthetic Grass, Rubber, Timber, Adventure Walking Paths, Retainer Walls, Sand Pits, Digging Patches and shade solutions for both commercial and domestic applications.

50 Tomlinson Road, Caboolture QLD 4510
1300 478 639
info@grundys.com.au
www.grundysynthetic.com.au



JORDIN SPORTS CONSTRUCTIONS

PRINCIPAL CONTRACTOR

Jordin Sports Constructions is a Brisbane based tennis/netball/sports fields/ multipurpose court construction company that has operated continuously in the Queensland and Northern New South Wales region for the last 40 years. We offer a total project service: • Demolition • Earthworks • Base Construction • Surface Installations • Fencing • Landscaping • Lighting • Sports Equipment. We are a preferred contractor with QLD Department of Education & Training and have performed many successful projects for them.

Unit 4/39 Elgin St, Alderley QLD 4051
07 3857 5180 / 0408 453 585
admin@jordinsport.com.au
www.jordinsport.com.au



PRECISION SPORTS LIGHTING + ELECTRICAL

ASSOCIATE CONTRACTOR

Installation and maintenance of specialised lighting for sporting fields and public spaces. Design, construction and certification packages, conforming to Australian Standards.

24/1147 South Pine Road, Arana Hills QLD 4054
1300 048 144
info@precisionsports.com.au
www.precisionsports.com.au

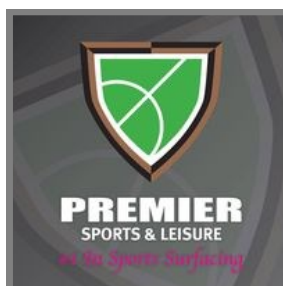


PREMIER SPORTS & LEISURE

PRINCIPAL CONTRACTOR

Construction, supply, installation and removal of sports accessories, fencing, lighting, surfacing of acrylic and synthetic grass sports courts, and recreation/landscape areas.

24 Hasp Street, Seventeen Mile Rocks QLD 4073
1300 552 882
enquiry@premiersportsleisure.com.au
www.premiercourts.com.au



CONTRACTORS

QUEENSLAND



PRO ONE SOFTFALL

SURFACING CONTRACTOR

- Theme park and water park surfacing
- Playground surfacing and playground upgrades
- Rubber animals and shapes

- Surfacing repairs
- Sports surfacing
- Playground and surfacing compliance checks

C1 & C2 239 Brisbane Road, Biggera Waters QLD 4214
1800 033 406
andrew@proone.com.au
www.proone.com.au



SPORTS BUILD

PRINCIPAL CONTRACTOR

Sports Build Pty Ltd is a multi-disciplined, specialty sports construction business providing the full turn-key solution in the delivery of sporting precincts. We are proud to design, construct and install our expertise across various disciplines in Natural turf, Powergrass hybrid, Synthetic, FIFA, AFL, Bowls, Basketball, Netball, Hockey, Soccer, Rugby and Multipurpose Sports Playing surfaces. Sports Build can provide as much or as little in the delivery of your new sports facility from concept to delivery.

Lobby 1, L2, 76 Skyring Tce, Newstead QLD 4006
1800 447 744
info@sportsbuild.com.au
www.sportsbuild.com.au
QBCC Lic. 15111789

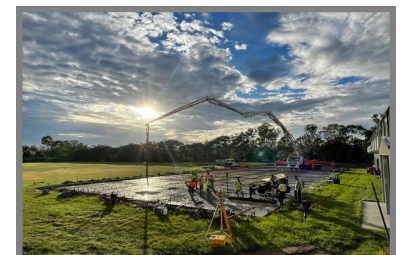


SPORTS CONSTRUCTION GROUP

PRINCIPAL CONTRACTOR

Sports Construction Group is a family-owned and operated company that specialises in the resurfacing and construction of premium sports courts for a wide array of clients including schools, councils, clubs and homeowners, including basketball, netball and tennis courts. We have a large team of experienced commercial concretors and specialised equipment installers. Our background in the concreting industry means that we have the latest in laser technology to achieve the best result when grades and fall are paramount. SCG services most areas in Queensland as well as northern NSW.

26/23 Ashtan Place, Banyo QLD 4014
1300 267 787
david@sportsconstructiongroup.com.au
www.sportsconstructiongroup.com.au

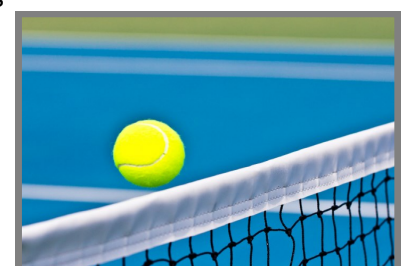


SPORTZING COURT CARE

SURFACING + ASSOCIATE CONTRACTOR

Sportzing Court Care, established in 1994, specialise in synthetic grass and hard court tennis court cleaning and maintenance. Sportzing, a family owned and operated company, services tennis courts in Queensland, New South Wales and Victoria.

118 North Buderim Boulevard, Buderim 4556
1800 818 894 / 0490 053 733
headoffice@sportzing.com.au
www.sportzing.com.au



CONTRACTORS

NEW SOUTH WALES/A.C.T.



ALL GRASS SPORTS SURFACES

All Grass Sports Surfaces has been at the forefront of tennis court and sports field construction and maintenance for nearly thirty years. In that time, AGSS has built over 3,000 tennis courts and sports facilities, both domestic and commercial, acrylic and synthetic grass, throughout Sydney, country NSW and the ACT. As well as building sports courts, AGSS builds and surfaces all types of indoor and outdoor sports courts, including netball courts, basketball courts, multi-sport courts, cricket wickets and practice nets for schools, private residences and commercial facilities. AGSS also installs rubber softfall and is a 'one stop' shop, providing design, project management, construction and ongoing maintenance services to ensure courts gives customers years of playing pleasure.

6 Bundara Close, Mona Vale NSW 2103
02 9979 2447 / 0412 476 270
mark@allgrasssportssurfaces.com.au
www.allgrasssportssurfaces.com.au



BRUCE'S PLAYGROUNDS

Bruce's Playgrounds & Landscaping are landscape, rubber softfall and playground specialists. They provide friendly, creative and professional solutions for outdoor spaces, having designed solutions for domestic, commercial and government clients in Canberra for the last 20 years.

77 Heffernan Street, Mitchell ACT 2911
02 6241 0446
brucesbobcats@bigpond.com
www.brucesplaygrounds.com.au



C&EA SCOPE

Electrical Contracting Services: Specialising in sports lighting—design, installation and repairs—LED, Design, Installation & Upgrades to all areas of NSW. All types of floodlighting columns, assembled and erected and also supplied at competitive prices. Standard floodlighting masts to 60 metres with crossarms, headframes or lamping platforms, see saw columns, power lift columns, High Mast Lighting Towers with lowering headframe and internal winch; Installation of floodlighting foundations to AS/NZS 4676—excavation, reinforcing and concrete placing.

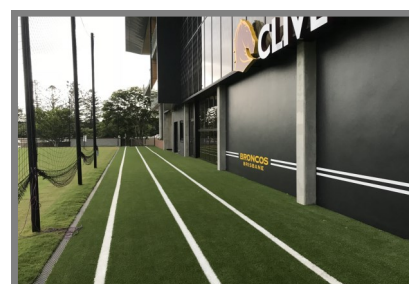
5 Como Pde, Como West NSW 2226
02 9528 9128 / 0418 276 395
cscope@live.com.au
www.poleinstallationservices.com.au



CHAMPION GRASS BY PREMIER GRASS

Design and construction of synthetic grass tennis courts, soccer fields, basketball courts, multisport surfaces, cricket nets and pitches, hockey, bowling greens, rugby and AFL pitches etc. Exclusive partnership with Edel Grass Netherlands.

4/465 Victoria Street Wetherill Park NSW 2164
1300 946 808
info@championgrass.com.au
www.championgrass.com.au



CONTRACTORS

NEW SOUTH WALES/A.C.T.



CHAMPION SPORTS GROUNDS

PRINCIPAL CONTRACTOR

Champion Sports Grounds was founded upon 20 years' global experience in school sports ground construction and council and sports club facilities installation – be it natural grass, synthetic grass, concrete or asphalt. Champion Sports Grounds specialise in quality school sports grounds construction. Sydney and NSW schools and sports clubs look to us for an exceptional service, value for money and high quality products and standard of workmanship.

15 Dickin Avenue, Sandringham NSW 2219
02 9529 9516 / 0426 255 911
sales@championsportsgrounds.com.au
www.championsportsgrounds.com.au



COURT CRAFT

PRINCIPAL CONTRACTOR

Court Craft has 34+ years' experience as a sports facility construction company. We specialise in the construction, design and maintenance of sport and recreational facilities plus general structural landscaping and civil construction. Court Craft carries out all aspects of projects from planning, Council submissions, construction of facilities and amenities, lighting systems, landscaping, maintenance etc. Court Craft construct facilities for Basketball, Football, Hockey, Lawn Bowls, Netball, Tennis, Volleyball.

55 Loftus Street, Riverstone NSW 2765
1800 996 353 / 02 9763 2900
information@courtcraft.com.au
www.courtcraft.com.au



COURTMASTER SPORTS SURFACING

SURFACING CONTRACTOR

Courtmaster Sports Surfacing offers acrylic and synthetic grass tennis court surfacing as well as tennis court maintenance.

Manly Grove Business Park
Unit A15, 1 Campbell Parade Manly Vale NSW 2093
Phone: 0403 662 667
nicholas@courtmaster.com.au
www.courtmaster.com.au



DYNAMIC SPORTS FACILITIES

PRINCIPAL CONTRACTOR

Dynamic Sports Facilities Australia is an Australian-owned landscape construction and project management company that builds, upgrades, maintains and repairs sporting facilities. If you are after a tennis, netball, basketball, multi court, or a cricket facility from a provider you can trust look no further than the expert team at DSFA. With more than 1,000 sporting facilities to their name and 40+ years' combined experience across the Eastern States, DSFA provides for council, residential, schools and clubs. Fully licensed, certified under Quality Assurance ISO-9001, Occupational Health & Safety ISO-45001 and fully insured, DSFA's credibility is founded on providing a complete service strategically managed from start to finish.

PO Box 709, Moss Vale NSW 2577
1300 653 130 / 02 4869 1816 / 0498 200 749
sales@dsfa.com.au
www.dsfa.com.au



CONTRACTORS

NEW SOUTH WALES/A.C.T.



GENESIS CONCRETING

ASSOCIATE CONTRACTOR

Supply and install formwork, place and tie reinforcement and place and finish concrete to concrete structures in the civil and commercial construction industry across Syd-

U13/115 Woodpark Road, Smithfield NSW 2164
02 9892 1339
info@genesisconcrete.com.au
www.genesisconcrete.com.au

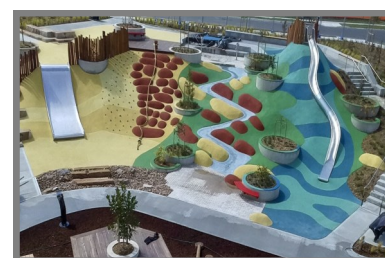


GLOOLOOP SURFACING

PRINCIPAL CONTRACTOR

Glooloo Surfacing is renowned as one of Australia's leading wetpour rubber softfall, synthetic grass and permeable paving specialists. Director Spencer Wallace and his team have combined experience exceeding 50 years in the industry, and remain focused on utilising quality, durable products - suitable to the Australian climate. Glooloo Surfacing consistently delivers innovative, striking, and enduring projects in Commercial and domestic spaces, including parks and playgrounds, schools, childcare centres, public spaces, and government facilities.

3/17A Amax Avenue, Girraween NSW 2145
02 8443 0113
spencer@glooloo.com.au
www.glooloo.com.au



GRASS RUBBER PLAY

SURFACING CONTRACTOR

Grass Rubber Play supply and install: Synthetic grass surfacing, Softfall rubber, Acrylic painted sports courts. Based in Sydney and servicing all of NSW.

42 Old South Head Road, Vaucluse NSW 2030
1300 211 461
info@grassrubberplay.com.au
www.grassrubberplay.com.au



KANGAROO COURTS

PRINCIPAL CONTRACTOR

Kangaroo Courts Australia has over 30 years' experience in the installation of "Hard Wearing Long Lasting Surface Systems" across Australia. Our company only installs all weather surface systems to courts, recreational and trafficable areas. Our complete service involves site inspection, consultation, design, surface preparation, installation and line marking. On areas indoor and out on new and aged concrete and asphalt surfaces. Kangaroo Courts Australia is committed to customer satisfaction and quality.

PO Box 1326, Bathurst NSW 2795
1300 426 878 / 0416 125 565
admin@kangaroocourts.com.au
www.kangaroocourts.com.au



CONTRACTORS

NEW SOUTH WALES/A.C.T.



KCL SPORTS

PRINCIPAL CONTRACTOR

KCL Sports is a 100% Australian owned company providing expertise in the construction and installation of synthetic grass for all sporting and landscaping requirements since 1982. Construction of tennis courts, football and hockey fields and bowling greens. Installation of floodlighting systems.

Box 2067 Gateshead Business Centre
Gateshead NSW 2290
02 4944 9188 / 0414 685 519
kclsport@kclsport.com.au
www.kclsports.com.au



MALCOLM KESSELL

SURFACING CONTRACTOR

With over 30 years' experience in the sports and domestic resurfacing industry, Mal Kessell has extensive insights in all facets of resurfacing. Services include: Resurfacing of acrylic and synthetic grass sporting areas, Resurfacing of playground and domestic areas in synthetic grass, Repairs to acrylic and synthetic surfaces, Supply of sports equipment.

46 Berringer Way, Flinders NSW 2529
0404 456 877
malcolmkessell@gmail.com
www.sportsresurfacing.com.au

malcolm kessell



MPC FENCING

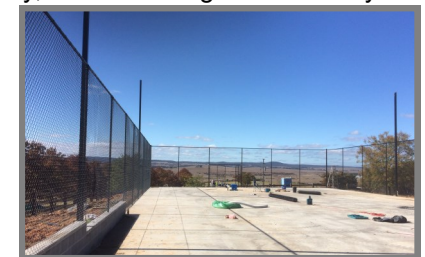
ASSOCIATE CONTRACTOR

MPC Fencing specialises in the design, supply and installation of tennis courts and sporting enclosures, and all chain mesh fencing needs. With over 25 years of experience in the fencing industry, MPC Fencing has a history of working hand in hand with builders, their customers and clients.

PO Box 499, Leichhardt NSW 2040
0419 420 916
mpcfence@gmail.com



MPC FENCING



PREMIER SPORTS & LEISURE

PRINCIPAL CONTRACTOR

Construction, supply, installation and removal of sports accessories, fencing, lighting, surfacing of acrylic and synthetic grass sports courts, and recreation/landscape areas.

24 Hasp Street, Seventeen Mile Rocks QLD 4073
1300 552 882
enquiry@premiersportsleisure.com.au
www.premiercourts.com.au



CONTRACTORS

NEW SOUTH WALES/A.C.T.



RECREATIONAL SURFACING

PRINCIPAL CONTRACTOR

Recreational Surfacing has been active in the construction and surfacing of recreational areas for the past three decades. Our association with the manufacturers of our quality products has been long and fruitful. We fully support the companies manufacturing our products, they in turn support us with new innovations and keep abreast of the market lead. Our work has seen us construct or surface over 7000 tennis courts world wide along with basketball courts, netball courts, badminton courts, gymnasium floors, running tracks and all indoor or outdoor sporting venues.

653 Pacific Highway, Killara NSW 2071
02 9499 2100 / 0412 229 528
mortlock@alpha.net.au
www.recsurf.com



RIVERINA SPORTING SERVICES

PRINCIPAL CONTRACTOR

Riverina Sporting Services offer construction of all sporting surfaces; servicing of sporting surfaces including tennis, cricket, bowling, football; design and construction of football ovals.

2619 Culcairn-Holbrook Road, Culcairn NSW 2660
0458 744 064
tom@riverinasports.com.au
www.riverinasports.com.au



SPORTS BUILD

PRINCIPAL CONTRACTOR

Sports Build Pty Ltd is a multi-disciplined, specialty sports construction business providing the full turn-key solution in the delivery of sporting precincts. We are proud to design, construct and install our expertise across various disciplines in Natural turf, Powergrass hybrid, Synthetic, FIFA, AFL, Bowls, Basketball, Netball, Hockey, Soccer, Rugby and Multipurpose Sports Playing surfaces. Sports Build can provide as much or as little in the delivery of your new sports facility from concept to delivery.

12 Wright Place, Armidale NSW 2350
1800 447 744
info@sportsbuild.com.au
www.sportsbuild.com.au



SPORTS CLEAN

ASSOCIATE CONTRACTOR

SportsClean's core business is the maintenance of synthetic grass surfaces in both the commercial and domestic markets across Sydney, regional NSW and the ACT. It has the experience and capacity in personnel and equipment to maintain and repair wet, sand and rubber filled surfaces.

Unit 9 / 9-11 Chaplin Drive, Lane Cove West NSW 2066
02 9420 1200
info@sportsclean.com.au
www.sportsclean.com.au



CONTRACTORS

NEW SOUTH WALES/A.C.T.



SPORTSZONE GROUP

PRINCIPAL CONTRACTOR

Sportszone Group is a builder of sports fields; surfacing and maintenance including tennis, football, bowling greens, hockey fields, basketball and netball courts. Sportszone Group has been servicing Australia and the world for the last 15 years and have over 21 years' experience. Projects include Triathlon finishing track and hockey pitch, Sydney 2000 Olympics, hockey fields in Japan, football pitches and putting greens in Macau, prestige courts in Mauritius and tennis courts and cricket pitches throughout Australian Clubs and private homes, as well as a number of large areas for school playgrounds.

Unit 5, 3-5 Flora Street, Kirrawee NSW 2232
1300 302 398
craig@sportszonegroup.com.au
www.sportszonegroup.com.au



SYNTHATECH AUSTRALIA

SURFACING CONTRACTOR

Supply and installation of wet pour rubber, soft fall and synthetic grass for child care centres, schools, councils and multi-sport courts. Ground works and base preparation.

6/13 Grieve Close, West Gosford NSW 2250
0452 476 621 / 0422 040 043
info@synthatech.com.au
www.synthatechaustralia.com.au

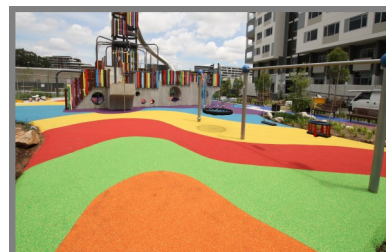


SYNTHETIC GRASS & RUBBER SURFACES

PRINCIPAL CONTRACTOR

Synthetic Grass & Rubber Surfaces Australia Pty Ltd, are a supplier and installer of both Synthetic Grass and Rubber Wetpour for over 35 years, covering all of NSW and ACT. Synthetic Grass & Rubber Surfaces Aust Pty Ltd look after all commercial, domestic, schools, councils, childcare centres for all their surfacing needs. Our team have years' of combined experience in providing prompt and efficient service to deliver your project on time and on budget. Our Installers are long-term, fully qualified and accredited. They bring their experience, skill and professionalism to every

3 Tepko Road, Terrey Hills NSW 2084
02 9986 1133
mark@syntheticgrass.com.au
www.syntheticgrass.com.au



SYNTHETIC SPORTS GROUP

PRINCIPAL CONTRACTOR

Synthetic Sports Group is a family owned company specialising in the design, construction and installation of sporting surfaces, led by Hayden Garn with experience stretching over 20 years. We offer full construction of all sports from domestic tennis courts to multisport school facilities to surfacing for commercial facilities such as bowling greens, tennis centres, futsal centres, football and hockey fields, basketball and netball courts and all synthetic sports surfaces. We also offer repair, resurfacing and conversion of existing sports facilities.

Unit 4, 20-22 Yalgar Road, Kirrawee NSW 2232
0415 833 060
hayden.garn@syntheticssportsgroup.com.au
www.syntheticssportsgroup.com.au



CONTRACTORS

VICTORIA



A.S. LODGE

PRINCIPAL CONTRACTOR

A.S. Lodge has constructed over 3,500 tennis courts for municipal councils, schools, universities, clubs and domestic clients since 1979. A.S. Lodge combines their membership of the Australian Institute of Engineers and formal training to develop the best synthetic surfaces available including: Tennis, Hockey, Cricket. Floodlighting and Accessories including Basketball; Netball; Volleyball; Golf; Ball machines; Umpire stands.

Factory 14/114 Merrindale Drive, Kilsyth VIC 3137
03 9761 4930
info@asltennis.com
www.asltenniscourts.com



ALL SEASONS SYNTHETIC TURF

PRINCIPAL CONTRACTOR

ASST is Perth's leading synthetic surfacing company. We have built strong relationships with a wide variety of sectors, local government, schools, mining companies, sporting facilities, commercial and residential. Now also in Victoria.

26 Bakewell Drive, Port Kennedy WA 6172
1300 931 443 / 08 9524 6065

2 Brady Close, Braeside VIC 3195
03 9078 1313

info@asst.net.au
www.allseasonssyntheticurf.com.au



B & T POOL PAINTING & COURT SURFACING

SURFACING CONTRACTOR

Pool Painting, commercial and domestic pools – concrete and fibreglass
Epoxy or chlorinated rubber pool paint
Pool maintenance, crack repairs, tiling and pool cleanouts
Court Surfacing, acrylic sports court surfacing – concrete or asphalt courts
Rebound Ace Synpave / Plexipave products
Crack repairs, court cleaning and line marking
Servicing regional Victoria – councils, sports clubs and private pools and courts

Bendigo VIC 3550
0438 001 427
info@btpoolsports.com.au
www.btpoolsports.com.au



BIO SCAPES GROUP

PRINCIPAL CONTRACTOR

Bioscapes Group is a family owned synthetic surface construction company delivering high quality projects to retirement villages and sporting clubs. With offices in Melbourne and the Gold coast, we are equipped to service the Eastern side of Australia. Specialising in synthetic sporting surfaces such as bowling greens, multi purpose fields, pickleball courts and more, we are driven by our passion for bringing families and communities together and offer our clients a powerful combination of construction expertise and client management in order to develop relationships that continue beyond construction.

1/33 Industrial Cct, Cranbourne West VIC 3977
1300 4 246 246
admin@bioscapesgroup.com.au
www.bioscapesgroup.com.au



CONTRACTORS

VICTORIA



BUDGET TENNIS COURTS

PRINCIPAL CONTRACTOR

Budget Tennis Courts, established in 1988, specialise in new tennis court design and construction, with a choice of synthetic grass, Rebound Synpave, classic clay, granitic sand or asphalt surfaces to meet your requirements. We also re-surface existing tennis courts and do tennis court conversions. Budget Tennis Courts also construct multi use sporting field surfaces. We also offer contract precision laser levelling services.

P.O. Box 231 Baxter VIC 3911
03 9775 5571 / 0415 543 321
sales@budgettenniscourts.com
www.budgettenniscourts.com



CHAMPION GRASS BY PREMIER GRASS

PRINCIPAL CONTRACTOR

Design and construction of synthetic grass tennis courts, soccer fields, basketball courts, multisport surfaces, cricket nets and pitches, hockey, bowling greens, rugby and AFL pitches etc. Exclusive partnership with Edel Grass Netherlands.

2/640-680 Geelong Road, Brooklyn VIC 3012
03 9369 2999
info@championgrass.com.au
www.championgrass.com.au



COURTCARE

ASSOCIATE CONTRACTOR

Courtcare cleans and repairs synthetic grass, red porous and acrylic surfaces, including removal and treatment of moss, algae and weeds, regular maintenance, court equipment, racquet restrings and tennis coaching. Owner Doug Grant also takes groups for tennis and trekking throughout the Himalayas.

4 Valley Parade, Glen Iris VIC 3146
03 9809 4444
info@courtcare.com.au
www.courtcare.com.au



GRASSPORTS AUSTRALIA

PRINCIPAL CONTRACTOR

In business since the 1960's, Grassports Australia offers full project management, expert inhouse design, engineering and construction from inception to completion. We provide synthetic grass and hardcourt surfaces for sports fields, tennis courts, multipurpose learning and play spaces, all customised to your needs. Grassports offer an Australian made specialised range of synthetic sporting surfaces for students, families, sports people and performance athletes. We are certified installers with international sporting bodies including FIFA, FIH, ITF, and recognised contractor to the Victorian School Building Authority, Department of Education and the Catholic Education Authority. Grassports is a multi award winning company both Nationally and Internationally.

1/38 Green Street, Doveton VIC 3177
03 9792 0622
info@grassports.com.au
www.grassports.com.au



CONTRACTORS

VICTORIA



KEVIN McNAMARA & SON

PRINCIPAL CONTRACTOR

The art of building tennis courts, landscapes and swimming pools represents a life's work for Kevin McNamara. He formed his landscape design and construction business in 1968, later specialising in building tennis courts that form a part of the garden landscape, often incorporating features such as natural stone retaining walls and draw curtains as a substitute for fixed fencing. The company won many awards for their work. Kevin has been at the forefront of initiatives to raise industry standards, founding SAPIA and serving on Standards Australia panels for Sports Lighting and Synthetic Sports Surfacing.

Unit 18, 75 Endeavour Way, Sunshine West VIC 3020
03 9315 1123
admin@courtsandpools.com.au
www.courtsandpools.com.au



MATCHPOINT SYSTEMS

SURFACING CONTRACTOR

Matchpoint Systems specialises in the installation of Rebound Ace, PlexiPave and Premier Court products. We have been installing acrylic and cushioned acrylics for 28 years, to private courts, clubs, associations and councils. We have installed courts for Hingis, Becker, Huber, Charlie Steeb, Melbourne Park, White City, Memorial Drive, the Federer Foundation, Davis Cup, Women's Masters etc. We also install indoor systems such as the Rebound Impact Cushioned System and cushioned running

PO Box 698, Beaconsfield VIC 3807
0418 392 223
info@matchpointsystems.com.au
www.matchpointsystems.com.au

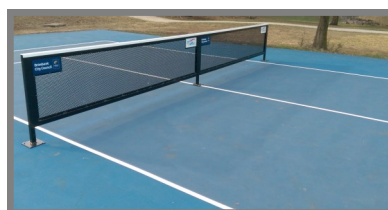


PLAY-SAFE SERVICES

ASSOCIATE CONTRACTOR

Play-Safe Services for all indoor and outdoor play, sports, shade and safety needs, we manufacture sporting equipment, install and maintain playgrounds, shade sails, safety inspections, gymnastics equipment, fitness equipment, home multi sports courts and sporting equipment to suit your needs and budget.

1/56 Aster Avenue, Carrum Downs VIC 3201
03 9775 0771
info@play-safe.com.au
www.play-safe.com.au



RECREATIONAL TURF SURFACES

PRINCIPAL CONTRACTOR

Recreational Turf Surfaces are specialists in designing, constructing and installing both sand filled artificial grass courts and hard courts for a variety of sports and applications. We can consult with you on dimensions and provide estimates on costs. We can provide advice on fencing, lighting, accessories, retaining walls and overlay lines or goalposts for additional sports such as volleyball, netball, basketball or cricket.

PO Box 1051, Caulfield North VIC 3161
0414 311 592
recturfsurfaces@optusnet.com.au
www.recturf.com.au



CONTRACTORS

VICTORIA

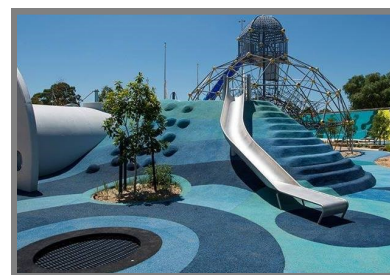


RUBBER TOUGH INDUSTRIES

SURFACING CONTRACTOR

Established in 1992, RubberTough Industries is recognised to be one of Australia's leading wet pour rubber surfacing companies. Our operations are continually growing and currently allow us to completely service Australia Wide. Not only do we do wet pour rubber. Our manufacturing facility specialises in the production of safety mats designed for swings and slide exits as well as rubber log edging used as borders for playgrounds, sandpits and many other associated rubber products including synthetic turf. Our ongoing partnerships and networks allow us to access the products and services of companies specialising in synthetic grass, multi sports surfaces and shade sails allowing us to offer complete surfacing options.

10 Wills Street, Warragul VIC 3820
03 5622 0693
admin@rubbertough.com.au
www.rubbertough.com.au



SCRATCHIN THE SURFACE

PRINCIPAL CONTRACTOR

Scratchin The Surface are landscape and minor civil contractors. They construct outdoor sports courts and infrastructure, including tennis, netball, basketball, cricket, fencing, as well as paths / concrete / asphalt / permeable.

18-22 Drummond Road, Seville Vic 3139
0412 495 973
rbraidner@gmail.com

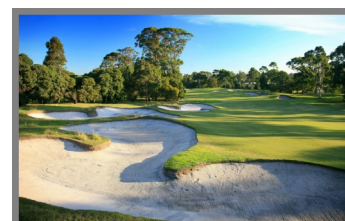


SJM TURF & CIVIL

PRINCIPAL CONTRACTOR

SJM Turf & Civil is a Civil Construction Organisation who specialise in the development and construction of Sporting fields, Reserves, Racing Tracks and Golf Courses. SJM employ a specialist team of Project Managers, Site Supervisors, Plant Operators, Skilled labourers all with significant knowledge in turf construction and maintenance. SJM own and operate a fleet of over 20 pieces of plant and machinery purchased specifically for these sporting development works.

Factory 2/38 Tarmac Way, Pakenham Vic 3810
1300 856 886
admin@sjmgroup.com.au
www.sjmgroup.com.au



S.M. CANTWELL POOLS & COURTS

PRINCIPAL CONTRACTOR

Cantwell Pools & Courts is a leader in the design and construction of inground swimming pools, spas and tennis courts. In our 20 years of operation, we've developed a reputation for producing the highest quality results on all projects, from modest backyard dreams to majestic landscape visions. Cantwell Pools & Courts has the expertise and professionalism to turn your individual vision into a reality.

254 Lower Plenty Road, Rosanna Vic 3084
03 9458 1902 / 0418 175 764
info@cantwellpools.com.au
www.cantwellpools.com.au



CONTRACTORS

VICTORIA



SPORTS COURTS VICTORIA

SURFACING CONTRACTOR

All sports court requirements. Full construction, repairs, maintenance, pressure washing, resurfacing and line-marking of sports courts.

6/22 Apparel Close, Breakwater VIC 3219
03 5248 3126 / 0418 176 083
jason@sportscourtsvictoria.com.au
www.sportscourtsvictoria.com.au



SPOT ON SYNTHETICS

PRINCIPAL CONTRACTOR

Spot On Synthetics is a Victorian based company and was formed in 2013. The staff at Spot On Synthetics are trained professionals installing soccer fields, hockey, tennis, cricket, multi-sport and domestic landscape synthetic systems worldwide. Our quality staff have over 30 years shared experience and have travelled Australia wide and internationally for their sought after expertise in Hockey, Tennis and Soccer fields specifically. Spot on Synthetics will meet the accreditations of all Sport Governing Bodies including FIH, FIFA, ITF and IRB.

19 Cathedral Rise, Doreen VIC 3754
0447 886 005
info@spotonsynthetics.com.au
www.spotonsynthetics.com



THE FENCE CONSULTANT

ASSOCIATE CONTRACTOR

Fencing materials, quotations and advice. National Distributor of the "Post Collar Protector".

Unit 2, 62-66 Lara Way, Campbellfield VIC 3061
03 9357 8804 / 0433 388 444
thefence@bigpond.net.au



The Fence Consultant
Pty Ltd



TURF ONE

PRINCIPAL CONTRACTOR

Turf One covers all major sporting surfaces including synthetic, natural and hybrid playing fields, along with acrylic and synthetic courts and polyurethane athletics tracks. As a full service, engineering and project management led organisation, Turf One is uniquely positioned in the market to service clients across all aspects of their project from the initial stage of concept through design, construction, installation and maintenance.

Unit 12, 89 Simcock Avenue, Spotswood VIC 3015
03 9719 1900
info@turfone.com.au
www.turfone.com.au



CONTRACTORS TASMANIA



BLACKTAC

PRINCIPAL CONTRACTOR

Blacktac is a leader in commercial and residential surface construction, specialising in tennis and netball court surfaces, driveways, roadways and car parks, as well as recreational areas. Founded in 1975, Blacktac is a Tasmanian owned company which leads the way in surface construction, from asphalt driveways and roadways to Plexipave surfaces.

448 Westbury Road, Prospect TAS 7250
Phone: 03 6344 5723 / 0417 331 001
blacktac@bigpond.com
www.blacktac.com.au



CONTRACTORS

SOUTH AUSTRALIA



BOAG CONSTRUCTION

PRINCIPAL CONTRACTOR

BoagSPORTS has a passion for sports construction. We've been leaders in the industry for more than 30 years, installing the best quality surfaces on time, every time, with over 1,000 sports surface installations completed in Australia and overseas. We construct and surface bowling greens, tennis courts, sports fields, school ovals.

PO Box 542, Magill SA 5072
08 8390 1393 / 1300 762 360
info@boagconstruction.com.au
www.boagsports.com



GREENPLAY

PRINCIPAL CONTRACTOR

Greenplay Australia was established in 2005. We have many years' experience in the landscaping industry, and are the agent for Limonta Sport – an environmentally manufactured, lead free, soft synthetic grass surface that feels as good as it looks.

Unit 2, 165 Morphett Road, North Plympton SA 5037
1300 769 499
info@greenplay.com.au
www.greenplay.com.au



SPORTS BUILD

PRINCIPAL CONTRACTOR

Sports Build Pty Ltd is a multi-disciplined, specialty sports construction business providing the full turn-key solution in the delivery of sporting precincts. We are proud to design, construct and install our expertise across various disciplines in Natural turf, Powergrass hybrid, Synthetic, FIFA, AFL, Bowls, Basketball, Netball, Hockey, Soccer, Rugby and Multipurpose Sports Playing surfaces. Sports Build can provide as much or as little in the delivery of your new sports facility from concept to delivery.

Lobby 1, L2, 76 Skyring Tce, Newstead QLD 4006
1800 447 744
info@sportsbuild.com.au
www.sportsbuild.com.au



SURFACING CONTRACTORS AUSTRALIA

PRINCIPAL CONTRACTOR

Surfacing Contractors Australia is involved in the construction and surfacing of synthetic grass and acrylic surfaces, including playgrounds, rubber softfall, running tracks, long jump run ups, indoor sports floors, sales and installation of sports and fitness equipment. Offices in both South Australia and Queensland.

PO Box 76, Mitcham SC, Torrens Park SA 5062
1300 682 772 / 0448 488 024
mark@surfcon.com.au
www.surfcon.com.au



CONTRACTORS

WESTERN AUSTRALIA



ALL SEASONS SYNTHETIC TURF

PRINCIPAL CONTRACTOR

ASST is Perth's leading synthetic surfacing company. We have built strong relationships with a wide variety of sectors, local government, schools, mining companies, sporting facilities, commercial and residential.

26 Bakewell Drive, Port Kennedy WA 6172
1300 931 443 / 08 9524 6065

2 Brady Close, Braeside VIC 3195
03 9078 1313

info@asst.net.au
www.allseasonssyntheticurf.com.au



ASTRO SYNTHETIC SURFACES

PRINCIPAL CONTRACTOR

Astro Synthetic Surfaces supply and install softfall rubber and synthetic turf for all surfaces: high-quality soft fall playgrounds surfaces, water play grounds, splash parks, synthetic grass, rubber mulch and cricket pitches fully built to Australian standards.

468 Great Eastern Highway, Ascot WA 6104
08 9472 0021
sales@astrowa.com.au
www.astrosynthetic-surfaces.com.au



EVERGREEN SYNTHETIC GRASS

PRINCIPAL CONTRACTOR

Evergreen Synthetic Grass (WA) have been supplying and installing artificial grass since 1996. Evergreen specialises in bowling greens and synthetic sports surfacing.

23 Langar Way, Landsdale WA 6065
08 9303 2130 / 0417 770 010
nicola@evergreenwa.com.au
www.evergreensyntheticgrass.com.au



GREEN PLANET GRASS

PRINCIPAL CONTRACTOR

Green Planet Grass design, construct and surface bowling greens (including conversion from grass to synthetic), cricket pitches, tennis courts, hockey fields, football and futsal fields, as well as commercial installations such as child care centres and schools.

Unit 2, 21 Harris Road, Malaga WA 6090
08 9209 2669
tony@greenplanetgrass.com.au
www.greenplanetgrass.com.au



CONTRACTORS

WESTERN AUSTRALIA



PERTH PLAYGROUND & RUBBER

SURFACING CONTRACTOR

- Installation of Softfall Surfaces—Rubber / Sand / Mulch
- Playground Installation, repairs and maintenance
- Earthworks and minor landscaping

5 Kitson Place, Maddington WA 6109
0412 240 807
mike@perthplaygroundandrubber.com.au
www.perthplaygroundandrubber.com.au



RETECH RUBBER

SURFACING CONTRACTOR

All types of softfall surface solutions tailor made for safety, function and presentation, including: soft fall rubber surfaces for playgrounds, aged care facilities and child care facilities, synthetic grass, cricket wicket covers, playground accessories (3D shapes/animals), design, maintenance and repairs, DIY pre cast tiles.

70A Division Street, Welshpool WA 6106
08 9458 4244
info@retechrubber.com.au
www.retechrubber.com.au



SPORTS SURFACES

PRINCIPAL CONTRACTOR

Construction and surfacing of acrylic and synthetic turf sports facilities, including tennis courts, bowling greens, hockey, soccer pitches, putting greens, driving ranges, long jump and running tracks. Authorised Plexipave installer. Fencing, equipment, laser levelling, maintenance and remediation, mine sits and remote areas.

Unit 3, 14 King Edward Road, Osborne Park WA 6017
08 9244 2299 / 0468 610 608
enquiries@sportssurfaces.com.au
www.sportssurfaces.com.au



WEST COAST SPORTING SURFACES

PRINCIPAL CONTRACTOR

West Coast Sporting Surfaces (WCSS) is a highly regarded Perth based company that specialises in the installation and resurfacing of all synthetic and hard acrylic sports surfaces. The current owner of the company, Mark Tucker, has over 20 years' experience in this industry, achieving an excellent reputation amongst clients ranging from schools, sporting and recreational bodies and local government organisations. WCSS design, resurface and supply care and maintenance packages for tennis, netball, basketball, cricket and multi sport courts.

3/32 Attwell Street, Landsdale WA 6064
0419 944 341
info@wcscs.com.au
www.wcscs.com.au



CONTRACTORS

NORTHERN TERRITORY



NT SHADE

PRINCIPAL CONTRACTOR

NT Shade offers a complete Playground Installation Package:

- Shade Structures and Rubber Softfall
- Certified Softfall Sand and Synthetic Grass
- Kompan Playground and Exercise Equipment
- Softfall Testing and Playground Audits

Sheds 1,2 & 4, 59 Reichardt Road, Winnellie NT 0820

Chris 0414738231 / Michelle 0403117332

michelle@ntshade.com.au

chris@ntshade.com.au

www.ntshade.com.au



SURFACING AND PLAYGROUNDS

PRINCIPAL CONTRACTOR

Established in 2009, NT Sports & Playground Surfacing offers construction of playgrounds, tennis and basketball courts; softfall testing and playground auditing; sports equipment supply; and all types of synthetic surfacing/grass/rubber.

PO Box 36186, Winnellie NT 0821

08 8988 2088

bob@ntsurfacing.com.au

www.ntsynchronicsurfacing.com.au



MANUFACTURERS & SUPPLIERS



AFN SPORTS

NATIONAL

AFN is one of the biggest manufacturers of sports equipment in South East Asia and also the OEM to various companies in the Europe and Australian market, with more than 25 years' experience in the industry. The philosophy of AFN Sports is to produce high quality aluminium sports and athletic products and accessories for the global market. AFN is certified by IAAF, German TUV & BWF. Today, AFN Sports has set its base in Malaysia to take advantage of the economic production costs and at the same time is in a better position to serve the emerging regional market in Asia and around the world.

Lot 10998, Jalan Sungai Jati, 41000 Klang, Selangor, Malaysia
+603 3372 2008 +603 3382 1008
sales@afnsports.com.my
www.afnsports.com.my



ALLSPORTS PRODUCTS

NATIONAL

Allsports Products manufacture tennis nets and net posts and have patented a design for lockable safety net pots winders. Their winders are used exclusively by Tennis Australia for the Australian Open. The patented internal and external net posts winders are stainless steel with a fold away handle for safety, are fully guaranteed against faulty materials and workmanship. The external tennis net posts winders will suit standard type net posts, either round or square.

10 Carpenter Close, Edmonton QLD 4869
0419 706 030
sales@allsportsproducts.com.au
www.allsportsproducts.com.au



APT ASIA PACIFIC

NATIONAL

APT Asia Pacific is a vertically integrated manufacturer of textile yarns, synthetic grass, coatings and adhesives. The complete range includes artificial turf for any sporting or landscape application, as well as polyurethane-based coatings for athletics tracks, indoor gymnasium flooring applications, industrial flooring, roofing, and children's playground surfacing, as well as cushioned acrylic surfaces for court sport applications.

Factory 3 Dunlopillo Drive, Dandenong South VIC 3175
03 8792 8000
info@aptasiapacific.com.au
www.aptasiapacific.com.au



AUSTRALIAN SURFACING SUPPLIES

NATIONAL

Supplier of high quality Playkote rubber to the Australian market. Our vast range of EPDM rubber, Precoat SBR rubber and associated products are sourced from leading manufacturers and are amongst the best available in the world, proven to withstand the harsh Australian climate and available in a wide range of vibrant colour options. Supplier of high quality synthetic grass, our UV protected turf will outlast harsh weather conditions. Australian agent for Playnetic, interactive outdoor play equipment. Portable Sports Flooring using interlocking tiles for quick drainage.

4 Wills Street, Warragul Vic 3820
1 River Street, Hindmarsh SA 5007
Unit 3/151 Robinson Road, Geebung Qld 4034
1300 PLAYKOTE
sales@australiansurfacingssupplies.com.au
www.australiansurfacingssupplies.com.au



MANUFACTURERS & SUPPLIERS



CALIFORNIA SPORTS SURFACES

NATIONAL

California Sports Surfaces, a member of the ICP Group (USA), manufactures and markets leading acrylic and PU surface brands Plexipave, Rebound Ace, Decoturf and Premier Sports Coatings. From 2007-2019, Plexipave (Plexicushion Prestige) was the Official Surface of the Australian Open, while from 1988-2006 Rebound Ace was the Grand Slam surface of choice. From 1978-2019 the US Open Tennis Championships were played on Decoturf. CSS also specialises in court surface systems for indoor and outdoor netball, basketball, multi-sport/multi-purpose courts, cycle/pedestrian tracks, cricket wickets, portable courts and running tracks along with residential and commercial protective coating projects. CSS' applicators and builders are fully trained and accredited for the supply and installation of their products.

30-32 Assembly Drive, Tullamarine VIC 3043

03 9338 9851

sales-sports@icp-construction.com

www.californiasportssurfaces.com.au



COMBITILE

NATIONAL

Critical fall height of drainage surfacing tiles for aquatic and dry play areas, sports surfaces, playgrounds.

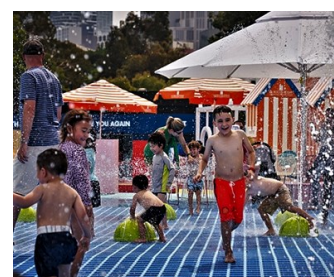
- 100% Australian owned
- 100% Australian manufactured
- 5 year warranty
- Recyclable
- No VOC
- Australian and International Standards approved

56 Tumby Road, Tumby Umbi NSW 2261

0416 268 896

kmillard@combitile.com

www.combitile.com



COOL RUBBER

NATIONAL

Cool Rubber is rapidly becoming a leader in the import and distribution of rubberized playground safety surfacing. We source the best materials so our rubber play surfaces are clean, safe and made to last. Cool Rubber works tirelessly to ensure we adhere to Australian Standards and guidelines for safe public playgrounds. A thorough third-party, laboratory-testing program insures that all products meet the required standards and that quality levels are strictly maintained.

39-45 Vallance Street, St Marys NSW 2760

1300 671 168

info@coolrubber.com.au

www.coolrubber.com.au



ERA POLYMERS

NATIONAL

Era Polymers is an Australian owned producer of polyurethane products. These include PU binders for use in wet pour rubber applications. Different binders can also be used for stone, sand and other aggregates. We also produce coatings for finishes over rubber or hard surfaces, as well as quick-curing polyurea joint sealants and waterproofing membranes.

2-4 Green Street, Banksmeadow NSW 2019

02 9666 3788

erapol@erapol.com.au

www.erapol.com.au



MANUFACTURERS & SUPPLIERS



FIELDTURF AUSTRALIA

NATIONAL

FieldTurf Australia (formerly Grassman) has been a leading manufacturer of synthetic grass in Australia since the late 1970s. FieldTurf is a worldwide leader with more than 20,000 installations across the globe, delivering high-performance artificial turf systems for sports, landscape and commercial applications. By continuously improving our products and paying special attention to our customers' needs and athletes' safety and comfort, FieldTurf continues to be recognized as one of the best and most reliable turf companies in the industry. With products proudly made in NSW, FieldTurf Australia is trusted by some of the most elite associations in the world and in Australia. We are a FIFA Preferred Producer, World Rugby Preferred Producer, FIH Preferred Supplier, but also trusted by ITF Sports & Play, Hockey NSW, and Cricket Australia.

Unit 8A Port Air Industrial Estate
1A Hale Street, Botany NSW 2019
02 9316 7244
info@fieldturfaustralia.com.au
www.fieldturf.com.au



AUSTRALIA

GRAND SLAM SPORTS EQUIPMENT

NATIONAL

For over 25 years, Grand Slam Sports Equipment has manufactured and supplied quality sporting equipment such as indoor and outdoor basketball structures, volleyball, netball, badminton and tennis posts. We also supply a full range of AFL, rugby, soccer, futsal and handball goals which are available in both steel and aluminium. We manufacture sporting nets and draw curtains and provide a full installation service. See website for full product range.

19 Deakin Street, Brendale QLD 4500
07 3205 3388
sales@grand-slam.com.au
www.grand-slam.com.au



HALLIDAY LIGHTING AUSTRALIA

NATIONAL

For more than 60 years, Halliday Lighting have worked with thousands of clients to provide outdoor and indoor sports lighting solutions at every level. From schools and grassroots sports clubs, to universities, professional sports clubs and major stadium installations. Halliday Lighting Australia benefit from the combined experience and knowledge of our international colleagues and offer a complete turnkey solution delivered and supported locally. Quality service is the foundation of all that we do and we pledge to always provide a care-free experience from initial design through to installation, final commissioning and ongoing maintenance. We continually pioneer new innovations and technology through close partnerships with the world's most renowned electrical manufacturers, allowing us to offer a comprehensive range of efficient lighting products for all of our sports clients.

c/- Unit 18, 431 St Kilda Road, Melbourne VIC 3004
info@halliday-lighting.com.au
www.halliday-lighting.com.au



HITECH SPORTS

NATIONAL

HiTech Sports offers a comprehensive service, which includes the design, supply and installation of sporting equipment to client specification. We have over 10 years of experience and innovation providing elite sporting equipment for a large variety of sports, such as Netball, Tennis, Basketball, Volleyball, Badminton, AFL, Rugby League & Union, Football, Futsal, Hockey and more, as well as multi-sport Scoreboards for indoor and outdoor sports. Our extensive product range covers all skill level requirements from basic through to top level competition with International Certification compliance such as HiTech Sports was the official supplier to the 2018 Commonwealth Games Basketball and Volleyball equipment. Proud supplier of FIBA, FIVB, IAAF etc Certified products.

Unit 10, 49 Butterfield Street, Herston QLD 4006
1300 500 314
sales@hitechsports.com.au
www.hitechsports.com.au



MANUFACTURERS & SUPPLIERS



INDUSTRIAL ORGANICS

Industrial Organics is the Australian and New Zealand agent for Fairmont Ecolastic EPDM and Pre-Coloured Rubber Granules. Industrial Organics also supplies Polyurethane binders and various types of cushion rubber. We also provide flexibility and customisation from new colours through to tailoring supply and logistics.

7/12 Viewtech Place, Rowville VIC 3178
03 9755 6066
tim@indorganics.com
www.indorganics.com



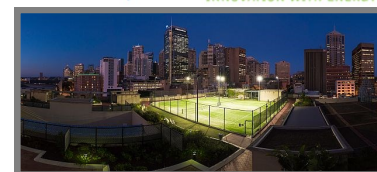
NATIONAL



INNOVATION WITH ENERGY

Innovation With Energy is an Australian owned and run business which offers a suite of products including the latest technology LED lighting, controllers and alternators. IWE specialise in LED floodlights, street lights and high bay lights. Our lights are built to the highest standards, adhering to the stringent IP66 criteria. From a home tennis court, sports oval, netball court, basketball court, soccer pitch, to a competitive level sports stadium.

19 Tepko Road, Terrey Hills NSW 2084
02 9986 2396
jamie.marchenko@iwegroup.com.au
www.iwegroup.com.au



NATIONAL

JASSTECH

Jasstech provide lighting and media solutions for all sports fields, courts and arenas, no matter what the field of play, or the level of play. Jasstech lighting products are designed in Australia and are now being sold extensively in Europe and the Americas. Services include design, supply (including poles), installation and auditing.

141 Logan Road, Woollongabba QLD 4102
1300 665 135
enquiries@jasstech.com.au
www.jasstech.com.au

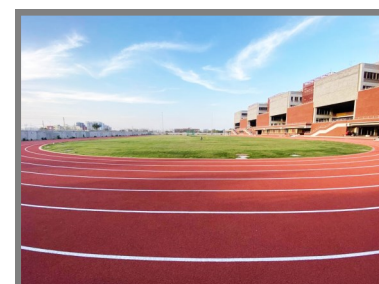


NATIONAL

KDF LTD

KDF is one of the most dynamic and export-oriented Greek companies (currently activated in more than 50 countries in 4 continents), based in UAE and Greece, with production facilities and warehouses in both countries for acrylics and polyurethanes. We are experts in sports/industrial/decorative flooring products and systems, with huge experience in Europe, the Middle East and India as well. We are now market leaders in the Gulf region for sports flooring. KDF, provides certified systems by ITF, WORLD ATHLETICS, EU norms, LNE, LABOSPORT, ISASPORT, to name but a few.

1 Papanikolaou Ave, Thessaloniki 57010 Greece
+30 2310 829598
exports@kdf.gr
www.kdf.gr



NATIONAL

MANUFACTURERS & SUPPLIERS



KELMATT

Kelmatt Australia have been manufacturing tennis court windscreens and sight-screens since 1983 and are considered market leaders in this field with many major installations throughout Australia, including Melbourne Park National Tennis Centre, Sydney International Tennis Centre Homebush, Kooyong Lawn Tennis Club Melbourne and the West Australian Tennis Centre at Burswood WA. Our tennis court windscreens greatly reduce the wind on court for better playing conditions. Privacy screens are used mainly around domestic courts for increased privacy and sight-screens for better ball sighting. Other products include Pole Padding for increased safety on Tennis and Netball Courts, Kindergartens and Football Grounds.

36 Jellico Drive, Scoresby VIC 3179
03 9763 8522
sales@kelmatt.com.au
www.kelmatt.com.au



NATIONAL

MAPEI AUSTRALIA

Mapei is a world leader in the development, manufacture and supply of 'Sports Flooring' products/systems. The innovative 'Mapecoat TNS System' is specifically designed for installing and/or repairing indoor and outdoor Tennis and Multipurpose courts. Mapei manufacture over 1,500 products worldwide which includes adhesives, paints and finishes for the installation of all wall and floor coverings. The 'Sports Systems' product range are a household name when it comes to the installation of indoor/outdoor netball and basketball courts, multi-purpose areas, gyms, swimming pools, athletic tracks and synthetic turf.

180 Viking Drive, Wacol QLD 4076
07 3276 5000
n.cheal@mapei.com.au g.walsh@mapei.com.au
www.mapei.com.au



NATIONAL

OTTER FENCING

Otter Fencing specialise in chain-link fabric fencing and gates – supply only or supply and installation. We manufacture and install a wide range of sports fencing including tennis courts, multi-purpose sports fields, cricket net enclosures, baseball/softball batting cages, baseball and softball high screen back nets, ovals, hockey and soccer pitches. We also install chain-link fabric, tubular and welded mesh fencing and gates to suit a wide variety of industrial and commercial applications such as security, boundary, parks, schools, internal storage cages, safety, factories, gate automation.

12a Kitchen Road, Dandenong VIC 3175
1300 856 833
sales@otterfencing.com.au
www.otterfencing.com.au



VICTORIA

OXLEY NETS

With over 130 years experience in netmaking and design, our netting products and netting installations demonstrate our emphasis on strength, durability and quality. We provide tennis nets and other sporting nets, draw curtains and net posts. We are the supplier of tennis court nets for the Australian Open. Our behind-goal AFL football nets are used at stadiums like the MCG and ANZ Stadium. We manufacture high quality soccer goal nets. Countless councils and institutions have trusted us to create safe and functional sporting environments.

20 Network Drive, Port Melbourne VIC 3207
1300 730 731
info@oxleynets.com.au
www.oxleynets.com.au



NATIONAL

MANUFACTURERS & SUPPLIERS



PACIFIC URETHANES

NATIONAL

Pacific Urethanes is an Australian-owned company specialising in the development and production of Polyurethane Systems for Australian and export markets. We have a team of highly dedicated individuals who work closely with their customers as specialists in their field, applying the most advanced technology to achieve exceptional results.

2-10 Produce Drive, Dandenong South VIC 3175
03 8779 0100
kelly.parker@pacificurethanes.com
www.pacificurethanes.com



PLAY HARD SPORTS EQUIPMENT

NATIONAL

Play Hard Sports Equipment design and manufacture in-stadium, club level and home/recreational sporting equipment for tennis, basketball, rugby, AFL, athletics, soccer, futsal, hockey, badminton, cricket, netball and volleyball. PHS have supplied premium sports equipment for Sydney Olympic Park, Gold Coast Cbus Stadium, Queensland Tennis Centre, Gold Coast Super Sports Centre - Gold Coast Commonwealth Games premier training facility for Athletics, Hockey and Beach Volleyball - West Coast Eagles AFL elite training ovals and Western State Colorado University, USA.

24 Ern Harley Drive, Burleigh Heads QLD 4220
07 5593 4494
email@playhardsports.com.au
www.playhardsports.com.au



PLAYSAFE FENCING

NEW SOUTH WALES

Playsafe Fencing manufactures and installs chain-wire fencing including tennis courts, baseball dugouts, cricket nets, golf screens, all purpose courts, sporting fields and sporting screens. We sell, install and hire fences and fencing materials across Sydney metropolitan area and the greater Sydney regional area. We have also installed major projects in other states of Australia.

24-26 Airds Road, Minto NSW 2566
02 9820 1200
info@playsafefencing.com.au
www.playsafefencing.com.au

Playsafe Fencing
Safety, Security and Service



SMARTLUX

NATIONAL

Smartlux are suppliers of LED and HID lighting, and poles for all sports applications from court to stadium. We provide full turnkey of lighting design, including mast/pole selection. We are the APAC representative for Abacus Lighting Solutions—including base hinge masts, Challenger Luminaires, Orion Carpark Lights and Quartz vandal resistant LED bollards.

33 Perihelion Street, Coorparoo QLD 4151
0450 747 337
craig@smartlux.com.au
www.smartlux.com.au



MANUFACTURERS & SUPPLIERS



SPORTZING COURT CARE

QUEENSLAND/NEW SOUTH WALES/VICTORIA

Sportzing has been supplying tennis product and servicing Australian tennis courts for over 25 years. Our constant observation of tennis nets, tennis posts and winding units inspired us to design and manufacture many of our own products to ensure there is quality to last the distance and also competitively priced. Attention to detail and customer care is our primary focus.

118 North Buderim Boulevard, Buderim QLD 4556
0490 053 733 / 1800 818 894
headoffice@sportzing.com.au
www.sportzing.com.au



SURFACE DESIGNS

NATIONAL

Surface Designs was founded in 2009, a wholesale company for the rubber safety surfacing industry. We are the exclusive importer of Rosehill Polymers rubber granule products for Australia and New Zealand. With Rosehill TPV® the soft fall surface is stable allowing an installation to last for up to ten years and the integrity of the granule allows the surface to stay supple. Rosehill TPV® is made from premium quality virgin polymers, combined with the highest possible UV stabilized pigments so as to retain its colour, even in our harsh Australian climate. Surface Designs also provide Polyurethane Binders to work with the granules.

Unit 12, 1 Jubilee Avenue, Warriewood NSW 2102
02 9986 2445
sales@surfacedesigns.com.au
www.surfacedesigns.com.au



TIGERTURF AUSTRALIA

NATIONAL

TigerTurf, a synthetic turf manufacturer for over 36 years, is one of the world's largest synthetic turf companies. Many of TigerTurf's products have been certified by world sporting bodies, including FIFA, World Rugby, FIH, ITF and World Bowls. As a successful synthetic turf manufacturer, TigerTurf has the experience and expertise to guide you in choosing the best turf for your unique requirements and challenges. TigerTurf is a subsidiary of TenCate Grass, a multi-national company and world market leader in the production of quality synthetic grass fibres and artificial turf components.

14 Latitude Boulevard, Thomastown VIC 3074
03 9464 5052
t.declase@tigerturf.com
www.tigerturf.com



MANUFACTURERS & SUPPLIERS



TROCELLEN

NATIONAL

Trocellen S.E.A Sdn. Bhd. manufacture and supply ProGame artificial turf SHOCK PAD for sport fields, playgrounds, landscape and gardening. ProGame shock pads fulfill the necessary safety requirements for sports or leisure areas and offer the best conditions for high performance training or leisure activities. ProGame contributes to easy and fast installation, stability of the field, constant characteristics across the whole installed area and strengthening the level of user safety and protection in the field. ProGame meet the requirements of international sports federations of football, hockey, baseball, rugby, golf and American football.

Lot 2213, Batu 9, Kebun Baru, Jalan Kasawari, 42500 Telok Panglima Garang
Selangor Malaysia
+603 3122 1213
sales@trocellen.com.my
www.trocellen.com.my



PROGAME
by TROCELLEN

TYRECYCLE

NATIONAL

At Tyrecycle, we're committed to eliminating the export of whole-baled tyres. As Australia's largest producer of recycled rubber, our tyres aren't sent offshore or to landfill. That's why we're grabbing the attention of companies both locally and internationally as we continue to develop our environmentally focused innovation to create a cleaner tomorrow, right here in Australia. As part of the highly regarded integrated resource recovery group ResourceCo, we're continually discovering new applications for waste rubber in our quest to decrease the number of tyres entering waste streams and ending up in landfill. We manufacture and supply rubber granules, buffings and powders for use in playground surfaces, sporting surfaces, infill for synthetic and natural turf, equestrian surfaces and more.

Private Bag 48, Somerton VIC 3062 Australia
03 8339 3555
sales@tyrecycle.com.au
www.tyrecycle.com.au



URBAN TURF SOLUTIONS

NATIONAL

There are many different synthetic sporting surfaces available in the market, but Urban Turf Solutions has the edge with its extensive experience in manufacturing quality sporting surfaces. We have developed surfaces for all sports, all budgets and all environments. Visit our website for the full range of sporting surfaces.

12 Telford Circuit, Yatala QLD 4207
07 3382 7260
info@urbanturfsolutions.com.au
www.urbanturfsolutions.com.au



PROFESSIONAL SERVICES



106 ARCHITECTS

INTERNATIONAL

106 Architects is an award-winning community and sport-specialist architecture and design practice dedicated to connecting and strengthening communities across Australia and New Zealand. Lead by Olympian and Commonwealth Games Silver Medallist Dion Gosling, the 106 Architects team have all the skills and capability required to help you take your project from concept to final occupation. At 106 Architects, we live for sports, leisure, and community facilities – having been focused and immersed in fields, courts, tracks, jumps, indoor and outdoor play spaces – sport infrastructure – all our life.

134a Sydney Road, Brunswick VIC 3041
0450 463 070
studio@106architects.com
www.106architects.com



ACOUSTO-SCAN

NATIONAL

Acousto-Scan is an ISO/IEC 17205 Laboratory that specialises in testing sporting and playground surfaces. Their accreditations include NATA (National Association of Testing Authorities, Australia), FIFA (Federation Internationale de Football Association), WR (World Rugby Board), AFL (Australian Football League), CA (Cricket Australia), ITF (International Tennis Federation), FIH (International Hockey Federation). They are an ISSS Scientific Body Member. Acousto-Scan has been directly involved with the Olympics, Commonwealth Games, Asian Games, Pacific Games, FIFA gold projects and World Cups.

44/59 Halstead Street, South Hurstville NSW 2221
02 8385 4872
admin@acoustoscan.com.au
www.acoustoscan.com.au



DALTON CONSULTING ENGINEERS

NATIONAL

Dalton Consulting Engineers are experts in the design and project management of sporting projects and related infrastructure. DCE prides itself on combining the engineering and financial imperatives for sports facilities with the necessary infrastructure requirements. Drawing on extensive knowledge and experience in the delivery of sporting projects, DCE provides expert services and advice in the following key areas: master planning, 3d animations for concept design, synthetic and turf sports fields, athletic tracks, thoroughbred racing facilities, water saving initiatives, integrated water cycle management, detailed design, project management, construction management.

Level 3, 678 Victoria Street, Richmond VIC 3121
03 9813 7400
info@dceng.com.au
www.dceng.com.au



IDWALA

VICTORIA

iDwala is known as the Community Sports Surface Specialist offering the highest quality designs and technical expertise to Councils, Schools and Sporting Clubs looking to create sporting facilities that are unique, affordable and innovative so the whole community can enjoy them for years to come. Whether it be for netball, tennis, basketball, cricket, athletics, hockey, volleyball, futsal, soccer, rugby, pickleball or multisport facilities, iDwala can help turn your vision into a reality.

Gisborne VIC 3437
0409 529 689
george.devenish@idwala.com.au
www.idwala.com.au



PROFESSIONAL SERVICES

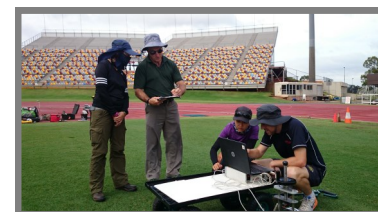


LABOSPORT AUSTRALASIA

NATIONAL

Labosport is the world's largest sports surfaces testing house, with over 150 staff in 12 countries. The Australian-based arm of Labosport (Labosport Aust.) provides independent accredited performance testing for all leading sports organisations, including FIFA, WR, FIH, IAAF, AFL, World Bowls and ITF. We also provide independent research, consultancy and design on a wide range of sports surfaces, whether they be synthetic, hybrid or natural turf.

52 Raby Esplanade, Ormiston QLD 4160
0406 558 120
admin.au@labosport.com
www.labosport.com



PEAKURBAN (VIC)

NATIONAL

PeakUrban are specialists in the master-planning, design and construction surveillance of sports and racing facilities. We have the technical expertise, resources, passion and enthusiasm to plan and engineer for life!

PeakUrban's engineering experience within the sports sector covers a vast range of sporting facilities and codes. Whether it is an athletics track, acrylic courts, natural or synthetic sports field, PeakUrban has you covered.

Level 1, 1-5 Nantilla Road, Notting Hill VIC 3168
03 9562 7424
brent.gordon@peakurban.com.au
www.peakurban.com.au



PLAYTEST

NATIONAL

Playtest is an independent Surface Testing Company, we specialise in the testing and assessment of all playground surfaces. Our organisation is an independent, field testing and laboratory testing service. We have the capabilities to deal with any playground surface testing, from Critical Fall Height testing to failure investigation of the rubber surfaces. Our services are currently utilised by councils, child care centres, independent schools, playground companies, surface companies and leisure management companies. Many of the surface construction companies draw upon our experience and knowledge in order to ensure the quality and durability of their products. (e.g. UV testing, TGA, DSC, SBR rubber, EPDM, TPV, TPE).

44/59 Halstead Street, South Hurstville NSW 2221
1300 88 4949
grant@playtest.com.au
www.playtest.com.au



SMART CONNECTION CONSULTANCY

NATIONAL

Martin Sheppard, Managing Director of Smart Connection Consultancy, has worked since 2008 supporting clients with feasibility studies, business cases and the procurement of synthetic sports surfaces, so that the technology can grow participation in active recreation and community sport. Recognised as one of Australia's leading thinkers and influencers on the use of synthetic surface technology, he is also the technical adviser to the FFA, NRL and Rugby Australia on synthetic surfaces, in addition to working directly with FIFA, World Rugby and FIH.

Suite 40, 204-218 Dryburgh Street, North Melbourne VIC 3051
03 9421 0133
martins@smartconnection.net.au
www.smartconnection.net.au



PROFESSIONAL SERVICES



SPORTENG

NATIONAL

SPORTENG specialises in the planning, design and construction inspection of Fields of Play for all sports. Blending engineering with specialist knowledge gained from working closely with sport governing bodies, stadium curators, sport planners and architects, SPORTENG provides leading-edge technical advice for all forms of Field of Play. Pivotal to the SPORTENG approach is our understanding of the specific design requirements for a Field of Play and our appreciation of how facilities will be constructed, operated and maintained. Our specialist team, the largest in Australia, brings every skill to the table to ensure we can deliver the highest quality and most appropriate design option for clients.

SPORTENG™

206 Camberwell Road, Hawthorn East VIC 3123
03 9939 6355
Jarrod.Hill@sporteng.com.au
www.sporteng.com.au



AFFILIATE MEMBERS

AUSTRALIA



AUSTRALIAN LEISURE MANAGEMENT (ALM)

NATIONAL

Australasian Leisure Management magazine is SAPIA's 'Official Publication', with all SAPIA members receiving a copy of the printed magazine (mailed six times a year) as a membership benefit. SAPIA members can also receive the bi-weekly ALM e-newsletter with the latest news from across the industry by signing up at www.ausleisure.com.au/newsletter/. Australasian Leisure Management is a business magazine aimed at those who work and manage in all areas of the leisure industry, with sport, venues, play, surfaces and safety key areas of coverage. It invites news and content from SAPIA members for both the magazine and website.

PO Box 478, Collaroy NSW 2097
02 9970 8322
leisure@ausleisure.com.au
www.ausleisure.com.au



AUSTRALASIAN WIRE INDUSTRY ASSOCIATION (AWIA)

NATIONAL

The AWIA is a non-profit organisation formed by companies involved in the manufacturing sector to support the long term development and prosperity of the wire industry throughout the Australian, New Zealand, Pacific and South East Asian region. Member companies are involved in all aspects of the industry from wire manufacturers and raw material suppliers, to wire products manufacturers, machinery suppliers and ancillary service providers.

PO Box 1210G, Greythorn Vic 3104
1300 942 500
richard@wireassociation.com.au
www.wireassociation.org.au



AUSTRALIAN SPORTS FOUNDATION (ASF)

NATIONAL

The Australian Sports Foundation helps clubs and organisations as well as individual athletes to fundraise for sport. Fundraising4Sport (F4S) is the main fundraising program whereby each project is set up with its very own personalised project page and secure donation platform which can be shared with communities to raise awareness. The ASF is uniquely positioned to enable philanthropic support to Australian sport by providing tax deductibility for donations made to projects signed up. This means that donations of \$2 or more made through the Australian Sports Foundation allow donors to claim a tax deduction.

Leverrier Street, Bruce ACT 2617
02 5112 0990
ryan.holloway@asf.org.au
www.asf.org.au



TENNIS QUEENSLAND—COURT TECH

QUEENSLAND

Tennis Queensland—Court Tech offers a consultancy, advisory and project management service to our affiliated tennis clubs, other sporting bodies, schools, universities, LGA's and other levels of government.

190 King Arthur Terrace, Tennyson QLD 4105
07 3120 7908
m.blomer@tennis.com.au
www.tennis.com.au/qld



AFFILIATE MEMBERS INTERNATIONAL



AMERICAN SPORTS BUILDERS ASSOCIATION (ASBA)

U.S.A.

ASBA is a national organization for builders, designers and suppliers of materials for tennis courts, running tracks, natural and synthetic turf fields, indoor and outdoor synthetic sports surfaces. It is recognized as a centralized source for technical and consumer-oriented information.

2331 Rock Spring Road, Forest Hill MD 21050
United States of America
(USA) 866-501-ASBA (2722)
info@sportsbuilders.org
www.sportsbuilders.org



SPORTS AND PLAY CONSTRUCTION ASSOCIATION (SAPCA)

U.K.

The Sports and Play Construction Association (SAPCA) is the recognised trade association for the sports and play construction industry in the United Kingdom. Its role is to foster excellence, professionalism and continuous improvement throughout the industry in order to provide the high quality facilities needed at all levels of sport, physical activity and play. SAPCA membership signifies professional competence and performance which directly benefits customers that choose member companies for their projects.

The Hexangle, Stoneleigh Park, Warwickshire UK CV8 2LG
United Kingdom
(UK) +44 24 7641 6316
info@sapca.org.uk
www.sapca.org.uk



SYNTHETIC TURF COUNCIL

INTERNATIONAL

Founded in 2003, The Synthetic Turf Council is a non-profit trade association for the synthetic turf industry. The STC's vision is to improve the world through synthetic turf by serving as the global forum to promote, develop, grow and advocate for the synthetic turf industry. STC serves as a trusted source and advisor to the industry through a collective and unified voice. The STC ensures industry excellence through guidelines, certification and education and networking. STC promotes industry growth through targeted outreach and recognition.

2331 Rock Spring Road, Forest Hill, Maryland 21050
United States of America
(USA) +1 443-640-1067
office@syntheticturfcouncil.org
www.syntheticturfcouncil.org



HONORARY MEMBERS



J.T. DAVIES

NEW SOUTH WALES

Jack Davies, a Sydney-based consultant structural engineer, has specialised in tennis court and sports field design and construction for over 40 years. Jack was a good tennis player, squash player and cricketer in his own right, and was a consultant to Tennis NSW for many years.

DR DAVID EAGER

NEW SOUTH WALES

Professor Eager represents Australia on ISO/TC 83 Sports and Recreational Equipment. He is an invited technical observer on the European Union Technical Committee CEN/TC 136/SC 1 Children's Playground Equipment and Surfacing. David's primary research is in the area of injury prevention by applying risk engineering and technological interventions to eliminate mortalities and reduce the likelihood and severity of injuries. He is also involved in the human factors research within the UTS Research Centre for Intelligent Mechatronic Systems that is conducting research into the physiological and psychological aspects of human-machine and human-environment interaction. David is currently investigating improved techniques and parameters for the measurement of material properties for attenuating surfacing within children's play spaces with a view to reducing the severity and frequency of injuries associated with falls. He is also conducting research into the characterization of trampoline performance.

GEORGE APTE

VICTORIA

George Apted is a Melbourne-based consulting engineer who has provided Association members with many years of engineering advice, particularly with updates to the Sports Contractors Association's Guide Specifications for Tennis Court Construction.

MAURICE PHILP

QUEENSLAND

Maurice Philp, formerly President of Tennis Queensland from 1998-2004, is a retired Specialist Consulting Civil Engineer who assisted a variety of private, semi-government and government clients on a wide range of projects from small residential estates to multi-story commercial buildings and industrial and mine developments. Throughout his career, Maurice provided advice on matters covering the complete range of geotechnical engineering from investigation and design stages of projects through construction to performance evaluation during project life. Maurice has been acknowledged by Tennis Queensland as the instigator of much change and was credited with being primarily responsible for developing and delivering professional governance within that organisation. He was a member of the Technical Services Advisory Group that published the first edition of Tennis Queensland's Technical Manual for the Design, Construction and Maintenance of Tennis Facilities. It was Maurice's love of tennis that created his solid connection to the game, the tennis fraternity and to our mutual cause which champions good court construction processes.

BOARD OF DIRECTORS 2021

Mark Edmondson was appointed to the Board in 2000 and has served as SAPIA President since 2004. Mark is a former elite tennis player, winning six grand slam tournaments, including the Australian Open. Since 1992, Mark has been managing director of All Grass Sports Surfaces, a company involved in sports court and sports field construction, surfacing and maintenance. In that time, he has overseen the construction of over 1,500 tennis courts and sports facilities, both domestic and commercial, throughout Sydney and country NSW and the ACT.

Ross Jordin was elected to the Board in 2001. He has been a part of the sports construction industry for over 40 years, initially as a sub-contractor and later as a tennis court builder. Through his businesses Jordin Sports Constructions, Allsports Constructions and Centre Court Constructions, he has been involved in all elements of sports construction and leisure-time requirements, including earthworks, retaining walls, dynamic and concrete base construction, fencing, lighting, accessories and general landscape installations.

Tim Loder was elected to the Board in 2009. Tim is the owner and managing director of Oxley Nets which has been a leading manufacturer of netting in Australia for over 120 years. Oxley Nets designs and services all types of sports and industrial netting installations, including nets for tennis, cricket, AFL, rugby, soccer, futsal, golf, softball and baseball. They also have a range of netting for playgrounds including climbing nets and bridge nets.

Malcolm Parkes was elected to the Board in 2014. Malcolm has been involved in the construction industry internationally for over 40 years. He has a wealth of experience in most facets of building, latterly with sports courts and complexes, along with sports tracks and fields and other turnkey construction projects. Malcolm is Managing Director Australia, California Sports Surfaces, a member of ICP Group (manufacturers of Plexipave, Rebound Ace Sports and Premier Sports). Malcolm was appointed SAPIA Vice-President in 2020.

Grant Humphreys was elected to the Board in 2015. As director of sports testing institute AcoustoScan, Grant travels within Australasia and around the world testing sporting surfaces to standards set by FIFA, IRB, FIH, AFL/CU and ITF. He is a member of a number of technical and Standards steering committees and has years of experience in the testing and performance of synthetic sport surfaces.

Jim Tritt was elected to the SAPIA Board in 2016. He started his career with APT USA in 1995 as a research chemist, after graduating with degrees in chemistry and biology from Ohio Wesleyan University. Jim has extensive knowledge in the design, manufacture and distribution of synthetic turf systems, including elastic layers, infill materials and adhesives. He is also experienced in the development of polyurethane coatings with a particular emphasis on sports applications including athletic tracks, tennis courts, gymnasium floors and protective coatings for concrete. After several years as Director of Operations at APT Asia Pacific, Jim was promoted in 2017 to Value Chain Manager PU Applications for SportGroup, with focus to optimise all SportGroup polyurethane, acrylic and rubber production operations. In 2019, he accepted the role of Chief Operations Officer ("COO") for Sport Group Asia Pacific, responsible for the day to day operations of APT Asia Pacific, in addition to his role in overseeing the company's Malaysian operations.

Mark Weber was elected to the SAPIA Board in 2016. After an early career in commercial construction and project management, Mark began working in 1991 on the development and commercialisation of recycled rubber based impact systems specifically for playground usage, and was soon producing for Australian and international markets. He is a specialist in quality, compliant installation of safety surfaces for playgrounds, acrylic sports court surfaces and high end athletics track surfaces. Mark is a director of Surfacing Contractors Australia and Australian Surfacing Supplies.

Mark Cunningham was elected to the Board in 2016. Mark established his company Synthetic Grass and Rubber Surfaces Australia on Sydney's northern beaches in 1994. His company provides synthetic grass and rubber surfacing to schools, childcare centres, playgrounds and sporting areas. With Mark's extensive knowledge of his products and the industry he has designed a range of synthetic grass that is suitable for any budget and is ideal for the Australian climate. The rubber surfaces are non-toxic, anti-slip and comply with soft fall safety requirements.

Darren Scanlan was elected to the SAPIA Board in 2020. Darren completed his Landscaping Apprenticeship in 1988 and spent his early career as a self-employed contractor, specialising in brick paving and swimming pool construction. After a period in sales for a sporting goods importer he came back to the construction industry, installing synthetic grass into day-care centres and tennis courts. In the early 2000's his laser grading business was contract building and laying synthetic grass tennis courts for various Victorian tennis court companies. Darren commenced as a sub-contractor for Grassports Australia (En Tout Cas) in 2005; in 2010 he joined the team as Project Manager and was promoted to General Manager in 2013. Grassports has gone on to build hundreds of school yards and sports fields including FIFA soccer, FIH Hockey and AFL/Cricket Australia facilities.

Arun Kosh was elected to the SAPIA Board in 2020. He is the General Manager of the Queensland division of Surfacing Contractors Australia. SCA specialises in quality, compliant installation of safety surfaces for playgrounds, acrylic and athletic surfaces. A background in landscape design and construction led to Arun working in the commercial playground industry before joining SCA in 2013. Arun has worked on projects in the UK, the Middle East and Asia over his 25 years in the industry. This varied and challenging work in the fields of play and recreation means that he has a wealth of knowledge and experience that make him an effective advocate for the industry.



SPORTS & PLAY

INDUSTRY ASSOCIATION LIMITED

