

SPORTS & PLAY

INDUSTRY ASSOCIATION LIMITED

MEMBER DIRECTORY

JUNE 2025



The Industry Peak Body For
SPORTS, PLAY & RECREATION CONSTRUCTION IN AUSTRALASIA
Builders & Installers · Manufacturers & Suppliers · Professional Services
www.sapia.org.au

OUR HISTORY



The **SPORTS & PLAY INDUSTRY ASSOCIATION (SAPIA)** is the peak industry body for sports, play and recreation construction in Australasia. Our members are specialists in the areas of design, construction, installation, maintenance, manufacture, supply and testing of sports and play spaces, both domestic and commercial.

SAPIA is a not-for-profit association, established to promote the best construction standards and business practices for the benefit of both members and their customers, as well as to contribute to the safe sporting pleasure of participants who use facilities constructed and/or serviced by members of SAPIA. Our Board of Directors is made up of individuals who are leaders in their fields, who volunteer their services for the benefit of the association and the industry as a whole.

Formed in 2000, we were initially known as the Tennis Court & Sports Field Builders Association of Australasia. We changed our name to the Sports Contractors Association in 2004 as our membership expanded to encompass not only builders but also sports equipment suppliers and professional consultants. In 2016, with the further broadening of our membership to include specialist playground contractors and suppliers, the association rebranded as the Sports & Play Industry Association.

At the time of printing (June 2025) SAPIA has 130 members: builders, sub-contractors, manufacturers, suppliers and professional consultants. Our contractor members have expertise in building and surfacing all types of sports and recreation areas, including tennis and multi-sport courts, basketball and netball courts, pickleball, padel and squash courts, bowling greens, golf courses, hockey fields, athletic tracks, equestrian arenas, soccer and futsal fields, cricket pitches and nets, baseball fields, rugby and AFL fields, fitness areas and playgrounds, skate parks and velodromes. Other members manufacture, supply and install sports flood lighting, fencing, all types of nets, net and goal posts, basketball towers, safety padding, shade structures and shade sails, synthetic grass and acrylic surfacing materials, playground soft fall as well as ancillary products. Consultants provide professional and technical services, including design, engineering, advice and testing to Australian and international standards, as well as international logistics.

SAPIA members must comply with strict membership criteria and abide by the Association's Code of Ethics and Constitution. They are kept up to date with the latest advances in sporting surfaces, construction and installation techniques and equipment technology. SAPIA is represented on Standards Committees in sports and playground surfacing and equipment, lighting and fencing.

The following pages contain profiles and contact details provided by each of our members, current at time of printing. This Directory is updated online throughout the year as new members join, so please visit the SAPIA website www.sapia.org.au for up-to-date membership listings. SAPIA's membership categories include:

- **Principal Contractors**, who have years of experience in the full construction of sports courts, sports fields, play spaces or recreational areas, and demonstrate standards and values acceptable to the Board.
- **Surfacing Contractors** who specialise in surfacing-only services to principal contractor members or other sports and recreation contractors.
- **Associate Contractors** who are suppliers of associated goods and services (e.g. fencing or sports lighting installers, earthworks contractors, concreters and block layers, maintenance personnel) to the sports, play and recreation contracting industry.
- **Professional Services** members include professional consultants: designers, engineers, architects and testing labs etc. who specialise in the sports, play and recreation industry.
- **Manufacturers & Suppliers** of products related to the sports, playground and recreation industry, including but not limited to sports and play equipment, synthetic turf, acrylic surfacing, fencing materials, quarry materials, sports lighting, safety padding etc.
- **Affiliate Members** such as sports governing bodies, reciprocal peak bodies, councils, fund-raisers and honorary members involved with the sports, play and recreation construction industry.

For project advice or quotations, you may choose to communicate directly with the SAPIA members listed on the following pages, or else contact the SAPIA Office by emailing office@sapia.org.au or by phoning **1800 208 202** (Australia) or **0800 208 202** (New Zealand). When more than one quotation is required, we can quickly enquire of our members who have the skills to quote on your project to ascertain who is available.

OUR AIMS & OBJECTIVES

As the recognised Australasian peak body, the Sports & Play Industry Association fosters excellence, professionalism and continuous improvement throughout the sports, recreation and playground construction industry, in order to provide the high quality facilities necessary for the success and safety of sports and play in our region.

Customers and decision-makers can partner with SAPIA in upholding the highest quality standards by ensuring that the contractors with whom they engage are SAPIA Members. This edition of our Member Directory has been published in June 2025. The publication is updated throughout the year and the most recent edition can be viewed by visiting our website www.sapia.org.au

SAPIA'S AIMS AND OBJECTIVES

- To promote high standards of design, construction and workmanship for sports and play facilities in Australasia.
- To regulate the industry through the vetting and monitoring of SAPIA members.
- To provide and support training and education for the industry's workforce.
- To participate fully in the development of Australian and other Standards for the construction and safe performance of sports, play and recreational facilities, for all levels of ability.
- To publish Codes of Practice relevant to the sports and playground construction industry which may be used as a reference for specifiers and a tool for members.
- To liaise closely with governing bodies for individual sports, as well as play and recreation organisations, both nationally and internationally.
- To encourage the use of new technology and innovation in the design, construction and recycling of sports and play facilities.
- To provide a strong voice for the sports, leisure and playground industry within Australasia.

The SAPIA website is a source of valuable information for anyone involved in the development of sports and play facilities. Visit www.sapia.org.au for Technical Guidance, Exhibitions & Events, Industry Awards winners, our searchable Membership Database and more. Follow our Facebook and LinkedIn pages to view members' projects.



FURTHER INFORMATION

The Sports & Play Industry Association operates through its own full-time administration. For further information, including technical advice, recommended contractors or suppliers for your projects, or to enquire about becoming a SAPIA member, please contact us:

Sports & Play Industry Association
PO Box 118, Mona Vale NSW 1660
Australia

Telephone: 1800 208 202 (freecall AUSTRALIA)
Telephone: 0800 208 202 (freecall NEW ZEALAND)

E-mail: office@sapia.org.au
Web: www.sapia.org.au

PRINCIPAL CONTRACTORS DIVISION

QUEENSLAND

All Sport Projects • Bioscapes Group • Centre Court Constructions • Champion Grass by Premier Grass • Court Craft
Custom Court Constructions • Grassports Queensland • Jordin Sports Constructions • KCL Sports
Landscape Solutions • Premier Sports & Leisure • Sports Build • Sports Construction Group
Surfacing Contractors Australia • The Sports Court Builders

NEW SOUTH WALES

Centre Court Constructions • Champion Grass by Premier Grass • Court Craft • Dynamic Sports Facilities Australia
Gauci Civil Contracting • Glooloo Surfacing • KCL Sports • Landscape Solutions • Luxury Synthetic Grass
Premier Sports & Leisure • Riverina Sporting Services • Sports Build • Sportszone Group
Synthetic Grass & Rubber Surfaces • Synthetic Padel Group • Synthetic Sports Group • TigerTurf Australia • Turf One

VICTORIA

A.S. Lodge • All Seasons Synthetic Turf • AMH Civil • Bioscapes Group • Budget Tennis Courts
Champion Grass by Premier Grass • Easy Turf Australia • Grassports Australia • KCL Sports • Landscape Solutions
Pro Court Surfacing & Construction • SJM Turf & Civil • SM Cantwell Pools & Courts • Sports Build
Spot On Synthetics • Synthetic Padel Group • TigerTurf Australia • Turf One • Ultracourts

TASMANIA

Blacktac • TigerTurf Australia

SOUTH AUSTRALIA

Boag Construction • J & C Sports Surfaces • KCL Sports • Limonta Sport Australia • Sports Build
Surfacing Contractors Australia • Synthetic Padel Group • TigerTurf Australia

WESTERN AUSTRALIA

All Seasons Synthetic Turf • Astro Synthetic Surfaces • Evergreen Synthetic Grass • Green Planet Grass
Sport and Recreation Surfaces • Sports Surfaces • Synthetic Padel Group • TigerTurf Australia
West Coast Sporting Surfaces

NORTHERN TERRITORY

Hardy Landscaping • NT Shade • Synthetic Padel Group • TigerTurf Australia

SURFACING CONTRACTORS DIVISION

QUEENSLAND

Pro One Playscapes • Surface Pro Group

NEW SOUTH WALES/A.C.T.

Bruce's Playgrounds • Courtmaster Sports Surfacing • JL Turf Group • Malcolm Kessell • Maxwood Technology

VICTORIA

B&T Pool Painting & Court Surfacing • Matchpoint Systems • RubberTough Industries • Rubberworx
Sports Courts Victoria

WESTERN AUSTRALIA

Perth Playground & Rubber • Retech Rubber

ASSOCIATE CONTRACTORS DIVISION

Courtcare • Genesis Concreting • Light Up Sports • MPC Fencing • Play-safe Services
Precision Sports Lighting + Electrical • Pure Turf Australia • Sports Clean • Sportzing Court Care Services
The Fence Consultant

MANUFACTURERS & SUPPLIERS DIVISION

A1 Rubber • Abel Sports • AFN Sports Equipment • Allsports Products • APT Asia Pacific
Australian Surfacing Supplies • California Sports Surfaces • CombiTile • Era Polymers • Felton Industries
FieldTurf Australia • Geofabrics Australia • Grand Slam Sports Equipment • GreenSet Worldwide
Halliday Lighting Australia • HiTech Sports • Industrial Organics IQL Australia • Jasstech • Kelmatt Australia
Kings Sports • Madison Sport • Mapei Australia • Net World Sports • Otter Fencing • Oxley Nets • Pacific Urethanes
Padel 360 • Play Hard Sports Equipment • Playsafe Fencing • Smartlux • Sportzing Court Care Services
Surface Designs • Synergy In Turf • TigerTurf Australia • Tyrecycle • Urban Turf Solutions

PROFESSIONAL SERVICES DIVISION

106 Architects • Acousto-scan • Dalton Consulting Engineers • iDwala • Labosport • Mark Edmondson Consulting
McHugh & Eastwood (Aust) • Playground Safety Inspectors Australia • Playtest • Smart Connection Consultancy
SportEng • Sports Design Group

AFFILIATE & HONORARY MEMBERS

American Sports Builders Association • Australasian Wire Industry Association • Australian Leisure Management
Australian Sports Foundation • EMEA Synthetic Turf Council • Sports & Play Construction Association
Synthetic Turf Council • Ted Stubbersfield • Tennis Queensland-Court Tech • J.T. Davies (honorary)
Prof David Eager (honorary) • Maurice Philp (honorary) • Joe Wadkins (honorary)

MEMBERS BY SPECIALTY

SPORTS COURTS

All Sport Projects • A.S. Lodge • B&T Pool Painting & Court Surfacing • Blacktac • Bioscapes Group
Boag Construction • Budget Tennis Courts • Centre Court Constructions • Court Craft • Courtmaster Sports Surfacing
Custom Court Constructions • Dynamic Sports Facilities Australia • Easy Turf Australia • Gauci Civil Contracting
Glooloo Surfacing • Grassports Australia • Grassports Queensland • J & C Sports Surfaces • JL Turf Group
Jordin Sports Constructions • Landscape Solutions • Limonta Sport Australia • Luxury Synthetic Grass
Malcolm Kessell • Matchpoint Systems • Maxwood Technology • NT Shade • Premier Sports & Leisure
Pro Court Surfacing and Construction • Riverina Sporting Services • SM Cantwell Pools & Courts
Sport and Recreation Surfaces • Sports Build • Sports Construction Group • Sports Courts Victoria • Sports Surfaces
Sportszone Group • Spot On Synthetics • Surface Pro Group • Surfacing Contractors Australia
Synthetic Grass & Rubber Surfaces • Synthetic Padel Group • Synthetic Sports Group • The Sports Court Builders
TigerTurf Australia • Turf One • Ultracourts • West Coast Sporting Surfaces

SPORTS FIELDS

A.S. Lodge • Bioscapes Group • Centre Court Constructions • Champion Grass by Premier Grass • Court Craft
Easy Turf Australia • Gauci Civil Contracting • Grassports Australia • Grassports Queensland • JL Turf Group
Jordin Sports Constructions • Landscape Solutions • Limonta Sport Australia • Luxury Synthetic Grass
SJM Turf & Civil • Sport and Recreation Surfaces • Sportszone Group • Sports Surfaces • Spot On Synthetics
Synthetic Grass & Rubber Surfaces • Synthetic Sports Group • TigerTurf Australia • Turf One • Ultracourts

BOWLING GREENS

Bioscapes Group • Custom Court Constructions • KCL Sports • Sports Build • Sportszone Group
Synthetic Sports Group • TigerTurf Australia

PLAY SPACES

Astro Synthetic Surfaces • Bruce's Playgrounds • Gauci Civil Contracting • Glooloo Surfacing • Hardy Landscaping
Landscape Solutions • Luxury Synthetic Grass • NT Shade • Perth Playground & Rubber • Play-safe Services
Pro One Playscapes • Retech Rubber • RubberTough Industries • Rubberworx • Surface Pro Group
Surfacing Contractors Australia • Synthetic Grass & Rubber Surfaces • TigerTurf Australia

SYNTHETIC GRASS LANDSCAPING

All Seasons Synthetic Turf • All Sport Projects • Astro Synthetic Surfaces • Bruce's Playgrounds
Centre Court Constructions • Custom Court Constructions • Champion Grass by Premier Grass
Evergreen Synthetic Grass • Glooloo Surfacing • Green Planet Grass • JL Turf Group • Jordin Sports Constructions
Landscape Solutions • Luxury Synthetic Grass • Malcolm Kessell • Pro One Playscapes
Sport and Recreation Surfaces • Sports Surfaces • Spot On Synthetics • Synthetic Grass & Rubber Surfaces
Synthetic Sports Group • TigerTurf Australia

FENCING CONTRACTORS

All Sport Projects • MPC Fencing • Otter Fencing • Playsafe Fencing • Pro Court Surfacing & Construction
The Fence Consultant • Ultracourts

LIGHTING CONTRACTORS

Halliday Lighting Australia • IQL Australia • Jasstech • Light Up Sports • Precision Sports Lighting + Electrical • Smartlux

SPORTS & PLAY EQUIPMENT SUPPLY

Abel Sports • AFN Sports Equipment • Allsports Products • Australian Surfacing Supplies
Grand Slam Sports Equipment • HiTech Sports • Kings Sports • Madison Sport • Net World Sports • Oxley Nets
Padel 360 • Play Hard Sports Equipment • Play-safe Services

ACCESSORIES

Allsports Products • Felton Industries • Kelmatt Australia • Madison Sport • Oxley Nets • Play-safe Services

MAINTENANCE

Astro Synthetic Surfaces • Courtcare • Malcolm Kessell • Play-safe Services • Pure Turf Australia • Retech Rubber
Sport and Recreation Surfaces • Sports Clean • Sports Surfaces • Sportzing Court Care Services
Synthetic Grass & Rubber Surfaces • TigerTurf Australia • Turf One

BASEWORKS & CIVIL

AMH Civil • Gauci Civil Contracting • Genesis Concreting • Geofabrics Australia • SJM Turf & Civil • Turf One

ACRYLIC SURFACE MANUFACTURE

APT Asia Pacific • Australian Surfacing Supplies • California Sports Surfaces • Era Polymers
GreenSet Worldwide • Mapei Australia • Pacific Urethanes

SYNTHETIC GRASS MANUFACTURE

APT Asia Pacific • FieldTurf Australia • Synergy In Turf • TigerTurf Australia • Urban Turf Solutions

RUBBER SURFACE MANUFACTURE

A1 Rubber • APT Asia Pacific • Australian Surfacing Supplies • Combitile • Era Polymers
Industrial Organics • Pacific Urethanes • Surface Designs • Tyrecycle

DESIGN, ENGINEERING, TESTING, CONSULTING & LOGISTICS

Acousto-scan • AMH Civil • Dalton Consulting Engineers • iDwala • Labosport • Mark Edmondson Consulting
McHugh & Eastwood (Aust) • Playground Safety Inspectors Australia • Play-safe Services • Playtest
Smart Connection Consultancy • SportEng • Sports Design Group

INDEX

INDEX TO SAPIA MEMBER DIRECTORY

PAGES

CONTRACTORS

QUEENSLAND	7 – 11
NEW SOUTH WALES/ACT	12 – 19
VICTORIA	20 – 27
TASMANIA	27
SOUTH AUSTRALIA	28 – 30
WESTERN AUSTRALIA	31 – 33
NORTHERN TERRITORY	34

<u>MANUFACTURERS & SUPPLIERS</u>	35 – 44
---	---------

<u>PROFESSIONAL SERVICES & CONSULTANTS</u>	45 – 47
---	---------

<u>AFFILIATE MEMBERS—AUSTRALIA</u>	48
---	----

<u>AFFILIATE MEMBERS—INTERNATIONAL</u>	49
---	----

<u>HONORARY MEMBERS</u>	50
--------------------------------------	----

<u>TECHNICAL RESOURCES</u>	51
---	----

<u>BOARD OF DIRECTORS 2025</u>	52
---	----

<u>NATIONAL CONFERENCE 2025</u>	53
--	----

CONTRACTORS

QUEENSLAND



ALL SPORT PROJECTS

PRINCIPAL CONTRACTOR

At All Sport Projects our passion is taking your sports court dream from a concept to completion - if you have a sport, we can design and build it! Our skillset lies in the ability to design and deliver your court and ensure each aspect is constructed to the highest standards. We are your one stop shop for everything sports court construction. Over the years we have developed a strong professional relationship with a variety of clients including private residences, schools, councils, hotel and resorts, sporting clubs, government and more. Combined with a highly competent and well trained work force, our management team has proven itself time and again on delivering sports projects both grand and small. From tennis to basketball, pickleball, cricket and everything in between, we are your complete turn-key solution for new court construction, resurfacing, fencing and sport court lighting.

4/1 Crown Ct, Varsity Lakes QLD 4227
07 5593 6691 / 1800 222 090
sales@allsportprojects.com.au
www.allsportprojects.com.au



BIOSCAPES GROUP

PRINCIPAL CONTRACTOR

Bioscapes Group is a family owned synthetic surface construction company delivering high quality projects to retirement villages and sporting clubs. With offices in Melbourne and the Gold Coast, we are equipped to service the Eastern side of Australia. Specialising in synthetic sporting surfaces such as bowling greens, multi purpose fields, pickleball courts and more, we are driven by our passion for bringing families and communities together and offer our clients a powerful combination of construction expertise and client management in order to develop relationships that continue beyond construction.

1/33 Industrial Cct, Cranbourne West VIC 3977
1300 4 246 246
admin@bioscapesgroup.com.au
www.bioscapesgroup.com.au



CENTRE COURT CONSTRUCTIONS

PRINCIPAL CONTRACTOR

Civil & Sports Construction t/a Centre Court Constructions builds and resurfaces tennis courts, netball courts, basketball courts, multipurpose courts, cricket, long jump, triple jump, lighting, fencing, accessories, retaining, drainage and earthworks. DET preferred supplier since 2015.

Unit 14, 388 Newman Road, Geebung QLD 4034
07 3857 7755
admin@centrecourtconstructions.com.au
www.centrecourtconstructions.com.au



CHAMPION GRASS BY PREMIER GRASS

PRINCIPAL CONTRACTOR

Design and construction of synthetic grass tennis courts, soccer fields, basketball courts, multisport surfaces, cricket nets and pitches, hockey, bowling greens, rugby and AFL pitches. Champion Grass by Premier Grass has an exclusive partnership with Edel Grass Netherlands.

10/1 Stockwell Place, Archerfield QLD 4108
1300 946 808
info@championgrass.com.au
www.championgrass.com.au



CONTRACTORS QUEENSLAND



COURT CRAFT

PRINCIPAL CONTRACTOR

Court Craft has 35+ years' experience as a sports facility construction company. We specialise in the construction, design and maintenance of sport and recreational facilities plus general structural landscaping and civil construction. Court Craft carries out all aspects of projects from planning, Council submissions, construction of facilities and amenities, lighting systems, landscaping, maintenance etc. Court Craft construct facilities for Basketball, Football, Hockey, Lawn Bowls, Netball, Tennis, Volleyball.

82 Chetwynd Street, Loganholme QLD 4129
1800 996 353 / 02 9763 2900
information@courtcraft.com.au
www.courtcraft.com.au



CUSTOM COURT CONSTRUCTIONS

PRINCIPAL CONTRACTOR

Custom Court Constructions has a total of 40 years' experience throughout Australia in the construction and installation of tennis/multisport courts, sporting facilities, landscaping, repairs and maintenance. CCC caters for a variety of clients including schools, tennis clubs, councils, sporting associations, retirement villages, private and commercial clients. Concrete, roadbase and asphalt bases, lighting and fencing, supply and installation of sporting equipment, multisport courts as well as basketball, netball, volleyball, handball, hopscotch, chess, alphabet, numbers etc.

PO Box 638, Burpengary QLD 4505
0429 772 383 / 0429 772 006
customcourt@outlook.com



GRASSPORTS QUEENSLAND

PRINCIPAL CONTRACTOR

Grassports Australia (QLD) Pty Ltd is a leading provider of synthetic sports and recreational surfaces for a wide range of applications including tennis, volleyball, aquatic, football, soccer, rugby, hockey and more. We are a proud Australian-owned company with over 25 years of experience in designing, installing, and maintaining high-quality surfacing systems that meet the specific needs of our clients. Whether you need a new facility for your school, university, stadium, or community field, Grassports Australia (QLD) Pty Ltd is here to help. Contact us today to learn more about our products and services and how we can help you achieve your goals.

2/1 Casua Drive, Varsity Lakes QLD 4227
07 5593 7427 / 1800 GRASSPORTS
info@gsqld.com.au
www.grassports.com.au



JORDIN SPORTS CONSTRUCTIONS

PRINCIPAL CONTRACTOR

Jordin Sports Constructions is a Brisbane based tennis/netball/basketball/sports fields/multipurpose court construction company that has operated continuously in the Queensland and Northern NSW region for the last 40 years. We offer a total project service: • Design • Project Supervision • Demolition • Earthworks • Base Construction • Surface Installations • Fencing • Landscaping • Lighting • Sports Equipment. We have completed over 360 projects in the last ten years ranging from new multicourt complexes for clubs, to new courts for schools to residential backyard basketball courts. Our inhouse CAD designing allows us to provide ideas for your space no matter what the size. We are a preferred contractor with QLD Department of Education & Training and have performed many successful projects for them.

Unit 14, 388 Newman Road, Geebung QLD 4034
07 3857 5180 / 0408 453 585
admin@jordinsport.com.au
www.jordinsport.com.au



CONTRACTORS

QUEENSLAND



KCL SPORTS

PRINCIPAL CONTRACTOR

KCL Sports is a 100% Australian owned company providing expertise in the construction and installation of synthetic grass for all sporting and landscaping requirements since 1982. Construction of tennis courts, football and hockey fields and bowling greens. Installation of floodlighting systems.

Box 2067 Gateshead Business Centre, Gateshead NSW 2290
02 4944 9188 / 0414 685 519
kcl@kclsports.com.au
www.kclsports.com.au



LANDSCAPE SOLUTIONS

PRINCIPAL CONTRACTOR

Landscape Solutions construct sports and play spaces from multi-field sports precincts to courts and playgrounds. They offer a complete landscape service from landscape construction through to landscape maintenance. They assist clients with sports turf and golf course management, building work, synthetic surfaces and irrigation management. Operating since 1993 in Sydney, they also have offices in Brisbane and Melbourne.

16 Distribution Place, Seven Hills NSW 2147
1300 653 013
info@landscapesolutions.com.au
www.landscapesolutions.com.au

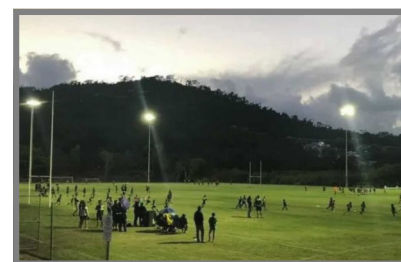


PRECISION SPORTS LIGHTING + ELECTRICAL

ASSOCIATE CONTRACTOR

Installation and maintenance of specialised lighting for sporting fields and public spaces. Design, construction and certification packages, conforming to Australian Standards.

24/1147 South Pine Road, Arana Hills QLD 4054
1300 048 144
info@precisionsports.com.au
www.precisionsports.com.au



PREMIER SPORTS & LEISURE

PRINCIPAL CONTRACTOR

Premier Sports and Leisure is a QLD family-based company with over 18 years of experience. We specialize in full construction, fencing, accessories, surfacing, and maintenance of all sporting facilities, such as athletics facilities, cricket facilities, tennis courts, netball courts, and multipurpose courts.

24 Hasp Street, Seventeen Mile Rocks QLD 4073
1300 552 882
enquiry@premiersportsleisure.com.au
www.premiercourts.com.au



CONTRACTORS

QUEENSLAND

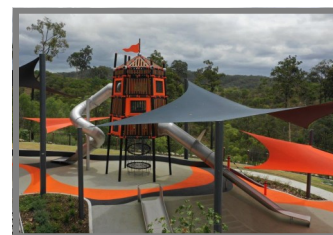


PRO ONE PLAYSCAPES

SURFACING CONTRACTOR

- Theme park and water park surfacing
- Playground surfacing and playground upgrades
- Rubber animals and shapes
- Surfacing repairs
- Sports surfacing
- Playground and surfacing compliance checks

C1 & C2 239 Brisbane Road, Biggera Waters QLD 4214
1800 033 406
andrew@proone.com.au
www.proone.com.au



SPORTS BUILD

PRINCIPAL CONTRACTOR

Sports Build Pty Ltd is a multi-disciplined, specialty sports construction business providing the full turn-key solution in the delivery of sporting precincts. We are proud to design, construct and install our expertise across various disciplines in Natural turf, Powergrass hybrid, Synthetic, FIFA, AFL, Bowls, Basketball, Netball, Hockey, Soccer, Rugby and Multipurpose Sports Playing surfaces. Sports Build can provide as much or as little in the delivery of your new sports facility from concept to delivery. QBCC Lic. 15111789.

Lobby 1, L2, 76 Skyring Tce, Newstead QLD 4006
1800 447 744
info@sportsbuild.com.au
www.sportsbuild.com.au



SPORTS CONSTRUCTION GROUP

PRINCIPAL CONTRACTOR

Sports Construction Group is a family-owned and operated company that specialises in the resurfacing and construction of premium sports courts for a wide array of clients including schools, councils, clubs and homeowners, including basketball, netball and tennis courts. We have a large team of experienced commercial concretors and specialised equipment installers. Our background in the concreting industry means that we have the latest in laser technology to achieve the best result when grades and fall are paramount. SCG services most areas in Queensland as well as northern NSW.

Unit 58, 109 Leitch's Road Brendale QLD 4500
1300 267 787
david@sportsconstructiongroup.com.au
www.sportsconstructiongroup.com.au

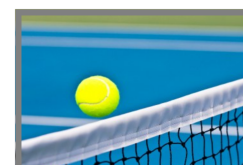


SPORTZING COURT CARE

ASSOCIATE CONTRACTOR

Sportzing Court Care, established in 1994, specialises in synthetic grass and hard court cleaning and maintenance for schools, tennis clubs, councils, sporting associations, retirement villages, private and commercial clients. Sportzing is a family owned and operated company with 15 franchises operating in Queensland, New South Wales, Victoria, South Australia and Western Australia. Sportzing manufactures and installs a range of high quality Australian made products including our signature synthetic court push broom, inground and baseplate tennis posts, winders, tennis nets and accessories.

PO Box 7355, Urangan QLD 4655
1800 818 894 / 0409 800 270
headoffice@sportzing.com.au
www.sportzing.com.au



Sportzing Head Office:
Sportzing FNQ
Sportzing Sunshine Coast
Sportzing North Brisbane
Sportzing South Brisbane
Sportzing Westside Brisbane
Sportzing Gold Coast

Hervey Bay
Rockhampton to Far North Qld
Caboolture to Gladstone
Brisbane northern suburbs to Caboolture
Brisbane southern suburbs to Logan River
Brisbane city to Ipswich
Gold Coast Qld to Byron Bay NSW

headoffice@sportzing.com.au
fnq@sportzing.com.au
northbrisbane@sportzing.com.au
northbrisbane@sportzing.com.au
southbrisbane@sportzing.com.au
westsidebrisbane@sportzing.com.au
goldcoast@sportzing.com.au

CONTRACTORS

QUEENSLAND



SURFACE PRO GROUP

SURFACING CONTRACTOR

Surface Pro Group install synthetic turf and wet pour rubber to commercial and residential facilities, including councils, schools and childcare, basketball courts, tennis courts, padel, mini golf, bowling greens, multisport and play-spaces.

PO Box 15, Grange QLD 4051
1300 521 612
admin@surfaceprogroup.com.au
www.surfaceprogroup.com.au



SURFACING CONTRACTORS AUSTRALIA

PRINCIPAL CONTRACTOR

Surfacing Contractors Australia is a leading provider of surfacing products and contracting services to the Education, Sports, Recreation, Childcare and Local Government sectors. Specializing in the installation of rubber softfall, acrylic surfaces, synthetic grass, athletics surfaces, flexible porous paving, sales and installation of sports and fitness equipment. Locations in both South Australia and Queensland.

PO Box 71, Albany Creek QLD 4034
07 3265 4571
admin.qld@surfcon.com.au
www.surfcon.com.au



THE SPORTS COURT BUILDERS

PRINCIPAL CONTRACTOR

- Sports Surfacing • Fencing • Concrete • Civil works
- Sports Equipment supply/install
- Concrete grinding/polishing

6 Gavin Way, Cornubia QLD 4130
0450 744 814
andrew@thesportscourtbuilders.com.au
www.thesportscourtbuilders.com.au



Pic: Centre Court Constructions: Burpengary SSC

CONTRACTORS

NEW SOUTH WALES/A.C.T.



BRUCE'S PLAYGROUNDS

SURFACING CONTRACTOR

Bruce's Playgrounds & Landscaping are landscape, rubber softfall and playground specialists. They provide friendly, creative and professional solutions for outdoor spaces, having designed solutions for domestic, commercial and government clients in Canberra for the last 20 years.

77 Heffernan Street, Mitchell ACT 2911
02 6241 0446
brucesbobcats@bigpond.com
www.brucesplaygrounds.com.au



CHAMPION GRASS BY PREMIER GRASS

PRINCIPAL CONTRACTOR

Design and construction of synthetic grass tennis courts, soccer fields, basketball courts, multisport surfaces, cricket nets and pitches, hockey, bowling greens, rugby and AFL pitches etc. Exclusive partnership with Edel Grass Netherlands.

4/465 Victoria Street Wetherill Park NSW 2164
1300 946 808
info@championgrass.com.au
www.championgrass.com.au

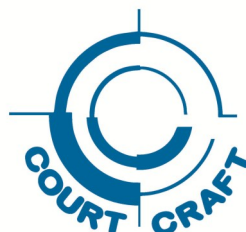


COURT CRAFT

PRINCIPAL CONTRACTOR

Court Craft has 35 years' experience as a sports facility construction company. We specialise in the construction, design and maintenance of sport and recreational facilities plus general structural landscaping and civil construction. Court Craft carries out all aspects of projects from planning, Council submissions, construction of facilities and amenities, lighting systems, landscaping, maintenance etc. Court Craft construct facilities for Basketball, Hockey, Lawn Bowls, Netball, Tennis, Volleyball, Futsal and Football.

55 Loftus Street, Riverstone NSW 2765
1800 996 353 / 02 9763 2900
information@courtcraft.com.au
www.courtcraft.com.au



COURTMASTER SPORTS SURFACING

SURFACING CONTRACTOR

Courtmaster Sports Surfacing offers acrylic and synthetic grass tennis court surfacing as well as tennis court maintenance.

Beacon Hill NSW 2100
Phone: 0403 662 667
nicholas@courtmaster.com.au
www.courtmaster.com.au



CONTRACTORS

NEW SOUTH WALES/A.C.T.



DYNAMIC SPORTS FACILITIES AUSTRALIA

PRINCIPAL CONTRACTOR

Dynamic Sports Facilities Australia is an Australian-owned landscape construction and project management company that builds, upgrades, maintains and repairs sporting facilities. If you are after a tennis, netball, basketball, multi court or a cricket facility from a provider you can trust, look no further than the expert team at DSFA. With more than 1,000 sporting facilities to their name and 40+ years' combined experience across NSW and ACT, DSFA provides for council, residential, schools and clubs. Fully licensed, certified under Quality Assurance ISO-9001, Occupational Health & Safety ISO-45001 and fully insured, DSFA's credibility is founded on providing a complete service strategically managed from start to finish.

PO Box 709, Moss Vale NSW 2577
1300 653 130 / 02 4869 1816 / 0498 200 749
sales@dsfa.com.au
www.dsfa.com.au



GAUCI CIVIL CONTRACTING

PRINCIPAL CONTRACTOR

Gauci Civil Contracting is a family-owned business specialising in civil construction and earthworks projects in parks, sports fields, sports courts, landscaping and playgrounds. They are also involved in turf maintenance and renovations, public open spaces, shared pathways, boardwalks, carparks and drainage projects. They work with Local, State and Federal governments, sporting clubs, schools, commercial and residential clients.

PO Box 121, Cobbitty NSW 2570
0404 477 189
chris@gaucicivil.com.au
www.gaucicivil.com.au

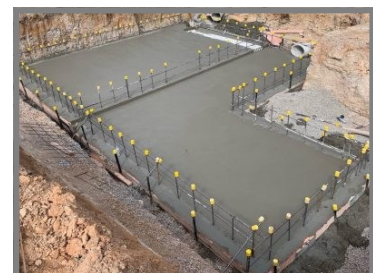


GENESIS CONCRETING

ASSOCIATE CONTRACTOR

Supply and install formwork, place and tie reinforcement and place and finish concrete to concrete structures in the civil and commercial construction industry across Sydney.

U13/115 Woodpark Road, Smithfield NSW 2164
02 9892 1339
info@genesiskoncrete.com.au
www.genesiskoncrete.com.au



GLOOLOOP SURFACING

PRINCIPAL CONTRACTOR

Multi-award-winning Glooloo Surfacing specialises in softfall rubber, synthetic grass, acrylic sports court and permeable stone surfacing installations throughout NSW. Glooloo's skilled and experienced installation crew consistently deliver exceptional projects in public recreational spaces, schools, childcare centres, and government facilities. Supported by an internal team of finance, estimating, and administrative professionals, Glooloo Surfacing is a trusted partner for councils, schools, and leading contractors and landscapers. Glooloo is renowned for delivering complex designs and artistic, innovative works as well as outstanding workmanship and service.

1/38 Binney Road, Kings Park NSW 2148
02 8443 0113
quotes@glooloo.com.au
www.glooloo.com.au



CONTRACTORS

NEW SOUTH WALES/A.C.T.



GRASSPORTS QUEENSLAND

PRINCIPAL CONTRACTOR

Grassports Australia (QLD) Pty Ltd is a leading provider of synthetic sports and recreational surfaces for a wide range of applications including tennis, volleyball, aquatic, football, soccer, rugby, hockey and more. We are a proud Australian-owned company with over 25 years of experience in designing, installing, and maintaining high-quality surfacing systems that meet the specific needs of our clients. Whether you need a new facility for your school, university, stadium, or community field, Grassports Australia (QLD) Pty Ltd is here to help. Contact us today to learn more about our products and services and how we can help you achieve your goals. Based in Brisbane, they also service northern NSW.

2/1 Casua Drive, Varsity Lakes QLD 4227
07 5593 7427 / 1800 GRASSPORTS
info@gsqld.com.au
www.grassports.com.au



JL TURF GROUP

SURFACING CONTRACTOR

JL Turf Group surface acrylic and synthetic grass tennis courts, hockey fields and football fields. They also offer a full construction package with provision of engineering.

29 Shearwater Drive, Warriewood NSW 2102
0414 991 879
luke@jlturfgroup.com.au
www.jlturfgroup.com.au



KCL SPORTS

PRINCIPAL CONTRACTOR

KCL Sports is a 100% Australian owned company providing expertise in the construction and installation of synthetic grass for all sporting and landscaping requirements since 1982. Construction of tennis courts, football and hockey fields and bowling greens. Installation of floodlighting systems.

Box 2067 Gateshead Business Centre
Gateshead NSW 2290
02 4944 9188 / 0414 685 519
kcl@kclsports.com.au
www.kclsports.com.au



LANDSCAPE SOLUTIONS

PRINCIPAL CONTRACTOR

Landscape Solutions construct sports and play spaces from multi-field sports precincts to courts and playgrounds. They offer a complete landscape service from landscape construction through to landscape maintenance. They assist clients with sports turf and golf course management, building work, synthetic surfaces and irrigation management. Operating since 1993 in Sydney, they also have offices in Brisbane and Melbourne.

16 Distribution Place, Seven Hills NSW 2147
1300 653 013
info@landscapesolutions.com.au
www.landscapesolutions.com.au



CONTRACTORS

NEW SOUTH WALES/A.C.T.

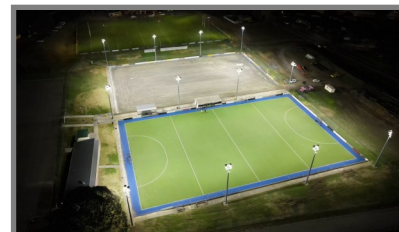


LIGHT UP SPORTS

ASSOCIATE CONTRACTOR

Light Up Sports specialises in the design, supply and installation of LED lighting for sports facilities. We have a real passion for regional, grass-root sports with a mission to provide high quality, budget conscious LED lighting for all types of sports across regional Australia. Services include lighting and electrical site visits and appraisals, designs to Australian Standards, trenching and footing excavations, pole supply and installation, LED lighting supply and installation, lighting control systems.

PO Box 78, Moss Vale NSW 2577
02 4868 2834 / 0402 761 463
dan@lightupsports.com.au
www.lightupsports.com.au



LUXURY SYNTHETIC GRASS

PRINCIPAL CONTRACTOR

Luxury Synthetic Grass and Rubber Surfaces specialises in the installation and resurfacing of synthetic grass and rubber services. With over 10 years' experience, they have completed projects including residential front/backyards, commercial playgrounds, council parks, schools, childcares centres, aged care facilities, sporting fields, training facilities, putting greens, gyms, bars, pubs and clubs.

Unit 6, 4 Grange Road, Leumeah NSW 2560
0424 288 454
corey@luxurysyntheticgrass.com.au
www.luxurysyntheticgrass.com.au

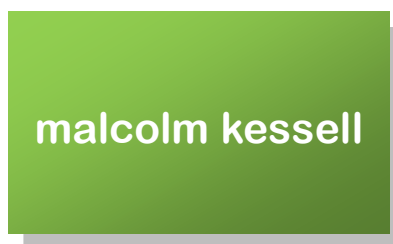


MALCOLM KESSELL

SURFACING CONTRACTOR

With over 35 years' experience in the sports and domestic resurfacing industry, Mal Kessell has extensive insights in all facets of resurfacing. Services include: surfacing of acrylic and synthetic grass sporting areas, surfacing of playground and domestic areas in synthetic grass, repairs to acrylic and synthetic surfaces, supply of sports equipment.

9 Victoria Place, Forster NSW 2428
0404 456 877
malcolmkessell@gmail.com

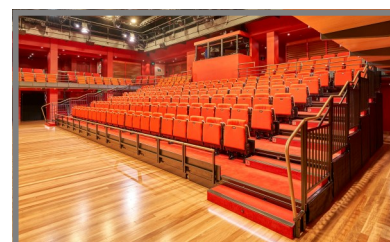


MAXWOOD TECHNOLOGY

SURFACING CONTRACTOR

At Maxwood Technology, we understand the transformational effect a quality timber floor has on a venue. Specialising in sprung flooring systems for over 20 years, we offer a range of timber species and sub-structures to meet varying performance requirements, aesthetics and budgets. From professional sporting venues through to performing arts stages, black box theatres, community venues and school multi-purpose halls, we work closely with our clients to choose the right flooring solution to help them in creating exceptional spaces. We also specialise in audience seating solutions and aisle lighting.

7/4 Prosperity Parade, Warriewood NSW 2102
02 8407 9538
sales@maxwoodtech.com.au
www.maxwoodtech.com.au



CONTRACTORS

NEW SOUTH WALES/A.C.T.



MPC FENCING

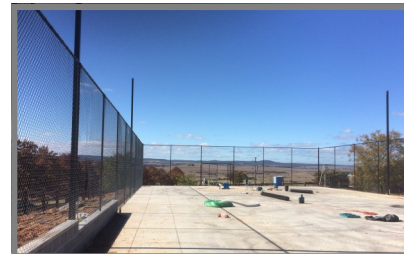
ASSOCIATE CONTRACTOR

MPC Fencing specialises in the design, supply and installation of tennis courts and sporting enclosures, and all chain mesh fencing needs. With over 25 years of experience in the fencing industry, MPC Fencing has a history of working hand in hand with builders, their customers and clients.

PO Box 499, Leichhardt NSW 2040
0419 420 916
mpcfence@gmail.com



MPC FENCING

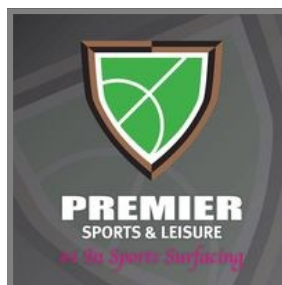


PREMIER SPORTS & LEISURE

PRINCIPAL CONTRACTOR

Construction, supply, installation and removal of sports accessories, fencing, lighting, surfacing of acrylic and synthetic grass sports courts, and recreation/landscape areas. Based in Brisbane, they also service northern NSW.

24 Hasp Street, Seventeen Mile Rocks QLD 4073
1300 552 882
enquiry@premiersportsleisure.com.au
www.premiercourts.com.au



PURE TURF AUSTRALIA

ASSOCIATE CONTRACTOR

Pure Turf Australia is a synthetic turf maintenance specialist who maintains and repairs synthetic surfaces, from sports fields (Tennis, Football, AFL, Hockey and Rugby Union & League) to the education space with multipurpose areas, we also provide services for clubs, councils and synthetic turf installers. We work with the leading industry specialist maintenance equipment to provide the best possible results. We pride ourselves on taking a collaborative approach to achieve the best solution to protect and ensure longevity for all surfaces in the community.

Service areas include: NSW, ACT & QLD

51 Marsh Road, Silverdale NSW 2752
0418 190 885
michael@pureturfaustralia.com.au
www.pureturfaustralia.com.au

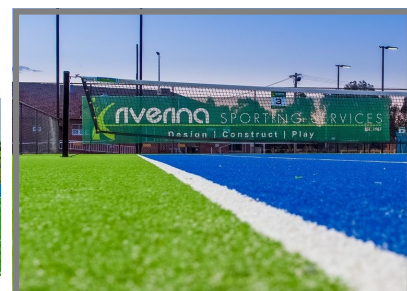


RIVERINA SPORTING SERVICES

PRINCIPAL CONTRACTOR

Riverina Sporting Services offer construction of all sporting surfaces; servicing of sporting surfaces including tennis, cricket, bowling, football; design and construction of football ovals.

2619 Culcairn-Holbrook Road, Culcairn NSW 2660
0458 744 064
tom@riverinasports.com.au
www.riverinasports.com.au



CONTRACTORS

NEW SOUTH WALES/A.C.T.



SPORTS BUILD

PRINCIPAL CONTRACTOR

Sports Build Pty Ltd is a multi-disciplined, specialty sports construction business providing the full turn-key solution in the delivery of sporting precincts. We are proud to design, construct and install our expertise across various disciplines in Natural turf, Powergrass hybrid, Synthetic, FIFA, AFL, Bowls, Basketball, Netball, Hockey, Soccer, Rugby and Multipurpose Sports Playing surfaces. Sports Build can provide as much or as little in the delivery of your new sports facility from concept to delivery.

Lobby 1, L2, 76 Skyring Tce, Newstead QLD 4006
1800 447 744
info@sportsbuild.com.au
www.sportsbuild.com.au



SPORTS CLEAN

ASSOCIATE CONTRACTOR

Sports Clean repairs and maintains synthetic sporting surfaces, particularly major sports fields. Sports Clean's clients include councils, schools, clubs, retirement villages and sporting field builders. We have over 20 years of experience maintaining corporate, school, and club facilities in Sydney Metro, ACT and Regional NSW. Sports Clean has invested in an extensive fleet of specialised maintenance equipment, including for major field and athletic track rejuvenations. We employ and train synthetic grass Technicians and provide detailed Service Reports with the goal of adding value to the facilities we work on.

Unit 6, 5 Hudson Avenue, Castle Hill NSW 2154
02 9420 1200
info@sportsclean.com.au
www.sportsclean.com.au

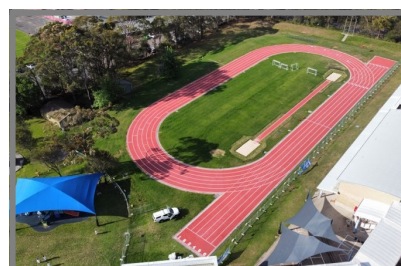


SPORTSZONE GROUP

PRINCIPAL CONTRACTOR

Sportszone Group is a builder of sports fields; surfacing and maintenance including tennis, football, bowling greens, hockey fields, basketball and netball courts. We have been servicing Australia and the world for the last 20 years and have over 26 years' experience. Projects include triathlon finishing track and hockey pitch, Sydney 2000 Olympics, hockey fields in Japan, football pitches and putting greens in Macau, prestige courts in Mauritius and tennis courts and cricket pitches throughout Australian clubs and private homes, as well as a number of large areas for school playgrounds. We are specialists in Rekortan M Sprint and running tracks.

Unit 11-11 Burns Road, Heathcote NSW 2233
1300 302 398 / 02 8544 0196
craig@sportszonegroup.com.au
www.sportszonegroup.com.au



CONTRACTORS

NEW SOUTH WALES/A.C.T.



SPORTZING COURT CARE

Sportzing Court Care, established in 1994, specialises in synthetic grass and hard court cleaning and maintenance for schools, tennis clubs, councils, sporting associations, retirement villages, private and commercial clients. Sportzing is a family owned and operated company with 15 franchises operating in Queensland, New South Wales, Victoria, South Australia and Western Australia. Sportzing manufactures and installs a range of high quality Australian made products including our signature synthetic court push broom, inground and baseplate tennis posts, winders, tennis nets and accessories.

PO Box 7355, Urangan QLD 4655
1800 818 894 / 0409 800 270
headoffice@sportzing.com.au
www.sportzing.com.au



Sportzing NSW Offices:

Sportzing NSW North
Sportzing North Shore
Sportzing Sydney North East

Gosford to Ballina
Sydney North Shore to Mosman
Sydney northern beaches / eastern suburbs / inner city

nswnorth@sportzing.com.au
northshore@sportzing.com.au
sydneyne@sportzing.com.au

SYNTHETIC GRASS & RUBBER SURFACES

PRINCIPAL CONTRACTOR

Synthetic Grass & Rubber Surfaces Australia Pty Ltd is a supplier and installer of both Synthetic Grass and Rubber Wetpour for over 40 years, covering all of NSW and ACT. Synthetic Grass & Rubber Surfaces Australia look after all commercial, domestic, schools, councils, childcare centres for all their surfacing needs. Our team have years of combined experience in providing prompt and efficient service to deliver your project on time and on budget. Our installers are long-term, fully qualified and accredited. They bring their experience, skill and professionalism to every installation.

3 Tepko Road, Terrey Hills NSW 2084
02 9986 1133
sales@syntheticgrass.com.au
www.syntheticgrass.com.au



SYNTHETIC PADEL GROUP

PRINCIPAL CONTRACTOR

With over 40 years experience in designing and constructing a range of sporting surfaces across Australia, Synthetic Sports Group has now added a new arm to its business 'Synthetic Padel Group'. We are skilled at constructing both competition and residential Padel courts. We built the very first Indoor Padel courts in Australia in 2021 and have since constructed twenty courts and counting. Some of our key clients include Indoor Padel Australia, Padel In One and Sydney Racquet Club. We have a range of quality suppliers from Spain, Asia and Australia to meet your budget requirements. As a leader of Padel court building in Australia, our team is focused on producing the highest quality, authentic internal and external Padel courts on the market.

Unit 4, 20-22 Yalgar Road, Kirrawee NSW 2232
0415 833 060
hayden.garn@syntheticpadelgroup.com.au
www.syntheticpadelgroup.com.au



CONTRACTORS

NEW SOUTH WALES/A.C.T.



SYNTHETIC SPORTS GROUP

PRINCIPAL CONTRACTOR

Synthetic Sports Group is a family-owned company specialising in the design, construction and installation of sporting facilities led by Hayden Garn with experience stretching over 30 years. With in-house Engineers, they can offer the full design and construction of all sports for commercial and domestic applications. Specialising in all synthetic sports surfaces including synthetic bowling greens, tennis courts, pickleball courts, padel tennis courts, cricket wickets, futsal pitches, football fields, hockey pitches, basketball and netball courts.

Unit 4, 20-22 Yalgar Road, Kirrawee NSW 2232
0415 833 060
hayden.garn@syntheticssportsgroup.com.au
www.syntheticssportsgroup.com.au



TIGERTURF AUSTRALIA

PRINCIPAL CONTRACTOR

TigerTurf AU are synthetic turf design, construction, and maintenance specialists. Our team offers full in-house capabilities, from design and engineering, construction and project management, to installation and maintenance of synthetic turf fields and facilities. We have some of the most experienced and dedicated individuals in the industry, and are well-poised to assist and guide our clients in all manner of sporting, education, or recreation facilities in every stage. Our operations are backed by some of the best synthetic grass manufacturing in the world; we are a subsidiary of world market leader TenCate Grass, who are the forefront of innovation and production of quality synthetic grass fibres and artificial turf components.

15 Macquarie Drive, Thomastown VIC 3074
03 9464 5052
auinfo@tigerturf.com
www.tigerturf.com

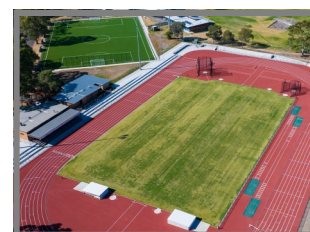


TURF ONE

PRINCIPAL CONTRACTOR

TurfOne, a BildGroup company, excels in sports field construction, recognised for our civil contracting expertise and precise foundational work to ensure peak field performance. Our experienced team offers practical and sustainable solutions for each project, maintaining uncompromising standards in groundwork and drainage. Partnering with top design consultants and surface specialists, we manage sports field projects from inception to completion, including ongoing maintenance through our facility management plans. With enduring customer relationships across varied markets, TurfOne combines experience and professionalism to help clients maximise the potential of their sports projects, ensuring quality and reliability throughout.

133 Metrolink Circuit, Campbellfield VIC 3061
1300 471 822
info@bild.group
www.bild.group



Pic: Synthetic Grass & Rubber Surfaces Australia—Next Sense, Macquarie

CONTRACTORS

VICTORIA



A.S. LODGE

PRINCIPAL CONTRACTOR

A.S. Lodge has constructed over 4,400 courts for municipal councils, schools, universities, clubs and domestic clients since 1979. A.S. Lodge have won awards for all fields of construction both locally and nationwide over the past 44 years. A.S. Lodge combines their membership of the Australian Institute of Engineers and formal training to develop the best synthetic surfaces available including: tennis, hockey, cricket and multipurpose netball, volleyball and basketball courts. We also supply and install floodlighting and accessories including Basketball; Netball; Volleyball; Golf; Ball machines; Umpire stands.

Factory 14/114 Merrindale Drive, Kilsyth VIC 3137
03 9761 4930
info@asltennis.com
www.asltennis.com



ALL SEASONS SYNTHETIC TURF

PRINCIPAL CONTRACTOR

ASST is Perth's leading synthetic surfacing company. We have built strong relationships with a wide variety of sectors, local government, schools, mining companies, sporting facilities, commercial and residential. Now also in Victoria.

26 Bakewell Drive, Port Kennedy WA 6172
1300 931 443 / 08 9524 6065

2 Brady Close, Braeside VIC 3195
03 9078 1313

info@asst.net.au
www.allseasonssyntheticurf.com.au

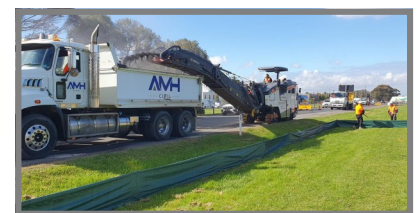


AMH CIVIL

PRINCIPAL CONTRACTOR

AMH Civil is a civil engineering and contracting company with 5 engineers and 25 trade workers, specialising in high quality pavements, including construction of sports field pavements. As well as pavement construction for sports fields, carparks and logistics facilities, AMH Civil also performs stormwater drainage works, small buildings (sheds and industrial buildings) and bulk earthworks.

2/11 Northpark Drive, Somerton VIC 3062
03 9305 2732
admin@amhcivil.com.au
www.amhcivil.com.au

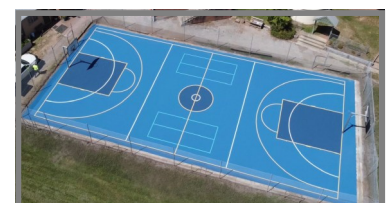


B & T POOL PAINTING & COURT SURFACING

SURFACING CONTRACTOR

- Pool Painting, commercial and domestic pools – concrete and fibreglass
- Epoxy or chlorinated rubber pool paint
- Pool maintenance, crack repairs, tiling and pool cleanouts
- Court Surfacing, acrylic sports court surfacing – concrete or asphalt courts
- Rebound Ace Synpave / Plexipave products
- Crack repairs, court cleaning and line marking
- Servicing regional Victoria – councils, sports clubs and private pools and courts

Bendigo VIC 3550
0438 001 427
info@btpoolscourts.com.au
www.btpoolscourts.com.au



CONTRACTORS

VICTORIA



BIOSCAPES GROUP

PRINCIPAL CONTRACTOR

Bioscapes Group is a family owned synthetic surface construction company delivering high quality projects to retirement villages and sporting clubs. With offices in Melbourne and the Gold coast, we are equipped to service the Eastern side of Australia. Specialising in synthetic sporting surfaces such as bowling greens, multi purpose fields, pickleball courts and more, we are driven by our passion for bringing families and communities together and offer our clients a powerful combination of construction expertise and client management in order to develop relationships that continue beyond construction.

1/33 Industrial Cct, Cranbourne West VIC 3977
1300 4 246 246
admin@bioscapesgroup.com.au
www.bioscapesgroup.com.au



BUDGET TENNIS COURTS

PRINCIPAL CONTRACTOR

Budget Tennis Courts, established in 1988, specialise in new tennis court design and construction, with a choice of synthetic grass, Rebound Synpave, classic clay, granitic sand or asphalt surfaces to meet your requirements. We also re-surface existing tennis courts and do tennis court conversions. Budget Tennis Courts also construct multi use sporting field surfaces. We also offer contract precision laser levelling services.

P.O. Box 231 Baxter VIC 3911
03 9775 5571 / 0415 543 321
sales@budgettenniscourts.com
www.budgettenniscourts.com



CHAMPION GRASS BY PREMIER GRASS

PRINCIPAL CONTRACTOR

Design and construction of synthetic grass tennis courts, soccer fields, basketball courts, multisport surfaces, cricket nets and pitches, hockey, bowling greens, rugby and AFL pitches etc. Exclusive partnership with Edel Grass Netherlands.

2/640-680 Geelong Road, Brooklyn VIC 3012
03 9369 2999
info@championgrass.com.au
www.championgrass.com.au



COURTCARE

ASSOCIATE CONTRACTOR

Courtcare cleans and repairs synthetic grass, red porous and acrylic surfaces, including removal and treatment of moss, algae and weeds, regular maintenance, court equipment, racquet restrings and tennis coaching. Owner Doug Grant also takes groups for tennis and trekking throughout the Himalayas.

4 Valley Parade, Glen Iris VIC 3146
03 9809 4444
info@courtcare.com.au
www.courtcare.com.au



CONTRACTORS

VICTORIA



EASY TURF AUSTRALIA

PRINCIPAL CONTRACTOR

Easy Turf specialises in providing high quality synthetic turf solutions tailored specifically for schools. With over 15 years experience, our artificial turf offers a safe, durable and low-maintenance alternative to natural grass, making it ideal for school playgrounds, sports fields and recreational areas. Our products are designed to withstand the rigours of constant use while remaining resilient to harsh weather conditions. Our collaborative approach allows us to understand each school's specific requirements and deliver tailored solutions that are long-lasting and cost-effective.

Factory 6, 180 Fairbairn Road, Sunshine West VIC 3020

03 9315 3041

sales@easyturf.com.au

www.easyturf.com.au



GRASSPORTS AUSTRALIA

PRINCIPAL CONTRACTOR

Commencing in the 1960s, Grassports Australia is a national and international multi award-winning company and offers full project management, expert inhouse design and construction. We provide customisable synthetic surfaces for sports fields, tennis courts, multipurpose learning and play spaces. Grassports use 100% Australian made specialised synthetic surfaces that can be tailored for your needs, be it for students, families, sports people or performance athletes. As certified FIFA, FIH, ITF and IRB installers and a recognised contractor to the Victorian School Building Authority, Department of Education and the Catholic Education Authority, whatever the artificial sporting surface you are after, Grassports has you covered.

1/38 Green Street, Doveton VIC 3177

03 9792 0622

info@grassports.com.au

www.grassports.com.au



KCL SPORTS

PRINCIPAL CONTRACTOR

KCL Sports is a 100% Australian owned company providing expertise in the construction and installation of synthetic grass for all sporting and landscaping requirements since 1982. Construction of tennis courts, football and hockey fields and bowling greens. Installation of floodlighting systems.

Box 2067 Gateshead Business Centre

Gateshead NSW 2290

02 4944 9188 / 0414 685 519

kcl@kclsport.com.au

www.kclsports.com.au



LANDSCAPE SOLUTIONS

PRINCIPAL CONTRACTOR

Landscape Solutions construct sports and play spaces from multi-field sports precincts to courts and playgrounds. They offer a complete landscape service from landscape construction through to landscape maintenance. They assist clients with sports turf and golf course management, building work, synthetic surfaces and irrigation management. Operating since 1993 in Sydney, they also have offices in Brisbane and Melbourne.

16 Distribution Place, Seven Hills NSW 2147

1300 653 013

info@landscapesolutions.com.au

www.landscapesolutions.com.au



CONTRACTORS

VICTORIA



MATCHPOINT SYSTEMS

SURFACING CONTRACTOR

Matchpoint Systems specialises in the installation of Rebound Ace, PlexiPave and Premier Court products. We have been installing acrylic and cushioned acrylics for over 30 years, to private courts, clubs, associations and councils. We have installed courts for Hingis, Becker, Huber, Charlie Steeb, Melbourne Park, White City, Memorial Drive, the Federer Foundation, Davis Cup, Women's Masters etc. We also install indoor systems such as Rebound Impact Cushioned System and cushioned running tracks.

PO Box 698, Beaconsfield VIC 3807
0418 392 223
info@matchpointsystems.com.au
www.matchpointsystems.com.au

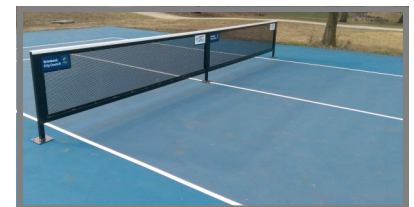


PLAY-SAFE SERVICES

ASSOCIATE CONTRACTOR

Play-Safe Services for all indoor and outdoor play, sports, shade and safety needs, we manufacture sporting equipment, install and maintain playgrounds, shade sails, safety inspections, gymnastics equipment, fitness equipment, home multi sports courts and sporting equipment to suit your needs and budget.

1/56 Aster Avenue, Carrum Downs VIC 3201
03 9775 0771
info@play-safe.com.au
www.play-safe.com.au

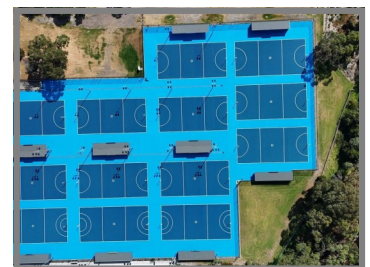


PRO COURT SURFACING & CONSTRUCTION

PRINCIPAL CONTRACTOR

Established in 2016 by industry veteran Steven, Pro Court Surfacing and Construction has quickly become a trusted name in sports court construction and maintenance. With over 20 years of experience, Steven brings a wealth of knowledge and expertise to every project, ensuring that your dream sports court becomes a reality. At Pro Court, we pride ourselves on our commitment to quality and sustainability. We use Australian-made materials whenever possible to support local industry and reduce our environmental impact. Our dedication to excellence is further demonstrated by our certificate of accreditation for APT and California Coatings. Our exceptional team is committed to providing clear communication, friendly service, and a high level of professionalism.

20 Wally Place, Lynbrook VIC 3975
0447 600 660
steve@procourt.com.au
www.procourt.com.au



RUBBERTOUGH INDUSTRIES

SURFACING CONTRACTOR

Established in 1992, RubberTough Industries is recognised to be one of Australia's leading wet pour rubber surfacing companies. Our operations are continually growing and currently allow us to completely service Australia Wide. Not only do we do wet pour rubber. Our manufacturing facility specialises in the production of safety mats designed for swings and slide exits as well as rubber log edging used as borders for playgrounds, sandpits and many other associated rubber products including synthetic turf. Our ongoing partnerships and networks allow us to access the products and services of companies specialising in synthetic grass, multi sports surfaces and shade sails allowing us to offer complete surfacing options.

4 Wills Street, Warragul VIC 3820
1800 060 072
admin@rubbertough.com.au
www.rubbertough.com.au



CONTRACTORS

VICTORIA



RUBBERWORX

SURFACING CONTRACTOR

Rubberworx specialises in installing softfall wetpour rubber surfaces and permeable paving, catering to clients in Victoria, South Australia and Canberra. With an impressive track record of completing over 1,000 projects, we take pride in our commitment to using premium-grade products, including our 100% Australian made pre-coloured recycled rubber which is certified for quality and sustainability. Our extensive range of EPDM and TPV rubber and associated materials is carefully selected from renowned global manufacturers to ensure they can withstand Australia's challenging climate conditions. These materials are available in a wide array of vibrant colours.

47-49 Wright Street, Sunshine VIC 3020
03 9939 1022 / 0428 989 899
mark@rubberworx.com.au
www.rubberworx.com.au



SJM TURF & CIVIL

PRINCIPAL CONTRACTOR

SJM Turf & Civil is a Civil Construction Organisation who specialise in the development and construction of Sporting fields, Reserves, Racing Tracks and Golf Courses. SJM employ a specialist team of Project Managers, Site Supervisors, Plant Operators, Skilled labourers all with significant knowledge in turf construction and maintenance. SJM own and operate a fleet of over 20 pieces of plant and machinery purchased specifically for these sporting development works.

Factory 2/38 Tarmac Way, Pakenham Vic 3810
1300 856 886
admin@sjmgroup.com.au
www.sjmgroup.com.au



S.M. CANTWELL POOLS & COURTS

PRINCIPAL CONTRACTOR

Cantwell Pools & Courts is a leader in the design and construction of inground swimming pools, spas and tennis courts. In our 20 years of operation, we've developed a reputation for producing the highest quality results on all projects, from modest backyard dreams to majestic landscape visions. Cantwell Pools & Courts has the expertise and professionalism to turn your individual vision into a reality.

Unit 3, 45 Northgate Drive, Thomastown Vic 3074
03 9458 1902 / 0418 175 764
info@cantwellpools.com.au
www.cantwellpools.com.au



SPORTS BUILD

PRINCIPAL CONTRACTOR

Sports Build Pty Ltd is a multi-disciplined, specialty sports construction business providing the full turn-key solution in the delivery of sporting precincts. We are proud to design, construct and install our expertise across various disciplines in Natural turf, Powergrass hybrid, Synthetic, FIFA, AFL, Bowls, Basketball, Netball, Hockey, Soccer, Rugby and Multipurpose Sports Playing surfaces. Sports Build can provide as much or as little in the delivery of your new sports facility from concept to delivery.

Lobby 1, L2, 76 Skyring Tce, Newstead QLD 4006
1800 447 744
info@sportsbuild.com.au
www.sportsbuild.com.au



CONTRACTORS

VICTORIA

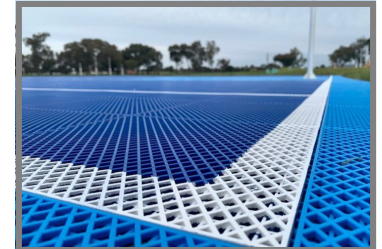


SPORTS COURTS VICTORIA

SURFACING CONTRACTOR

Sports Courts Victoria are the market leaders in sports surfaces, specialising in new court surfaces, repairs and re-surfacing of basketball courts, netball courts, multi-sports courts, tennis courts and pickleball courts. Australian sole distributor of our high performance Modular Sports Tile system, approved Rebound Ace sports court applicators.

6/22 Apparel Close, Breakwater VIC 3219
03 5248 3126 / 0418 176 083
jason@sportscourtsvictoria.com.au
www.sportscourtsvictoria.com.au

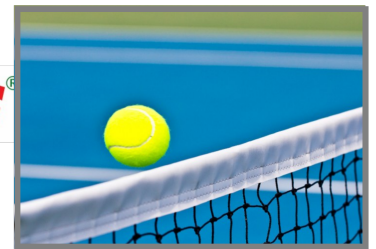


SPORTZING COURT CARE

ASSOCIATE CONTRACTOR

Sportzing Court Care, established in 1994, specialises in synthetic grass and hard court cleaning and maintenance for schools, tennis clubs, councils, sporting associations, retirement villages, private and commercial clients. Sportzing is a family owned and operated company with 15 franchises operating in Queensland, New South Wales, Victoria, South Australia and Western Australia. Sportzing manufactures and installs a range of high quality Australian made products including our signature synthetic court push broom, inground and baseplate tennis posts, winders, tennis nets and accessories.

PO Box 7355, Urangan QLD 4655
1800 818 894 / 0409 800 270
headoffice@sportzing.com.au
www.sportzing.com.au



Sportzing Victoria Offices:
Sportzing Geelong
Sportzing North Melbourne
Sportzing Bayside
Sportzing Victorian North

West including Geelong to Melbourne city
North Melbourne
Bayside
Melbourne city to VIC North / NSW border

geelong@sportzing.com.au
vic@sportzing.com.au
bayside@sportzing.com.au
vicnorth@sportzing.com.au

SPOT ON SYNTHETICS

PRINCIPAL CONTRACTOR

Spot On Synthetics is a Victorian based company and was formed in 2013. The staff at Spot On Synthetics are trained professionals installing soccer fields, hockey, tennis, cricket, multi-sport and domestic landscape synthetic systems worldwide. Our quality staff have over 30 years shared experience and have travelled Australia wide and internationally for their sought after expertise in Hockey, Tennis and Soccer fields specifically. Spot on Synthetics will meet the accreditations of all Sport Governing Bodies including FIH, FIFA, ITF and IRB.

19 Cathedral Rise, Doreen VIC 3754
0447 886 005
info@spotonsynthetics.com.au
www.spotonsynthetics.com



CONTRACTORS

VICTORIA



SYNTHETIC PADEL GROUP

PRINCIPAL CONTRACTOR

With over 40 years experience in designing and constructing a range of sporting surfaces across Australia, Synthetic Sports Group has now added a new arm to its business 'Synthetic Padel Group'. We are skilled at constructing both competition and residential Padel courts. We built the very first Indoor Padel courts in Australia in 2021 and have since constructed twenty courts and counting. Some of our key clients include Indoor Padel Australia, Padel In One and Sydney Racquet Club. We have a range of quality suppliers from Spain, Asia and Australia to meet your budget requirements. As a leader of Padel court building in Australia, our team is focused on producing the highest quality, authentic internal and external Padel courts on the market.

Unit 4, 20-22 Yalgar Road, Kirrawee NSW 2232
0415 833 060
hayden.garn@syntheticpadelgroup.com.au
www.syntheticpadelgroup.com.au



THE FENCE CONSULTANT

ASSOCIATE CONTRACTOR

Fencing materials, quotations and advice. National Distributor of the "Post Collar Protector".

Unit 2, 62-66 Lara Way, Campbellfield VIC 3061
03 9357 8804 / 0433 388 444
thefence@bigpond.net.au



TIGERTURF AUSTRALIA

PRINCIPAL CONTRACTOR

TigerTurf AU are synthetic turf design, construction, and maintenance specialists. Our team offers full in-house capabilities, from design and engineering, construction and project management, to installation and maintenance of synthetic turf fields and facilities. We have some of the most experienced and dedicated individuals in the industry, and are well-poised to assist and guide our clients in all manner of sporting, education, or recreation facilities in every stage. Our operations are backed by some of the best synthetic grass manufacturing in the world; we are a subsidiary of world market leader TenCate Grass, who are the forefront of innovation and production of quality synthetic grass fibres and artificial turf components.

15 Macquarie Drive, Thomastown VIC 3074
03 9464 5052
auinfo@tigerturf.com

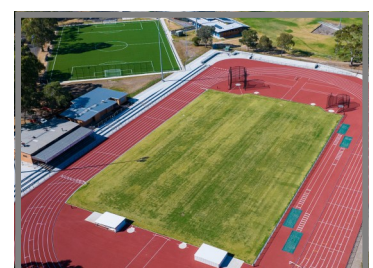


TURF ONE

PRINCIPAL CONTRACTOR

TurfOne, a BildGroup company, excels in sports field construction, recognised for our civil contracting expertise and precise foundational work to ensure peak field performance. Our experienced team offers practical and sustainable solutions for each project, maintaining uncompromising standards in groundwork and drainage. Partnering with top design consultants and surface specialists, we manage sports field projects from inception to completion, including ongoing maintenance through our facility management plans. With enduring customer relationships across varied markets, TurfOne combines experience and professionalism to help clients maximise the potential of their sports projects, ensuring quality and reliability throughout.

133 Metrolink Circuit, Campbellfield VIC 3061
1300 471 822
info@bild.group
www.bild.group



CONTRACTORS VICTORIA



ULTRACOURTS

PRINCIPAL CONTRACTOR

Ultracourts has been building tennis courts to an exceptionally high standard for over 25 years, with thousands of courts completed for local government, tennis clubs, schools and private residences across Australia. With the prominence of synthetic grass for both schools and sporting clubs, Ultracourts can also construct cricket nets, netball courts and custom build multipurpose sporting fields and play areas. Ultracourts can support every aspect of your project, from concept design and drawings, through the permit process, development and construction and finishing with a seamless handover.

17 Corporate Bvd, Bayswater VIC 3153
03 9119 4405
sales@ultracourts.com.au
www.ultracourts.com.au



CONTRACTORS TASMANIA



BLACKTAC

PRINCIPAL CONTRACTOR

Blacktac is a leader in commercial and residential surface construction, specialising in tennis and netball court surfaces, driveways, roadways and car parks, as well as recreational areas. Founded in 1975, Blacktac is a Tasmanian owned company which leads the way in surface construction, from asphalt driveways and roadways to Plexipave surfaces.

448 Westbury Road, Prospect TAS 7250
Phone: 03 6344 5723 / 0417 331 001
blacktac@bigpond.com
www.blacktac.com.au



TIGERTURF AUSTRALIA

PRINCIPAL CONTRACTOR

TigerTurf AU are synthetic turf design, construction, and maintenance specialists. Our team offers full in-house capabilities, from design and engineering, construction and project management, to installation and maintenance of synthetic turf fields and facilities. We have some of the most experienced and dedicated individuals in the industry, and are well-poised to assist and guide our clients in all manner of sporting, education, or recreation facilities in every stage. Our operations are backed by some of the best synthetic grass manufacturing in the world; we are a subsidiary of world market leader TenCate Grass, who are the forefront of innovation and production of quality synthetic grass fibres and artificial turf components.

15 Macquarie Drive, Thomastown VIC 3074
03 9464 5052
auinfo@tigerturf.com
www.tigerturf.com



CONTRACTORS

SOUTH AUSTRALIA



BOAG CONSTRUCTION

PRINCIPAL CONTRACTOR

BoagSPORTS has a passion for sports construction. We've been leaders in the industry for more than 30 years, installing the best quality surfaces on time, every time, with over 1,000 sports surface installations completed in Australia and overseas. We construct and surface bowling greens, tennis courts, sports fields, school ovals.

PO Box 542, Magill SA 5072
08 8390 1393 / 1300 762 360
info@boagconstruction.com.au
www.boagsports.com



J & C SPORTS SURFACES

PRINCIPAL CONTRACTOR

J & C Sports Surfaces offer a wide range of services including tennis court construction, court repairs, maintenance, resurfacing, boundary fencing, lighting & cleaning. In addition to building tennis courts, we can also build other sports surfaces such as basketball courts, netball courts, volleyball courts,

PO Box 218 Middleton SA 5213
0484 692 564
jandcsportssurfaces@gmail.com
www.jcsportssurfaces.com.au



KCL SPORTS

PRINCIPAL CONTRACTOR

KCL Sports is a 100% Australian owned company providing expertise in the construction and installation of synthetic grass for all sporting and landscaping requirements since 1982. Construction of tennis courts, football and hockey fields and bowling greens. Installation of floodlighting systems.

Box 2067 Gateshead Business Centre, Gateshead NSW 2290
02 4944 9188 / 0414 685 519
kcl@kclsport.com.au
www.kclsports.com.au



LIMONTA SPORT AUSTRALIA

PRINCIPAL CONTRACTOR

Limonta Sport Australia provides a complete solution for all sports surfacing; from feasibility studies to design, from installation to long-term scheduled maintenance. Since 1972 Limonta Sport has been developing and producing the best artificial and hybrid turf pitch systems on the market for football, rugby, tennis, hockey, Padel and golf and PVC surfaces for basketball, volleyball, handball and badminton.

2/165 Morphett Road, North Plympton SA 5037
1300 769 499 / 0406 993 160
info@limontasport.com
www.limontasport.com



CONTRACTORS

SOUTH AUSTRALIA



SPORTS BUILD

PRINCIPAL CONTRACTOR

Sports Build Pty Ltd is a multi-disciplined, specialty sports construction business providing the full turn-key solution in the delivery of sporting precincts. We are proud to design, construct and install our expertise across various disciplines in Natural turf, Powergrass hybrid, Synthetic, FIFA, AFL, Bowls, Basketball, Netball, Hockey, Soccer, Rugby and Multipurpose Sports Playing surfaces. Sports Build can provide as much or as little in the delivery of your new sports facility from concept to delivery.

Lobby 1, L2, 76 Skyring Tce, Newstead QLD
4006
1800 447 744
info@sportsbuild.com.au
www.sportsbuild.com.au



SPORTZING COURT CARE

ASSOCIATE CONTRACTOR

Sportzing Court Care, established in 1994, specialises in synthetic grass and hard court cleaning and maintenance for schools, tennis clubs, councils, sporting associations, retirement villages, private and commercial clients. Sportzing is a family owned and operated company with 15 franchises operating in Queensland, New South Wales, Victoria, South Australia and Western Australia. Sportzing manufactures and installs a range of high quality Australian made products including our signature synthetic court push broom, inground and baseplate tennis posts, winders, tennis nets and accessories.

PO Box 7355, Urangan QLD 4655
1800 818 894 / 0409 800 270
headoffice@sportzing.com.au
www.sportzing.com.au



Sportzing SA Office: adelaide@sportzing.com.au



SURFACING CONTRACTORS AUSTRALIA

PRINCIPAL CONTRACTOR

Surfacing Contractors Australia is a leading provider of surfacing products and contracting services to the Education, Sports, Recreation, Childcare and Local Government sectors. Specializing in the installation of rubber softfall, acrylic surfaces, synthetic grass, athletics surfaces, flexible porous paving, sales and installation of sports and fitness equipment. Locations in both South Australia and Queensland.

PO Box 76, Mitcham SC, Torrens Park SA 5062
1300 682 772 / 08 8248 7430
admin.sa@surfcon.com.au
www.surfcon.com.au



SYNTHETIC PADEL GROUP

PRINCIPAL CONTRACTOR

With over 40 years experience in designing and constructing a range of sporting surfaces across Australia, Synthetic Sports Group has now added a new arm to its business 'Synthetic Padel Group'. We are skilled at constructing both competition and residential Padel courts. We built the very first Indoor Padel courts in Australia in 2021 and have since constructed twenty courts and counting. Some of our key clients include Indoor Padel Australia, Padel In One and Sydney Racquet Club. We have a range of quality suppliers from Spain, Asia and Australia to meet your budget requirements. As a leader of Padel court building in Australia, our team is focused on producing the highest quality, authentic internal and external Padel courts on the market.

Unit 4, 20-22 Yalgar Road, Kirrawee NSW 2232
0415 833 060
hayden.garn@syntheticpadelgroup.com.au
www.syntheticpadelgroup.com.au



CONTRACTORS

SOUTH AUSTRALIA



TIGERTURF AUSTRALIA

PRINCIPAL CONTRACTOR

TigerTurf AU are synthetic turf design, construction, and maintenance specialists. Our team offers full in-house capabilities, from design and engineering, construction and project management, to installation and maintenance of synthetic turf fields and facilities. We have some of the most experienced and dedicated individuals in the industry, and are well-poised to assist and guide our clients in all manner of sporting, education, or recreation facilities in every stage. Our operations are backed by some of the best synthetic grass manufacturing in the world; we are a subsidiary of world market leader TenCate Grass, who are the forefront of innovation and production of quality synthetic grass fibres and artificial turf components.

15 Macquarie Drive, Thomastown VIC 3074
03 9464 5052
auinfo@tigerturf.com
www.tigerturf.com



Pic: Surfacing Contractors Australia—Edinburgh Play Space

CONTRACTORS

WESTERN AUSTRALIA



ALL SEASONS SYNTHETIC TURF

PRINCIPAL CONTRACTOR

ASST is Perth's leading synthetic surfacing company. We have built strong relationships with a wide variety of sectors, local government, schools, mining companies, sporting facilities, commercial and residential.

26 Bakewell Drive, Port Kennedy WA 6172
1300 931 443 / 08 9524 6065

2 Brady Close, Braeside VIC 3195
03 9078 1313

info@asst.net.au
www.allseasonssyntheticurf.com.au



ASTRO SYNTHETIC SURFACES

PRINCIPAL CONTRACTOR

Astro Synthetic Surfaces supply and install a wide variety of synthetic surfaces for all surfaces across WA including high-quality soft fall playground surfaces, water playgrounds, splash parks, synthetic grass, rubber mulch, porous pebble paving, gym tiles, cricket pitches, and cricket pitch covers all fully built to Australian standards.

8 Vivian Street, Burswood WA 6100
08 9472 0021
sales@astrowa.com.au
www.astrosynthetic-surfaces.com.au



EVERGREEN SYNTHETIC GRASS

PRINCIPAL CONTRACTOR

Evergreen Synthetic Grass (WA) have been supplying and installing artificial grass since 1996. Evergreen specialises in bowling greens and synthetic sports surfacing.

23 Langar Way, Landsdale WA 6065
08 9303 2130 / 0417 770 010
nicola@evergreenwa.com.au
www.evergreensyntheticgrass.com.au



GREEN PLANET GRASS

PRINCIPAL CONTRACTOR

Green Planet Grass design, construct and surface bowling greens (including conversion from grass to synthetic), cricket pitches, tennis courts, hockey fields, football and futsal fields, as well as commercial installations such as child care centres and schools.

2/41 Buckingham Drive, Wangara WA 6065
0459 490 983
tony@greenplanetgrass.com.au
www.greenplanetgrass.com.au



CONTRACTORS

WESTERN AUSTRALIA



PERTH PLAYGROUND & RUBBER

SURFACING CONTRACTOR

- Installation of Softfall Surfaces—Rubber / Sand / Mulch
- Playground Installation, repairs and maintenance
- Earthworks and minor landscaping

5 Kitson Place, Maddington WA 6109
0412 240 807
mike@perthplaygroundandrubber.com.au
www.perthplaygroundandrubber.com.au



RETECH RUBBER

SURFACING CONTRACTOR

All types of softfall surface solutions tailor made for safety, function and presentation, including: soft fall rubber surfaces for playgrounds, aged care facilities and child care facilities, synthetic grass, cricket wicket covers, playground accessories (3D shapes/animals), design, maintenance and repairs, DIY pre cast tiles.

70A Division Street, Welshpool WA 6106
08 9458 4244
info@retechrubber.com.au
www.retechrubber.com.au



SPORT AND RECREATION SURFACES

PRINCIPAL CONTRACTOR

Construction, surfacing and maintenance of all types of sports courts, synthetic turf sports fields, indoor sport court surfacing and linemarking. Specialists in mini golf, hockey, pickle, paddle, tennis, netball, basketball, multisport and recreational play areas using world leading brands backed by quality workmanship and maintenance services.

16/51 Prindiville Drive, Wangara WA 60165
0400 629 885
loccy@sportandrecsurfaces.com.au
www.sportandrecsurfaces.com.au



SPORTS SURFACES

PRINCIPAL CONTRACTOR

Construction and surfacing of acrylic and synthetic turf sports facilities, including tennis courts, bowling greens, hockey, soccer pitches, putting greens, driving ranges, long jump and running tracks. Authorised Plexipave installer. Fencing, equipment, laser levelling, maintenance and remediation, mine sits and remote areas.

Unit 3, 14 King Edward Road, Osborne Park WA 6017
08 9244 2299 / 0468 610 608
enquiries@sportssurfaces.com.au
www.sportssurfaces.com.au



CONTRACTORS

WESTERN AUSTRALIA



SPORTZING COURT CARE

ASSOCIATE CONTRACTOR

Sportzing Court Care, established in 1994, specialises in synthetic grass and hard court cleaning and maintenance for schools, tennis clubs, councils, sporting associations, retirement villages, private and commercial clients. Sportzing is a family owned and operated company with 15 franchises operating in Queensland, New South Wales, Victoria, South Australia and Western Australia. Sportzing manufactures and installs a range of high quality Australian made products including our signature synthetic court push broom, inground and baseplate tennis posts, winders, tennis nets and accessories.

PO Box 7355, Urangan QLD 4655
1800 818 894 / 0409 800 270
headoffice@sportzing.com.au
www.sportzing.com.au



Sportzing WA Office: wa@sportzing.com.au

SYNTHETIC PADEL GROUP

PRINCIPAL CONTRACTOR

With over 40 years experience in designing and constructing a range of sporting surfaces across Australia, Synthetic Sports Group has now added a new arm to its business 'Synthetic Padel Group'. We are skilled at constructing both competition and residential Padel courts. We built the very first Indoor Padel courts in Australia in 2021 and have since constructed twenty courts and counting. Some of our key clients include Indoor Padel Australia, Padel In One and Sydney Racquet Club. We have a range of quality suppliers from Spain, Asia and Australia to meet your budget requirements. As a leader of Padel court building in Australia, our team is focused on producing the highest quality, authentic internal and external Padel courts on the market.

Unit 4, 20-22 Yalgar Road, Kirrawee NSW 2232
0415 833 060
hayden.garn@syntheticpadelgroup.com.au
www.syntheticpadelgroup.com.au



TIGERTURF AUSTRALIA

PRINCIPAL CONTRACTOR

TigerTurf AU are synthetic turf design, construction, and maintenance specialists. Our team offers full in-house capabilities, from design and engineering, construction and project management, to installation and maintenance of synthetic turf fields and facilities. We have some of the most experienced and dedicated individuals in the industry, and are well-poised to assist and guide our clients in all manner of sporting, education, or recreation facilities in every stage. Our operations are backed by some of the best synthetic grass manufacturing in the world; we are a subsidiary of world market leader TenCate Grass, who are the forefront of innovation and production of quality synthetic grass fibres and artificial turf components.

15 Macquarie Drive, Thomastown VIC 3074
03 9464 5052
auinfo@tigerturf.com
www.tigerturf.com

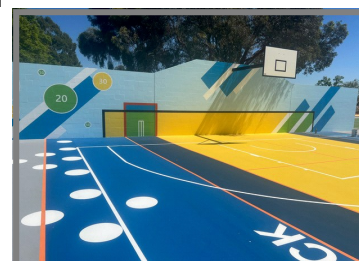


WEST COAST SPORTING SURFACES

PRINCIPAL CONTRACTOR

West Coast Sporting Surfaces (WCSS) are award winning accredited installers of acrylic, cushioned and synthetic grass surfaces. With over 25 years' experience, WCSS has completed over 3,800 courts for a variety of sports for schools, sporting clubs, local governments to corporate organisations. Specialising in tennis, netball, basketball, multisport, cricket pitches and recreational play areas using world-renowned Australian made brands, Laykold®, Omnicourt®, Supergrasse® and Ligaturf®.

Perth WA 6000
0419 944 341
info@wcscs.com.au
www.wcscs.com.au



CONTRACTORS

NORTHERN TERRITORY



HARDY LANDSCAPING (NT)

PRINCIPAL CONTRACTOR

Hardy Landscaping supplies and installs playground equipment and rubber softfall. We sub-contract shade structures and concrete works. We have been installing playground equipment since 2012 and installing rubber softfall since 2014. We continue to offer residential landscaping as a service, however, our passion is the construction of recreational areas (playground equipment, nature play areas, fitness equipment etc). The projects Hardy Landscaping has completed has taken us to all corners of the Northern Territory.

9/152 Winnellie Road, Winnellie NT 0820
0408 083 383
info@hardylandscaping.com.au
www.hardylandscaping.com.au



landscaping



irrigation



playgrounds



NT SHADE, PLAYGROUNDS & RUBBER

PRINCIPAL CONTRACTOR

NT Shade offers a complete Playground Installation Package:

- Engineered Shade Structures
- Installation of Playground and Exercise Equipment
- Installation of Softfall Rubber and Certified Softfall Sand
- Softfall Testing and Playground Audits
- Installation of Sports Courts
- Installation of Artificial Turf

Sheds 1,2 & 4, 59 Reichardt Road, Winnellie NT 0820
Chris: 0414 738 231 Michelle: 0403117 332
chris@ntshade.com.au michelle@ntshade.com.au
www.ntshade.com.au



SYNTHETIC PADEL GROUP

PRINCIPAL CONTRACTOR

With over 40 years experience in designing and constructing a range of sporting surfaces across Australia, Synthetic Sports Group has now added a new arm to its business 'Synthetic Padel Group'. We are skilled at constructing both competition and residential Padel courts. We built the very first Indoor Padel courts in Australia in 2021 and have since constructed twenty courts and counting. Some of our key clients include Indoor Padel Australia, Padel In One and Sydney Racquet Club. We have a range of quality suppliers from Spain, Asia and Australia to meet your budget requirements. As a leader of Padel court building in Australia, our team is focused on producing the highest quality, authentic internal and external Padel courts on the market.

Unit 4, 20-22 Yalgar Road, Kirrawee NSW 2232
0415 833 060
hayden.garn@syntheticpadelgroup.com.au
www.syntheticpadelgroup.com.au



TIGERTURF AUSTRALIA

PRINCIPAL CONTRACTOR

TigerTurf AU are synthetic turf design, construction, and maintenance specialists. Our team offers full in-house capabilities, from design and engineering, construction and project management, to installation and maintenance of synthetic turf fields and facilities. We have some of the most experienced and dedicated individuals in the industry, and are well-poised to assist and guide our clients in all manner of sporting, education, or recreation facilities in every stage. Our operations are backed by some of the best synthetic grass manufacturing in the world; we are a subsidiary of world market leader TenCate Grass, who are the forefront of innovation and production of quality synthetic grass fibres and artificial turf components.

15 Macquarie Drive, Thomastown VIC 3074
03 9464 5052
auinfo@tigerturf.com
www.tigerturf.com



MANUFACTURERS & SUPPLIERS



A1 RUBBER

NATIONAL

A1 Rubber is Australia's largest recycled rubber manufacturer, upcycling over 10,000 tonnes of rubber every year into quality products for various industries, including recreational surfacing, sports underlays, fitness flooring and equine. A1 Rubber has been established for over 30 years, manufacturing and supplying to builders and installation contractors with millions of square metres of products installed throughout Australia.

QLD: 34 Binary Street, Yatala 4207

07 3807 3666

leeanne@a1rubber.com

NSW: 40 Bentley Street, Wetherill Park 2164

(02) 9756 2146

VIC: 19 Link Court, Brooklyn 3012

0473 550 999

toni@a1rubber.com

www.a1rubber.com



ABEL SPORTS

NATIONAL

Abel Sports manufacture and install goal posts for all football Codes, AFL, Rugby Union, Rugby League, Soccer and Netball. Abel Sports' goal posts can be seen at numerous Council sports grounds throughout Australia, and at major Stadiums like MCG, SCG, Adelaide and Perth to name a few. Abel Flag also supply Flagpoles and Banner poles to Councils and State and Federal Government offices and facilities throughout Australia. Abel is an Australian manufacturer and supports the Australian Made Campaign.

27 Endeavour Way, Sunshine West VIC 3020

0419 396 356 / 03 9318 9616

jcann@abelsports.com.au

www.abelsports.com.au www.abelflag.com.au



flags • flagpoles • sports goals

AFN SPORTS EQUIPMENT

NATIONAL

AFN is one of the biggest manufacturers of sports equipment in South East Asia and also the OEM to various companies in the Europe and Australian market, with more than 25 years' experience in the industry. The philosophy of AFN Sports is to produce high quality aluminium sports and athletic products and accessories for the global market. AFN is certified by IAAF, German TUV & BWF. Today, AFN Sports has set its base in Malaysia to take advantage of the economic production costs and at the same time is in a better position to serve the emerging regional market in Asia and around the world.

Lot 10998, Jalan Sungai Jati, 41000 Klang, Selangor, Malaysia

+603 3372 2008 +603 3382 1008

sales@afnsports.com.my

www.afnsports.com.my



ALLSPORTS PRODUCTS

NATIONAL

Allsports Products manufacture tennis nets and net posts and have patented a design for lockable safety net post winders. Their winders are used exclusively by Tennis Australia for the Australian Open. The patented internal and external net posts winders are stainless steel with a fold away handle for safety, are fully guaranteed against faulty materials and workmanship. The external tennis net posts winders will suit standard type net posts, either round or square. Full Stainless Steel Posts are available for the Mark2 and the Base Plated posts with Internal Winders Brush Finished or Powder Coated Black.

PO Box 815, Robina Town Centre QLD 4230

0419 706 030

sales@allsportsproducts.com.au

www.allsportsproducts.com.au



MANUFACTURERS & SUPPLIERS



APT ASIA PACIFIC

NATIONAL

APT Asia Pacific, part of the Sport Group, is a vertically integrated manufacturer of textile yarns, synthetic grass, coatings, and adhesives. The complete range includes artificial turf for any sporting or landscape application, as well as polyurethane-based coatings for athletics tracks, indoor gymnasium flooring applications, playground surfacing, as well as cushioned acrylic surfaces for court sport applications. Our market leading brands include: POLIGRAS hockey surfacing; Ligaturf Football turf; SYNLawn landscaping and golf turf; Omnicourt synthetic turf for tennis applications; Supergrasse synthetic turf for tennis, multisport, lawn bowls, and cricket; Laykold acrylic tennis and netball coatings; Rekortan athletic track surfacing systems; Melos & Fairmont Ecolastic EPDM granules for athletic and playground applications

Factory 3 Dunlopillo Drive, Dandenong South VIC 3175
03 8792 8000
info@aptasiapacific.com.au
www.aptasiapacific.com.au



AUSTRALIAN SURFACING SUPPLIES

NATIONAL

Supplier of high quality Playkote rubber to the Australian market. Our vast range of EPDM rubber, Precoat SBR rubber and associated products are sourced from leading manufacturers and are amongst the best available in the world, proven to withstand the harsh Australian climate and available in a wide range of vibrant colour options. Supplier of high quality synthetic grass, our UV protected turf will outlast harsh weather conditions. Australian agent for Playnetic, interactive outdoor play equipment. Portable Sports Flooring using interlocking tiles for quick drainage.

4 Wills Street, Warragul Vic 3820
1 River Street, Hindmarsh SA 5007
Unit 3/151 Robinson Road, Geebung Qld 4034
1300 PLAYKOTE
sales@australiansurfacingsupplies.com.au
www.australiansurfacingsupplies.com.au



AUSTRALIAN
SURFACING
SUPPLIES



CALIFORNIA SPORTS SURFACES

NATIONAL

California Sports Surfaces, a member of the ICP Group (USA), manufactures and markets leading acrylic and PU surface brands Plexipave, Rebound Ace, CoolTop, Decoturf and Premier Sports Coatings. From 2007-2019, Plexipave (Plexicushion Prestige) was the Official Surface of the Australian Open, while from 1988-2006 Rebound Ace was the Grand Slam surface of choice. From 1978-2019 the US Open Tennis Championships were played on Decoturf. CSS also specialises in court surface systems for indoor and outdoor netball, basketball, multi-sport/multi-purpose courts, cycle/pedestrian tracks, cricket wickets, portable courts and running tracks along with residential and commercial protective coating projects. CSS' applicators and builders are fully trained and accredited for the supply and installation of their products.

67 Assembly Drive, Tullamarine VIC 3043
03 9338 9851
sales-australia@icpgroup.com
www.californiasportssurfaces.com



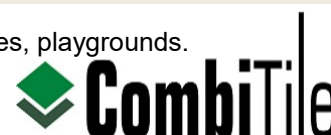
COMBITILE

NATIONAL

Critical fall height of drainage surfacing tiles for aquatic and dry play areas, sports surfaces, playgrounds.

- 100% Australian owned
- 100% Australian manufactured
- 5 year warranty
- Recyclable
- No VOC
- Australian and International Standards approved

Unit 241, 1 Newstead Place, Newstead QLD 4066
0423 604 446
chorme@combitile.com
www.combitile.com



MANUFACTURERS & SUPPLIERS



ERA POLYMERS

NATIONAL

Era Polymers is an Australian owned producer of polyurethane products. These include PU binders for use in wet pour rubber applications. Different binders can also be used for stone, sand and other aggregates. We also produce coatings for finishes over rubber or hard surfaces, as well as quick-curing polyurea joint sealants and waterproofing membranes.

2-4 Green Street, Banksmeadow NSW 2019
02 9666 3788
erapol@erapol.com.au
www.erapol.com.au



FELTON INDUSTRIES

NATIONAL

Felton Industries designs, manufactures and supplies Australian-made premium aluminium outdoor furniture for sports grounds, clubs, schools and organisations. Their wide product range includes grandstands, tiered seating, tables and chairs, shelters, bin enclosures and change room furniture to suit every environment. Felton Industries is ISO9001, ISO14001 and ISO45001 accredited and an approved Local Government Procurement Supplier in New South Wales, Northern Territory, Queensland, South Australia and Western Australia.

3 Millenium Court, Silverwater NSW 2128
1800 220 055
sales@felton.net.au
www.felton.net.au



FIELDTURF AUSTRALIA

NATIONAL

FieldTurf Australia (formerly Grassman) has been a leading manufacturer of synthetic grass in Australia since the late 1970s. FieldTurf is a worldwide leader with more than 25,000 installations across the globe, delivering high-performance artificial turf systems for sports, landscape and commercial applications. By continuously improving our products and paying special attention to our customers' needs and athletes' safety and comfort, FieldTurf continues to be recognized as one of the best and most reliable turf companies in the industry. With products proudly made in NSW, FieldTurf Australia is trusted by some of the most elite associations in the world and in Australia. We are a FIFA Preferred Producer, World Rugby Preferred Producer, FIH Preferred Supplier, but also trusted by ITF Sports & Play, Hockey NSW, and Cricket Australia.

Warehouse C, 2 Kookaburra Road North
Prestons NSW 2170
02 9316 7244
info.australia@fieldturf.com
www.fieldturf.com.au



AUSTRALIA

GEOFABRICS AUSTRALASIA

NATIONAL

Geofabrics are a manufacturer and supplier of geosynthetics that can be used in all applications, and provide technical advice and consultation.

126 Wolston Road, Sumner QLD 4311
07 3713 4600
b.krzewina@geofabrics.com.au
www.geofabrics.co



MANUFACTURERS & SUPPLIERS



GRAND SLAM SPORTS EQUIPMENT

NATIONAL

For over 25 years, Grand Slam Sports Equipment has manufactured and supplied quality sporting equipment such as indoor and outdoor basketball structures, volleyball, netball, badminton and tennis posts. We also supply a full range of AFL, rugby, soccer, futsal and handball goals which are available in both steel and aluminium. We manufacture sporting nets and draw curtains and provide a full installation service. See website for full product range.

19 Deakin Street, Brendale QLD 4500
07 3205 3388
sales@grand-slam.com.au
www.grand-slam.com.au



GREENSET AUSTRALIA

NATIONAL

Established in 1970, GreenSet Worldwide has been the supplier of the official ATP court surface for more than 25 years. GreenSet has installed 15,000 courts for 600 tournaments and events in 60 countries around the world, including the Australian Open surface since 2020. GreenSet is the acrylic hardcourt surface used in many professional tennis events run by the ITF and on the WTA tour.

Jorge Juan 75, 6 Derecha 28009 Spain
Australia: 0455 105 094
travis.wright@greenset.net
www.greenset.net



HALLIDAY LIGHTING AUSTRALIA

NATIONAL

For more than 60 years, Halliday Lighting have worked with thousands of clients to provide outdoor and indoor sports lighting solutions at every level. From schools and grassroots sports clubs, to universities, professional sports clubs and major stadium installations. Halliday Lighting Australia benefit from the combined experience and knowledge of our international colleagues and offer a complete turnkey solution delivered and supported locally. Quality service is the foundation of all that we do and we pledge to always provide a care-free experience from initial design through to installation, final commissioning and ongoing maintenance. We continually pioneer new innovations and technology through close partnerships with the world's most renowned electrical manufacturers, allowing us to offer a comprehensive range of efficient lighting products for all of our sports clients.

15 Kiernan Street, Redland Bay QLD 4165
0448 376 613
info@halliday-lighting.com.au
www.halliday-lighting.com.au



HITECH SPORTS

NATIONAL

HiTech Sports offers end to end solutions for designing, supplying, and installing top-tier sporting equipment. With over 22 years of expertise, we provide custom-fit solutions for sports like Basketball, Netball, Tennis, Volleyball, AFL, Rugby, Football, and more. From grassroots to elite competition, our products meet international standards and deliver unparalleled performance. As a proud supplier of FIBA, FIVB, IAAF-Certified products, we guarantee quality that meets the highest industry benchmarks. Trusted as the official supplier for the 2018 Commonwealth Games Basketball and Beach Volleyball, we're your go-to partner for world-class sports facilities. Let us elevate your venue with cutting-edge hi tech equipment that stands out.

Unit 10, 49 Butterfield Street, Herston QLD 4006
07 3168 2978
sales@hitechsports.au
www.hitechsports.com.au



MANUFACTURERS & SUPPLIERS



INDUSTRIAL ORGANICS

NATIONAL

Established for over 50 years, Industrial Organics offers unsurpassed service to its stakeholders. National Supplier of softfall safety surfacing:

- Coloured Rubber Granules designed to last!
- Base rubber for extra cushion.
- UV Stabilised Polyurethane engineered to work in harmony.
- Trowel Lube to keep things moving.
- Technical Assistance
- Having trouble sourcing something? we can help you.
- Not just a supplier, a supply partner. VIC, NSW, WA, QLD

14A Johnston Court, Dandenong South VIC 3175
0438 999 039
tim@indorganics.com
www.indorganics.com



IQL AUSTRALIA

NATIONAL

IQL has over 10 years' experience in sports field lighting, aquatic and playground area lighting. We have been designing, developing and manufacturing quality LED luminaires since 2010, and have been recognised for high quality luminaires that meet the physical and demanding requirements of commercial, industrial and harsh environments, as well as sporting facilities. Our products must have the ability to withstand the rigorous environmental conditions they will be exposed to and perform to exceed customer expectations.

Unit 6 / 24 Yalgar Road, Kirrawee NSW 2232
1300 475 444
team@iqlighting.com.au
www.iqlighting.com.au



JASSTECH

NATIONAL

Jasstech delivered the first true LED Sports light to Australia in 2011. We have led the market for reliability and service ever since. Our range of products and services means that Jasstech can deliver a lighting solution for any sport or play area. Jasstech's highly experienced team can advise you on the most cost-effective and appropriate solution in even the most challenging situations. Whether it's lighting, poles, scoreboards or ribbon boards, Jasstech will ensure you get the best outcome for your project.

1/141 Logan Road, Woolloongabba QLD 4102
1300 665 135
enquiries@jasstech.com.au
www.jasstech.com.au



KELMATT

NATIONAL

Kelmatt Australia have been manufacturing tennis court windscreens and sight-screens since 1983 and are considered market leaders in this field with many major installations throughout Australia, including Melbourne Park National Tennis Centre, Sydney International Tennis Centre Homebush, Kooyong Lawn Tennis Club Melbourne and the West Australian Tennis Centre at Burswood WA. Our tennis court windscreens greatly reduce the wind on court for better playing conditions. Privacy screens are used mainly around domestic courts for increased privacy and sight-screens for better ball sighting. Other products include Pole Padding for increased safety on Tennis and Netball Courts, Kindergartens and Football Grounds.

36 Jellico Drive, Scoresby VIC 3179
03 9763 8522
sales@kelmatt.com.au
www.kelmatt.com.au



MANUFACTURERS & SUPPLIERS



KINGS SPORTS

NATIONAL

Kings Sports is an Australian owned and operated manufacturer and has been established for over 20 years, supplying to sporting contractors, government, councils, schools and clubs. We manufacture a comprehensive range of quality steel sports equipment, netting products and safety padding. We can customise to suit and also provide installation.

9 Viking Court, Cheltenham VIC 3192
03 9532 0322
sales@kingssports.com.au
www.kingssports.com.au



MADISON SPORT

NATIONAL

Madison offers a full range of custom padding manufactured in Australia. First established in 1985, Madison has been operating in the wholesale manufacture and distribution of sporting goods for over 40 years. Madison works with some of the world's best athletes and organisations to ensure superior standards are maintained for their quality products.

130 Crockford Street, Northgate QLD 4013
07 3370 3800
jason@madisonsport.com.au
www.madisonsport.com.au



MAPEI AUSTRALIA

NATIONAL

Mapei is a world leader in the development, manufacture and supply of 'Sports Flooring' products/systems. The innovative 'Mapecoat TNS System' is specifically designed for installing and/or repairing indoor and outdoor Tennis and Multipurpose courts. Mapei manufacture over 1,500 products worldwide which includes adhesives, paints and finishes for the installation of all wall and floor coverings. The 'Sports Systems' product range are a household name when it comes to the installation of indoor/outdoor netball and basketball courts, multi-purpose areas, gyms, swimming pools, athletic tracks and synthetic turf.

180 Viking Drive, Wacol QLD 4076
07 3276 5000
g.walsh@mapei.com.au
www.mapei.com.au



MAXWOOD TECHNOLOGY

NATIONAL

At Maxwood Technology we understand the transformational effect a quality timber floor has on a venue. Specialising in sprung flooring systems for over 20 years, we offer a range of timber species and sub structures to meet varying performances requirements, aesthetics and budgets. From professional sporting venues through to performing arts stages, black box theatres, community venues and school multi-purpose halls we work closely with our clients to choose the right flooring solution to help them in Creating Exceptional Spaces.

Unit 7/4 Prosperity Parade, Warriewood NSW 2102
02 8407 9538
sales@maxwoodtech.com.au
www.maxwoodtech.com.au



MANUFACTURERS & SUPPLIERS



NET WORLD SPORTS

NATIONAL

Net World Sports are leaders in innovating, supplying and manufacturing world-class equipment. With over 15,000 products spanning 33 sports, Net World Sports is your one-stop shop for goals, nets, shelters and training ground equipment. NWS goals comply with Australian, British and European safety standards, and are certified by FIFA and FIH.

Net World Sports HQ, Bryn Lane
Wrexham Industrial Estate LL13 9UT, United Kingdom
Australia: 07 3911 1985
cs@networldsports.com
www.networldsports.com.au

NET WORLD SPORTS»



OTTER FENCING

VICTORIA

Otter Fencing specialise in chain-link fabric fencing and gates – supply only or supply and installation. We manufacture and install a wide range of sports fencing including tennis courts, multi-purpose sports fields, cricket net enclosures, baseball/softball batting cages, baseball and softball high screen back nets, ovals, hockey and soccer pitches. We also install chain-link fabric, tubular and welded mesh fencing and gates to suit a wide variety of industrial and commercial applications such as security, boundary, parks, schools, internal storage cages, safety, factories, gate automation.

12a Kitchen Road, Dandenong VIC 3175
1300 856 833
sales@otterfencing.com.au
www.otterfencing.com.au



OXLEY NETS

NATIONAL

With over 130 years experience in netmaking and design, our netting products and netting installations demonstrate our emphasis on strength, durability and quality. We provide tennis nets and other sporting nets, draw curtains and net posts. We are the supplier of tennis court nets for the Australian Open. Our behind-goal AFL football nets are used at stadiums like the MCG and ANZ Stadium. We manufacture high quality soccer goal nets. Countless councils and institutions have trusted us to create safe and functional sporting environments.

20 Network Drive, Port Melbourne VIC 3207
1300 730 731
info@oxleynets.com.au
www.oxleynets.com.au



PACIFIC URETHANES

NATIONAL

Pacific Urethanes is an Australian-owned company specialising in the development and production of Polyurethane Systems for Australian and export markets. We have a team of highly dedicated individuals who work closely with their customers as specialists in their field, applying the most advanced technology to achieve exceptional results.

2-10 Produce Drive, Dandenong South VIC 3175
03 8779 0100
orders@pacificurethanes.com
www.pacificurethanes.com



MANUFACTURERS & SUPPLIERS



PADEL 360

NATIONAL

Padel 360 is committed to promoting the natural growth of Padel in Australia. As a full-service provider, the company simplifies the comprehensive process of designing, building, and operating Padel Courts. We collaborate with top firms, such as our primary partner, AFP Courts, the official global licensee for Adidas Padel courts, and the official courts within the Padel Pro Tour. Our goal is to ensure that Australia reaches 100 courts by 2025, making Padel accessible and enjoyable for everyone and creating a new revenue stream for the Australian economy. The core values of the company are:

- **EXCELLENCE:** "Quality instead of quantity. We deliver what we like to use."
- **PASSION:** "We love what we do. We love Padel."
- **BEING LOCAL:** "We work for the community. We work with the community."

Level 33/152 St Georges Terrace, Perth WA 6000
0433 212 912
team@padel360.com.au
www.padel360.com.au



PLAY HARD SPORTS EQUIPMENT

NATIONAL

Play Hard Sports Equipment design and manufacture in-stadium, club level and home/recreational sporting equipment for tennis, basketball, rugby, AFL, athletics, soccer, futsal, hockey, badminton, cricket, netball and volleyball. PHS have supplied premium sports equipment for Sydney Olympic Park, Gold Coast Cbus Stadium, Queensland Tennis Centre, Gold Coast Super Sports Centre - Gold Coast Commonwealth Games premier training facility for Athletics, Hockey and Beach Volleyball - West Coast Eagles AFL elite training ovals and Western State Colorado University, USA.

24 Ern Harley Drive, Burleigh Heads QLD 4220
07 5593 4494
email@playhardsports.com.au
www.playhardsports.com.au



PLAYSAFE FENCING

NEW SOUTH WALES

Playsafe Fencing manufactures and installs chain-wire fencing including tennis courts, baseball dugouts, cricket nets, golf screens, all purpose courts, sporting fields and sporting screens. We sell, install and hire fences and fencing materials across Sydney metropolitan area and the greater Sydney regional area. We have also installed major projects in other states of Australia.

24-26 Airds Road, Minto NSW 2566
02 9820 1200
info@playsafefencing.com.au
www.playsafefencing.com.au



SMARTLUX

NATIONAL

Smartlux supply the Australian and Pacific markets with LED sports lighting solutions and base hinge lowering poles. We have the team, experience and track record to deliver a range of job sizes from very small, to large projects with lights poles and high end technology. The luminaire selections are from quality trusted international manufacturers, who have been supplying the global markets for more than half a century, with solid brand reputation in their products and honouring their warranties. We provide a full turnkey of lighting design, supply, installation support, and maintenance. Lighting designs are MIES Certified (Member Illumination Engineers Society) to Australian Standards for the sport application and for obtrusive light compliance. MIES design sign off is often required for the qualification process of government grants.

33 Perihelion Street, Coorparoo QLD 4151
0450 747 337 / 1300 318 464
craig@smartlux.com.au
www.smartlux.com.au



MANUFACTURERS & SUPPLIERS



SPORTZING COURT CARE

NATIONAL

Sportzing Court Care, established in 1994, specialises in synthetic grass and hard court cleaning and maintenance for schools, tennis clubs, councils, sporting associations, retirement villages, private and commercial clients. Sportzing is a family owned and operated company with 15 franchises operating in Queensland, New South Wales, Victoria, South Australia and Western Australia. Sportzing manufactures and installs a range of high quality Australian made products including our signature synthetic court push broom, inground and baseplate tennis posts, winders, tennis nets and accessories.

PO Box 7355, Urangan QLD 4655
1800 818 894 / 0409 800 270
headoffice@sportzing.com.au
www.sportzing.com.au



SURFACE DESIGNS

NATIONAL

Surface Designs was founded in 2009, a wholesale company for the rubber safety surfacing industry. We are the exclusive importer of Rosehill Polymers rubber granule products for Australia and New Zealand. With Rosehill TPV® the soft fall surface is stable allowing an installation to last for up to ten years and the integrity of the granule allows the surface to stay supple. Rosehill TPV® is made from premium quality virgin polymers, combined with the highest possible UV stabilized pigments so as to retain its colour, even in our harsh Australian climate. Surface Designs also provide Polyurethane Binders to work with the granules.

Unit 12, 1 Jubilee Avenue, Warriewood NSW 2102
02 9986 2445
sales@surfacedesigns.com.au
www.surfacedesigns.com.au



SYNERGY IN TURF

NATIONAL

SYNERGY InTurf (SYNERGY) manufacture and supply artificial turf products in Sydney for commercial and domestic landscape, golf, cricket, tennis, multi-sport courts, playgrounds and bowling green contractors Australia wide. With commercial and manufacturing rights to GREENFIELDS product range for grassroots and elite football and hockey artificial turf systems, SYNERGY brings to the market 40-years' construction and installation experience on top of 25-years manufacturing. Our complete understanding of the synthetic turf industry makes us a unique supplier with focus on customer satisfaction.

165 Prospect Highway, Seven Hills NSW 2147
1300 796 100
help@synergyturf.com.au
www.synergyturf.com.au



TIGERTURF AUSTRALIA

NATIONAL

TigerTurf, a synthetic turf manufacturer for over 36 years, is one of the world's largest synthetic turf companies. Many of TigerTurf's products have been certified by world sporting bodies, including FIFA, World Rugby, FIH, ITF and World Bowls. As a successful synthetic turf manufacturer, TigerTurf has the experience and expertise to guide you in choosing the best turf for your unique requirements and challenges. TigerTurf is a subsidiary of TenCate Grass, a multi-national company and world market leader in the production of quality synthetic grass fibres and artificial turf components.

15 Macquarie Drive, Thomastown VIC 3074
03 9464 5052 / 1800 802 570
auinfo@tigerturf.com
www.tigerturf.com



MANUFACTURERS & SUPPLIERS



TYRECYCLE

NATIONAL

At Tyrecycle, we're committed to eliminating the export of whole-baled tyres. As Australia's largest producer of recycled rubber, our tyres aren't sent offshore or to landfill. That's why we're grabbing the attention of companies both locally and internationally as we continue to develop our environmentally focused innovation to create a cleaner tomorrow, right here in Australia. As part of the highly regarded integrated resource recovery group ResourceCo, we're continually discovering new applications for waste rubber in our quest to decrease the number of tyres entering waste streams and ending up in landfill. We manufacture and supply rubber granules, buffings and powders for use in playground surfaces, sporting surfaces, infill for synthetic and natural turf, equestrian surfaces and more.

Private Bag 48, Somerton VIC 3062 Australia
03 8339 3555
sales@tyrecycle.com.au
www.tyrecycle.com.au



URBAN TURF SOLUTIONS

NATIONAL

Urban Turf Solutions is an Australian manufacturer of Synthetic Turf who pride themselves on supplying the Australian market with industry leading products that are fitting for Aussie conditions. Our synthetic grass range is suitable for a wide variety of applications, from sports courts, commercial projects, to residential installs and everything in between. If you are looking for a supplier who cares about its products and is constantly innovating to bring our customers the latest in synthetic turf you have found them.

12 Telford Circuit, Yatala QLD 4207
07 3382 7260
info@urbanturfsolutions.com.au
www.urbanturfsolutions.com.au



Pic: Ultracourts—Ivanhoe VIC

PROFESSIONAL SERVICES



ACOUSTO-SCAN

NATIONAL

Acousto-Scan is an ISO/IEC 17205 Laboratory that specialises in testing sporting and playground surfaces. Their accreditations include NATA (National Association of Testing Authorities, Australia), FIFA (Federation Internationale de Football Association), WR (World Rugby Board), AFL (Australian Football League), CA (Cricket Australia), ITF (International Tennis Federation), FIH (International Hockey Federation). They are an ISSS Scientific Body Member. Acousto-Scan has been directly involved with the Olympics, Commonwealth Games, Asian Games, Pacific Games, FIFA gold projects and World Cups.

44/59 Halstead Street, South Hurstville NSW 2221
02 8385 4872
admin@acoustoscan.com.au
www.acoustoscan.com.au



DALTON CONSULTING ENGINEERS

NATIONAL

Dalton Consulting Engineers are experts in the design and project management of sporting projects and related infrastructure. DCE prides itself on combining the engineering and financial imperatives for sports facilities with the necessary infrastructure requirements. Drawing on extensive knowledge and experience in the delivery of sporting projects, DCE provides expert services and advice in the following key areas: master planning, 3d animations for concept design, synthetic and turf sports fields, athletic tracks, thoroughbred racing facilities, water saving initiatives, integrated water cycle management, detailed design, project management, construction management.

Level 3, 678 Victoria Street, Richmond VIC 3121
03 9813 7400
info@dceng.com.au
www.dceng.com.au



IDWALA

VICTORIA

iDwala is known as the Community Sports Facility Specialist offering the highest quality designs and technical expertise to Councils, Schools and Sporting Clubs looking to create sporting facilities that are unique, affordable and innovative so the whole community can enjoy them for years to come. Whether it be for netball, tennis, basketball, cricket, athletics, hockey, volleyball, futsal, soccer, rugby, pickleball or multisport facilities, iDwala can help turn your vision into a reality.

Gisborne VIC 3437
0409 529 689
hello@idwala.com.au
www.idwala.com.au



LABOSPORT AUSTRALASIA

NATIONAL

Labosport is the world's largest sports surfaces testing house, with over 150 staff in 12 countries. The Australian-based arm of Labosport (Labosport Aust.) provides independent accredited performance testing for all leading sports organisations, including FIFA, WR, FIH, IAAF, AFL, World Bowls and ITF. We also provide independent research, consultancy and design on a wide range of sports surfaces, whether they be synthetic, hybrid or natural turf.

52 Raby Esplanade, Ormiston QLD 4160
0406 558 120
admin.au@labosport.com
www.labosport.com



PROFESSIONAL SERVICES

McHUGH AND EASTWOOD

GLOBAL FORWARDING

McHugh and Eastwood has created successful long-term relationships with our customers since we commenced freight forwarding operations in Geelong in 1980. Our **100% Australian owned logistics and freight company** has grown extensively through providing our customers with professional, efficient and value for money services that are customised to match their needs and priorities. Our services include but are not limited to:

- Airfreight
- Oceanfreight
- Customs Brokerage Service
- Special Projects
- End to End Global Logistics

9 Fellowes Court, Tullamarine VIC 3043
(03) 9330 4541
sales@mcheast.com.au
www.mcheast.com.au



MARK EDMONDSON CONSULTING

NATIONAL

Consultancy and design in the construction, surfacing and fencing of tennis courts, sports fields and playgrounds, including sports equipment and infrastructure. Specialising in synthetic and acrylic surfaces.

6 Bundara Close, Mona Vale NSW 2103
0412 476 270
markedmondson0@icloud.com



MARK EDMONDSON
CONSULTING
PTY LTD

PLAYGROUND SAFETY INSPECTORS AUSTRALIA

NATIONAL

PSIA specialises in playground and park services, providing comprehensive risk management audits, safety inspection, training and certification for playground safety inspectors and surface impact testing. Our consultancy and advice services ensure that playgrounds meet the highest safety standards, promoting a secure and safe play environment for children.

PO Box 5127, Canning Vale South WA 6155
08 9256 1560
lynnel@psia.net.au
www.psia.net.au



PLAYTEST

NATIONAL

Playtest is an independent playground and surface testing and inspection company, specialising in the testing and assessment of all playgrounds. We provide a field testing and laboratory testing service. We have the capabilities to deal with any playground surface testing, from Critical Fall Height testing to failure investigation of the rubber surfaces. Our services are utilised by councils, child care centres, independent schools, playground companies, surface companies and leisure management companies. Many surface construction companies draw upon our experience and knowledge in order to ensure the quality and durability of their products. (e.g. UV testing, TGA, DSC, SBR rubber, EPDM, TPV, TPE).

44/59 Halstead Street, South Hurstville NSW 2221
1300 88 4949
grant@playtest.com.au
www.playtest.com.au



PROFESSIONAL SERVICES

SMART CONNECTION CONSULTANCY

NATIONAL

Smart Connection Consultancy has supported local and state government, schools and universities and all levels of sport embrace sports surface technology to grow participation in active recreation and sport. Managing Director, Martin Sheppard is recognised globally for joining the dots between health and community outcomes, with participation and pathway programs and how the sports surfaces, when “fit for purpose” allow the organisations to achieve their goals. Martin is the Chair of the International Association for Sports and Leisure Facilities (IAKS) – Sports Surfaces Expert Panel, the Technical Consultant for Hockey Australia, Football Australia, National Rugby League and Rugby Australia. He brings this global knowledge and advocacy to each local project.

Suite 40, 204-218 Dryburgh Street, North Melbourne VIC 3051
03 9421 0133
martins@smartconnection.net.au
www.smartconnection.net.au



SPORTENG

NATIONAL

SPORTENG specialises in the planning, design and construction inspection of Fields of Play for all sports. Blending engineering with specialist knowledge gained from working closely with sport governing bodies, stadium curators, sport planners and architects, SPORTENG provides leading-edge technical advice for all forms of Field of Play. Pivotal to the SPORTENG approach is our understanding of the specific design requirements for a Field of Play and our appreciation of how facilities will be constructed, operated and maintained. Our specialist team, the largest in Australia, brings every skill to the table to ensure we can deliver the highest quality and most appropriate design option for clients.

U4-5, 24-36 Camberwell Road, Hawthorn East VIC 3123
03 9939 6355
Jarrod.Hill@sporteng.com.au
www.sporteng.com.au



SPORTS DESIGN GROUP

NATIONAL

Sports Design Group provides sports design and project management services to the Victorian and Australian markets. Our full range of professional services include:

- Feasibility
- Masterplan
- Concept design
- Design and specification
- Project management
- Construction administration

9 Atchison Avenue, Ashburton VIC 3147
0427 620 487
admin@sportsdesigngroup.com.au
www.sportsdesigngroup.com



Pic: SportEng—Cranbrook School Oval

AFFILIATE MEMBERS

AUSTRALIA



AUSTRALIAN LEISURE MANAGEMENT (ALM)

NATIONAL

Australasian Leisure Management magazine is SAPIA's 'Official Publication', with all SAPIA members receiving a copy of the printed magazine (mailed six times a year) as a membership benefit. SAPIA members can also receive the bi-weekly ALM e-newsletter with the latest news from across the industry by signing up at www.ausleisure.com.au/newsletter/. Australasian Leisure Management is a business magazine aimed at those who work and manage in all areas of the leisure industry, with sport, venues, play, surfaces and safety key areas of coverage. It invites news and content from SAPIA members for both the magazine and website.

PO Box 478, Collaroy NSW 2097
02 9970 8322
leisure@ausleisure.com.au
www.ausleisure.com.au



AUSTRALASIAN WIRE INDUSTRY ASSOCIATION (AWIA)

NATIONAL

The AWIA is a non-profit organisation formed by companies involved in the manufacturing sector to support the long term development and prosperity of the wire industry throughout the Australian, New Zealand, Pacific and South East Asian region. Member companies are involved in all aspects of the industry from wire manufacturers and raw material suppliers, to wire products manufacturers, machinery suppliers and ancillary service providers.

PO Box 1210G, Greythorn Vic 3104
1300 942 500
richard@wireassociation.org.au
www.wireassociation.org.au



AUSTRALIAN SPORTS FOUNDATION (ASF)

NATIONAL

The Australian Sports Foundation helps clubs and organisations as well as individual athletes to fundraise for sport. Fundraising4Sport (F4S) is the main fundraising program whereby each project is set up with its very own personalised project page and secure donation platform which can be shared with communities to raise awareness. The ASF is uniquely positioned to enable philanthropic support to Australian sport by providing tax deductibility for donations made to projects signed up. This means that donations of \$2 or more made through the Australian Sports Foundation allow donors to claim a tax deduction.

Leverrier Street, Bruce ACT 2617
02 5112 0990
ryan.holloway@asf.org.au
www.asf.org.au



TED STUBBERSFIELD

QUEENSLAND

Ted Stubbersfield is an award-winning sawmiller (now retired) with a passion for timber - timber that is used well. He is an expert witness and educator in the field, publishing 21 guides to date on professional timber usage and design guides, including 'Timber in Playgrounds'.

33 Lake Apex Drive, Gatton QLD 4343
0414 770 261
edgarstubbersfield@gmail.com
www.deckwood.com.au



TENNIS QUEENSLAND—COURT TECH

QUEENSLAND

Tennis Queensland - Court Tech provides project management and specialist design consultancy services for tennis courts, multi-purpose courts, other sports courts (such as netball, basketball and volleyball) and sports lighting. This includes site inspections, reports and general advice, design and specification reviews as well as procurement and full project management services. These services are available to tennis and other sports clubs, private court owners, schools and universities, architects, engineers and other design professionals, as well as to all levels of Government.

190 King Arthur Terrace, Tennyson QLD 4105
0434 561 025
mblomer@tennis.com.au
www.tennis.com.au/qld



AFFILIATE MEMBERS INTERNATIONAL



AMERICAN SPORTS BUILDERS ASSOCIATION (ASBA)

U.S.A.

ASBA is a national organization for builders, designers and suppliers of materials for tennis courts, running tracks, natural and synthetic turf fields, indoor and outdoor synthetic sports surfaces. It is recognized as a centralized source for technical and consumer-oriented information.

2331 Rock Spring Road, Forest Hill MD 21050
United States of America
(USA) 866-501-ASBA (2722)
info@sportsbuilders.org
www.sportsbuilders.org



ESTC (EMEA SYNTHETIC TURF COUNCIL)

INTERNATIONAL

ESTC is the trade association for the synthetic turf industry in the EMEA region (Europe, Middle East and Africa). Its objective and purpose is to serve, promote, develop, grow and advocate for the synthetic turf industry, working in both the sports and landscaping sectors. ESTC fulfils its role by means of close collaboration with all parties involved: members, end-users, sports governing bodies and legislators.

Rue Belliard 40, 1040 Brussels
Belgium
(Belgium) +32 2 880 52 95
info@estc.info
www.estc.info



SPORTS AND PLAY CONSTRUCTION ASSOCIATION (SAPCA)

U.K.

The Sports and Play Construction Association (SAPCA) is the recognised trade association for the sports and play construction industry in the United Kingdom. Its role is to foster excellence, professionalism and continuous improvement throughout the industry in order to provide the high quality facilities needed at all levels of sport, physical activity and play. SAPCA membership signifies professional competence and performance which directly benefits customers that choose member companies for their projects.

The Hexangle, Stoneleigh Park, Warwickshire UK CV8 2LG
United Kingdom
(UK) +44 24 7641 6316
info@sapca.org.uk
www.sapca.org.uk



SYNTHETIC TURF COUNCIL

INTERNATIONAL

Founded in 2003, The Synthetic Turf Council is a non-profit trade association for the synthetic turf industry. The STC's vision is to improve the world through synthetic turf by serving as the global forum to promote, develop, grow and advocate for the synthetic turf industry. STC serves as a trusted source and advisor to the industry through a collective and unified voice. The STC ensures industry excellence through guidelines, certification and education and networking. STC promotes industry growth through targeted outreach and recognition.

2331 Rock Spring Road, Forest Hill, Maryland 21050
United States of America
(USA) +1 443-640-1067
office@syntheticturfCouncil.org
www.syntheticturfCouncil.org



HONORARY MEMBERS

J.T. DAVIES

NEW SOUTH WALES

Jack Davies, a Sydney-based consultant structural engineer, has specialised in tennis court and sports field design and construction for over 40 years. Jack was a good tennis player, squash player and cricketer in his own right, and was a consultant to Tennis NSW for many years.

PROFESSOR DAVID EAGER

NEW SOUTH WALES

Professor Eager represents Australia on ISO/TC 83 Sports and Recreational Equipment. He is an invited technical observer on the European Union Technical Committee CEN/TC 136/SC 1 Children's Playground Equipment and Surfacing. David's primary research is in the area of injury prevention by applying risk engineering and technological interventions to eliminate mortalities and reduce the likelihood and severity of injuries. He is also involved in the human factors research within the UTS Research Centre for Intelligent Mechatronic Systems that is conducting research into the physiological and psychological aspects of human-machine and human-environment interaction. David is currently investigating improved techniques and parameters for the measurement of material properties for attenuating surfacing within children's play spaces with a view to reducing the severity and frequency of injuries associated with falls. He is also conducting research into the characterization of trampoline performance.

MAURICE PHILP

QUEENSLAND

Maurice Philp, formerly President of Tennis Queensland from 1998-2004, is a retired Specialist Consulting Civil Engineer who assisted a variety of private, semi-government and government clients on a wide range of projects from small residential estates to multi-story commercial buildings and industrial and mine developments. Throughout his career, Maurice provided advice on matters covering the complete range of geotechnical engineering from investigation and design stages of projects through construction to performance evaluation during project life. Maurice has been acknowledged by Tennis Queensland as the instigator of much change and was credited with being primarily responsible for developing and delivering professional governance within that organisation. He was a member of the Technical Services Advisory Group that published the first edition of Tennis Queensland's Technical Manual for the Design, Construction and Maintenance of Tennis Facilities. It was Maurice's love of tennis that created his solid connection to the game, the tennis fraternity and to our mutual cause which champions good court construction processes.

JOE WADKINS

INTERNATIONAL

US-based Joe Wadkins says: "My mission is to help contractors build their businesses by offering training, education and technical support in the most recognized problems in the synthetic turf industry today." Joe Wadkins aka 'Ask JW' has become one of the leading synthetic turf experts across the globe. Joe has been recognized and awarded by the Nevada Contractors Board for his trade expertise and mission to promote confidence and integrity within the turf industry. He has been highly sought after around the world to consult, design, train and install football, soccer, and baseball fields, not to mention putting greens and pet facilities. His expertise has allowed him to work for many high-end resorts such as Caesars Palace, City Center, Wynn Hotels, Encore, Hotel Beverly Hills, Ritz Carlton Hotel, Palazzo, and so many more to list. JW has been twice awarded for the impeccable synthetic turf installation on the famous Las Vegas Strip Medians. He has been instrumental in engineering, designing, and constructing commercial playgrounds including H.I.C & GMAX Testing. JW is an Inventor with several patents for his "TURFBRUSH" and "SUPERSEAM TOOL", a proprietary process that revolutionized this Industry teaching undetectable seam integration. You may also hear him speak about Superseam Pro 444, the strongest adhesive in the industry. His passion for this Industry is about #helpingothers.

TECHNICAL RESOURCES

SAPIA provides technical information for members, specifiers, customers and end users via our Guide Specifications and Codes of Practice.

As the recognised Australian trade association, SAPIA fosters excellence, professionalism and continuous improvement throughout the sports and play construction industry, in order to provide the high quality facilities necessary for the success and safety of Australian sport and recreation.

SAPIA authored the **Guide Specifications for Tennis Court Construction** more than 20 years ago. The Guide includes information on planning, design, orientation, dimensions, gradients, drainage, surfaces, bases, fencing, lighting and accessories. Since building or resurfacing one or more tennis courts is not only relatively expensive but also a long term investment, special care should be taken in the selection of professionals involved in the project. We recommend using only accredited SAPIA Contractor Members.

In 2018, SAPIA launched the **SAPIA Code of Practice for the Installation and Maintenance of Impact Attenuating Surfacing Systems, Part 1: Wet Pour Rubber Safety Surfacing for Playgrounds**. SAPIA produced this Code of Practice, the first in a series of topics relating to sports and playground construction, to provide prospective clients and specifiers with guidance on the basic construction requirements, specifications and maintenance currently employed in constructing wet pour impact attenuating surfacing in playgrounds. This document calls on the experience of our member companies who have constructed a wide range of installations for a variety of clients over many years. The requirements of the relevant Australian Standards are also incorporated, where appropriate, in the document. It is hoped that it will prove useful in the selection of an appropriate system and surface and form a useful reference in the design and construction process. As noted in the Code, we highly recommend the engagement of an experienced SAPIA contractor member for all aspects of playground design, construction and installation.

In 2022, we published the **SAPIA Code of Practice for the Construction, Surfacing and Maintenance of Sports Courts**, referred to by one of the founding members of the sports court construction industry as 'The Bible'.

In May 2023, SAPIA updated the **SAPIA Code of Practice for the Installation and Maintenance of Impact Attenuating Surfacing Systems**, including other softfall playground surface options, new standards compliance and best installation and maintenance practice recommendations.

We offer these document free of charge to download (see the Technical Guides page of the SAPIA website). Printed copies are also available to purchase at a cost of \$30 each, including postage. Contact the SAPIA office on 1800 208 202 (Australia) or 0800 208 202 (New Zealand) or email office@sapia.org.au for more information or to discuss your particular requirements.



GUIDE SPECIFICATIONS FOR



TENNIS COURT CONSTRUCTION

SPORTS & PLAY INDUSTRY ASSOCIATION
PO BOX 118 MONA VALE NSW 1660 AUSTRALIA
www.sapia.org.au

- UPDATED JANUARY 2021 -



SAPIA CODE OF PRACTICE



FOR THE CONSTRUCTION, SURFACING AND MAINTENANCE OF SPORTS COURTS

INCLUDING
TENNIS COURTS • NETBALL COURTS
BASKETBALL COURTS • MULTI-SPORTS COURTS

SPORTS AND PLAY INDUSTRY ASSOCIATION
PO BOX 118 MONA VALE NSW 1660 AUSTRALIA
www.sapia.org.au



SAPIA CODE OF PRACTICE



FOR THE INSTALLATION AND MAINTENANCE OF IMPACT ATTENUATING SURFACING SYSTEMS FOR PLAYGROUNDS

Wet Pour Rubber
Artificial Grass
Natural Turf
Loose Fill
Unitary Products
Multi-Layered Unitary Systems

www.sapia.org.au

SAPIA members elect their representatives on an annual basis to oversee association business. In September 2024 the following directors were nominated and confirmed to the Board.

Mark Edmondson joined the Board in 2000 and has served as Association President since 2004. Mark is a former elite tennis player, winning six grand slam tournaments, including the Australian Open. Mark got his builders licence and established his sports court construction business in 1992.. In that time, he oversaw the construction of more than 1,500 tennis courts and sports facilities, both domestic and commercial, throughout Sydney and country NSW and the ACT. He sold his business in 2020, and now consults on sports facility projects. In his leisure time, Mark is usually found on the greens at his local Bayview Golf Club.

Ross Jordin was elected to the Board in 2001, and currently serves as Association Treasurer. He has been a part of the sports construction industry for over 40 years, initially as a sub-contractor and later as a tennis court builder. Through his businesses Jordin Sports Constructions, Allsports Constructions and Centre Court Constructions, he has been involved in all elements of sports construction and leisure-time requirements, including earthworks, retaining walls, dynamic and concrete base construction, fencing, lighting, accessories and general landscape installations.

Grant Humphreys was elected to the Board in 2015. As director of sports testing institutes Acousto-Scan and PlayTest, Grant travels within Australasia and around the world testing sporting surfaces to standards set by FIFA, IRB, FIH, AFL/CU and ITF. He is a member of a number of technical and Standards steering committees and has years of experience in the testing and performance of synthetic sport surfaces. In 2024 he was elected Association Vice President.

Jim Tritt was elected to the SAPIA Board in 2016. After graduating with degrees in chemistry and biology from Ohio Wesleyan University, Jim started his career with APT USA in 1995 as a research chemist. Jim has extensive knowledge in the design, manufacture and distribution of synthetic turf systems, including elastic layers, infill materials and adhesives. He is also experienced in the development of polyurethane coatings with a particular emphasis on sports applications including athletic tracks, tennis courts, gymnasium floors and protective coatings for concrete. Within his current role at Sport Group, he is liaising with governing bodies including ITF, FIFA, World Rugby, AFL/CA, IAAF and World Bowls.

Mark Cunningham was elected to the Board in 2016. Mark established his company Synthetic Grass and Rubber Surfaces Australia on Sydney's northern beaches in 1994. His company provides synthetic grass and rubber surfacing to schools, childcare centres, playgrounds and sporting areas. With Mark's extensive knowledge of his products and the industry he has designed a range of synthetic grass that is suitable for any budget and is ideal for the Australian climate. The rubber surfaces are non-toxic, anti-slip and comply with soft fall safety requirements.

Darren Scanlan was elected to the SAPIA Board in 2020. Darren completed his Landscaping Apprenticeship in 1988 and spent his early career as a self-employed contractor, specialising in brick paving and swimming pool construction. After a period in sales for a sporting goods importer he came back to the construction industry, installing synthetic grass into day-care centres and tennis courts. In the early 2000's his laser grading business was contract building and laying synthetic grass tennis courts for various Victorian tennis court companies. Darren commenced as a subcontractor for Grassports Australia (En Tout Cas) in 2005; in 2010 he joined the team as Project Manager and was promoted to General Manager in 2013.

Arun Kosh was elected to the SAPIA Board in 2020. He is the General Manager of the Queensland division of Surfacing Contractors Australia. A background in landscape design and construction led to Arun working in the commercial playground industry before joining SCA in 2013. Arun has worked on projects in the UK, the Middle East and Asia over his 25 years in the industry. This varied and challenging work in the fields of play and recreation means that he has a wealth of knowledge and experience that make him an effective advocate for the industry.

Gregory Stannard was elected to the SAPIA Board in 2024. He is the General Manager of Grand Slam Sports Equipment. With over 30 years' experience in manufacturing across diverse industries and two continents, Greg brings extensive expertise and unwavering commitment to delivering high-quality solutions.

Nathan Weber was elected to the SAPIA Board in 2024. After completing a Bachelor of Built Environment at the University of South Australia, he started working in the family business Surfacing Contractors Australia. Nathan is he is now co-director of Australian Surfacing Supplies. With 10 years hands-on experience in the sports and recreation industry, he is dedicated to a culture of best practice throughout the sector.

Spencer Wallace was elected to the SAPIA Board in 2024. He is the owner and founder of Glooloo Surfacing, which he commenced in 2010. He holds a Bachelor of Arts Hons (Leisure & Recreation Management) and a Cert III in Landscape Construction. With over 25 years industry experience in Australia and the UK, he specialises in wetpour rubber, acrylic sports courts and landscape synthetic grass. His collaboration with architects, engineers and designers has pushed the limits and possibilities of rubber and grass in playscapes.

Brenden Dawson was elected to the SAPIA Board in 2024. Brenden is the Director of Grassports Australia (QLD) and holds expertise in the synthetic sports surfaces industry. He has a strong background in design, project management, installation, and maintenance of sporting facilities. With 25 years of experience include building and managing numerous high-profile installations across Queensland, Brenden ensures top-quality standards and client satisfaction. Brenden values SAPIA as an organisation committed to promoting best practices, industry standards, and professional development and appreciates the association's role in fostering innovation and collaboration within the sports and play industry.



SPORTS & PLAY

INDUSTRY ASSOCIATION LIMITED

NATIONAL CONFERENCE

18-19 September 2025

Oaks Cypress Lakes Resort, Pokolbin

Hunter Valley-NSW-Australia

Industry Innovators for 25 Years



Celebrating SAPIA's Silver Jubilee





SPORTS & PLAY

INDUSTRY ASSOCIATION LIMITED

