

SPORTS & PLAY

INDUSTRY ASSOCIATION LIMITED

NATIONAL CONFERENCE

27 - 28 AUGUST 2026
MANTRA ON SALT BEACH
KINGSCLIFF NSW AUSTRALIA

PATHWAYS TO SUCCESS

Blacktac: Bellerive PS, Tasmania

mantra
on salt beach



APT ADVANCED
POLYMER
TECHNOLOGY

FEEL SOMETHING THAT STAYS WITH YOU



📍 Headland Sunrise,
Cabarita Beach



visitnsw.com

feel  new south wales

VENUE AND LOCATION

EXCEPTIONAL CONFERENCE FACILITIES IN A BEAUTIFUL BEACHFRONT LOCATION

Located just south of the New South Wales/Queensland border, Mantra on Salt Beach offers exceptional conference and accommodation facilities. Situated 90 minutes' drive south of Brisbane, 30 minutes north of Byron Bay and 15 minutes from Gold Coast Airport, Mantra on Salt offers direct access to the beach, with a number of bars, a variety of cafes and restaurants as well as retail stores in the adjacent Salt Village. Offering elegance and style to complement its naturally beautiful surroundings, Mantra on Salt is the ultimate coastal getaway. For relaxation, choose between its two lagoon pools, rock spa, tennis courts, gym and day spa.



GETTING THERE

Self-drive: Coming from the south side, follow the Pacific Highway (M1) north, exiting at Clothiers Creek Road, then follow the signs for Kingscliff. If driving from the north, take the Pacific Highway (M1) south, then 11km past Gold Coast Airport, take the Chinderah/Kingscliff exit, continue on Tweed Coast Road for 9km, take Cudgen Road and Casuarina Way, then follow the signs to the Mantra and Peppers Resorts.

Transfers from Gold Coast Airport: Taxis, Ubers and rental cars are available at the airport. For private coach or limousine transfers contact Tweed Coast & Country Limousines (Terry and Robyn) Phone: 0409 661 589 Email: tcclimos@bigpond.com If you would like to share a shuttle to the Mantra with other delegates, please note flight arrival details on the conference registration form.



ACTIVITIES

SOMETHING FOR EVERYONE AT THE SAPIA NATIONAL CONFERENCE

Thursday 27 August 2026

- 10.00 Choice of Edo Trophy Social Golf or SAPIA Long Lunch
- 6 p.m. Annual General Meeting
- 7 p.m. Welcome Party on the Pool Deck

Friday 28 August 2026

- 9 a.m. National Conference and Mini-Expo
- 7 p.m. Annual Gala Dinner
- 8 p.m. Presentation of the 2026 SAPIA Industry Awards
- 9 p.m. Fund-Raising Industry Auction



THURSDAY 27 AUGUST

SOCIAL OPTION # 1 – THE EDO TROPHY GOLF TOURNAMENT



COOLANGATTA-TWEED HEADS GOLF COURSE

SAPIA's annual Ambrose rules social golf tournament, the **Edo Trophy**, will be held on Thursday 27 August, with tee off at 10.30 a.m. at Coolangatta-Tweed Heads Golf Club. Numbers are limited to 30 players. Please arrange to meet at the pro shop at 10.00 a.m. to ensure a timely start. We have been allocated the West Course. No prior golfing experience is necessary, as the emphasis is on fun. SAPIA members and guests are welcome to participate. Club hire is available for \$40pp. Trophies for the winning team members will be presented during our Annual Gala Dinner on Friday night. Cooly-Tweed Golf Course is 15 minutes' drive north of the Mantra, or you could come straight from the airport. A shuttle can be arranged for any golfers already at the Mantra on Thursday morning - please advise if you require this.



Green fees and cart hire for the 2026 Edo Trophy tournament have been generously sponsored by TigerTurf Australia.

SOCIAL OPTION # 2 – BUS TOUR & SAPIA LONG LUNCH



TWEED VALLEY BUS TOUR AND SAPIA LONG LUNCH

Tweed Coast & Country Limousines will take us on a 6-hour bus tour through the Tweed Valley hinterland with scenic views of Wollumbin (Mount Warning as named by Captain Cook), featuring:

- 10 a.m. Whale spotting at Point Danger
- 11 a.m. Behind-the-scenes Tastings Trail Tour at Husk Farm Distillery
- 12 noon Pub Lunch at historic Tumbulgum Tavern on the Tweed River
- 2 p.m. Tweed Valley Farmhouse Cheeses (includes cheese and gelato tasting and beverage e.g. glass of wine or beer, tea or coffee)

Pickup from the Mantra Foyer is at 9.30 a.m. and we aim to be back at the hotel around 3:30 pm. Book early as numbers are limited.

Cost: Prepaid Bus, Distillery Tastings & Cheese Factory \$120; Lunch payable on consumption to Tavern.

THURSDAY 27 AUGUST

ANNUAL GENERAL MEETING

Plantation Rooms 2 and 3, Mantra Ground Floor Conference Rooms

6.00 p.m. until 7.00 p.m.



All SAPIA members are encouraged to attend our annual general meeting. The President will present his annual report, the treasurer will table the financial report and the election of the SAPIA Board for the following twelve months will be held. More details on nominating and voting for a position on the SAPIA Board and other constitutional matters will be furnished closer to the event. SAPIA is a not-for-profit member association, founded to forward the interests of its

members and promote industry best practice. Come along and have a voice in the management of your association.

WELCOME PARTY

Pool Deck, Mantra On Salt

7.00 p.m. until 9.30 p.m.

Immediately following our AGM on Thursday evening, we will gather on the Pool Deck for our pre-conference **Welcome Party**. Canapes and beverages will be served from 7 p.m. till 9.30 p.m. In line with previous years, we invite guests to wear colourful outfits. Our Welcome Party is a wonderful opportunity to catch up with old friends and make new ones, to network with fellow industry supporters, to meet prospective customers and potential suppliers.



FRIDAY 28 AUGUST

NATIONAL CONFERENCE & EXPO

Plantation Rooms 2 and 3, Mantra Ground Floor Conference Rooms 9.00 a.m. – 5.00 p.m.

The 2026 **SAPIA National Conference** will be held in the Mantra's Plantation Rooms, with registration from 8.30 a.m. The conference program commences at 9 a.m. and concludes at 5 p.m.

Morning and afternoon teas as well as lunch are included in your conference fee. A barista coffee cart has been sponsored by **GreenSet** and will provide coffee throughout the day.

A limited number of **Exhibition Spaces** or **Exhibition Tables** will be situated around the adjacent hotel lobby for those members who wish to exhibit their products or services to delegates, at a cost of \$300+GST each. These spaces are available on a first come basis, so please reserve your space early.

We have an exciting selection of presenters organised to educate, inform, enhance and entertain your day, so keep an eye out for the announcement. You cannot afford to miss this conference.

GALA DINNER

Plantation Rooms 2 and 3, Mantra Ground Floor Conference Rooms 7.00 p.m. until 11 p.m.

Our **Annual Gala Dinner** will commence at 7.00 p.m. back in the Plantation Rooms, with pre-dinner drinks followed by a three course meal (alternate serves) and beverages. (Please advise in advance of any dietary variations, e.g. Gluten Free, Dairy Free, Pork Free, Vegetarian, Vegan or other requirements—the hotel chefs are happy to provide alternate meals.) Partners and other non-delegate guests are welcome.

During dinner, a video of all entries received in this year's **Industry Awards** competition will be shown, winners will be announced and trophies presented. Our fund-raising **Auction** of items donated by our members and supporters will also be conducted during our Annual Dinner. If you wish to donate products or services, please contact the SAPIA office.



BENEFITS OF ASSOCIATION

The Sports & Play Industry Association is the Australasian peak body for those involved in the sports, recreation, leisure and playspace construction industry. Our members include designers, engineers, contractors, suppliers, manufacturers and professional consultants. The aim of SAPIA's annual National Conferences is to provide members and interested parties with the opportunity to:

- Learn about new techniques and ways to reduce or overcome issues in their working lives;
- Meet sports governing bodies' key personnel and hear about their organisations' plans for the future;
- Acquaint themselves with suppliers and manufacturers of products and services to the industry;
- Converse with the SAPIA Board of Directors and have a voice in the running of the Association;
- View the entries and celebrate with the winners of the 2026 SAPIA Industry Awards competition;
- Catch up with old friends and form new business relationships;
- Have fun and enjoy each others' company at our Welcome Party and Annual Gala Dinner.

Please support your Association by attending, ensuring that the industry remains strong by assisting your employees and encouraging your sub-contractors and industry contacts to attend, and encouraging others who you feel may benefit from SAPIA membership to come along and see who we are and how we operate.

Our delegate fees have been kept to an absolute minimum thanks to the generosity of our sponsors, allowing member companies both big and small to attend. Our Annual Dinner charges for non-delegates are provided at cost price, so please feel free to invite partners and friends.

Although we are part of Australasia's construction industry, we represent a niche, specialised sub-section, and our conference presenters in 2026 have been chosen for maximum relevance and interest to members of our industry. For suppliers and consultants, the SAPIA National Conference affords you a valuable opportunity to meet with current and prospective customers. For contractors, our event allows you to liaise with manufacturers and suppliers, improve your technical knowledge and stay up to date with current trends. The enjoyment to be had by all from socialising with your peers and industry personnel is priceless. Our 2026 presenters will be announced shortly.



S A P I A S P O N S O R S



STRATEGIC SPONSOR



GOLD SPONSOR



SILVER SPONSOR



BRONZE SPONSOR



GOLF TOURNAMENT SPONSOR



COFFEE CART SPONSOR



OTHER SPONSORSHIP OPPORTUNITIES, INCLUDING BRONZE SPONSORSHIP, ARE STILL AVAILABLE.
CONTACT SAPIA OFFICE TO DISCUSS.

ACCOMMODATION

We have reserved a limited number of rooms to ensure delegates do not miss out at this popular resort. Please book early, directly with SAPIA via the accommodation booking form. The following rates have been negotiated per night:

Room Type	Cost per night				
	1 guest	2 guests	3 guests	4 guests	5 guests
Hotel Room	\$228	\$254			
1 Bedroom Spa Suite	\$282	\$308	\$351*		
2 bedroom Pool View Spa Suite		\$568	\$594	\$620	\$663*
2 bedroom Ocean View Spa Suite		\$578	\$604	\$630	\$673*

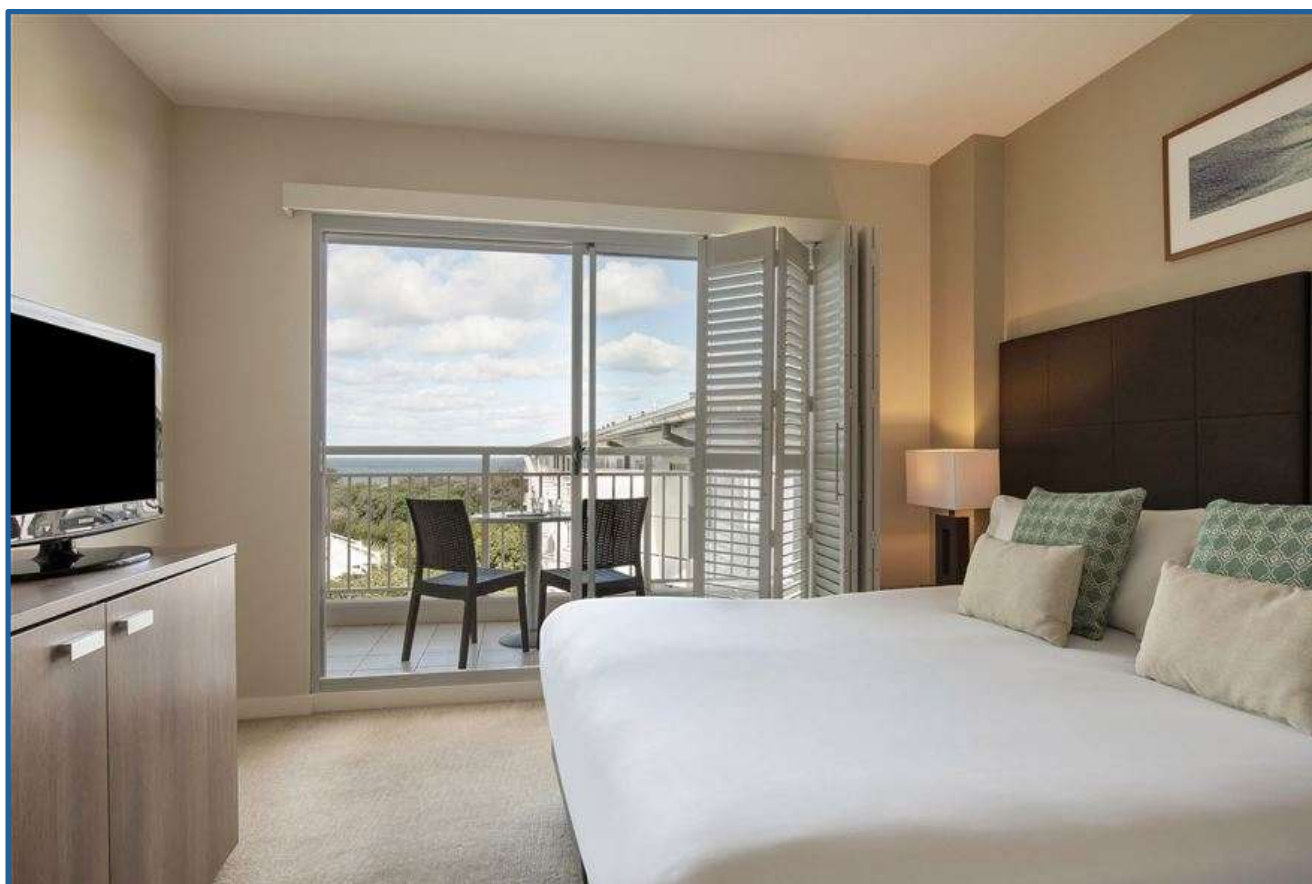
** denotes extra person on rollaway bed
Above prices include breakfast at the adjacent Peppers Resort*

The Mantra on Salt is an Accor property: if you have an Accor card you may be eligible for a discount – contact Accor or the Mantra directly via their reservation [page](#) to book.

Reception Hours: Reception is open 24 hours.

Check in time - from 2.00 p.m.

Checkout time - 11:00 a.m.



Example of Mantra On Salt hotel room. See <https://www.mantraonsaltbeach.com.au/rooms/> for other room types.

REGISTRATION

THURSDAY 27 AUGUST 2026	FRIDAY 28 AUGUST 2026
10 a.m. Choice of Edo Trophy Social Golf or Long Lunch	9 a.m. National Conference and Mini-Expo
6 p.m. Annual General Meeting	7 p.m. Annual Gala Dinner
7 p.m. Welcome Party on the Pool Deck	8 p.m. Presentation of 2026 SAPIA Industry Awards
	9 p.m. Fund-Raising Industry Auction

YOUR BUSINESS NAME:

DAY 1 – THURSDAY 27 AUGUST 2026

SOCIAL OPTION #1: THE EDO TROPHY GOLF TOURNAMENT

MEET AT MANTRA RECEPTION AT 9.30 A.M. OR COOLY/TWEED PRO SHOP AT 10.00 AM FOR TEE OFF AT 10.30
18 holes at Coolangatta/Tweed Golf Course: Numbers limited to 30 players. Green fees and cart hire have been sponsored by Tiger Turf Australia. Club hire is available from the pro shop at \$40 per set.

PLAYER'S NAME/S AND CONTACT MOBILE NUMBER/S:

HANDICAP/S IF AVAILABLE:

CLUB HIRE REQUIRED?

IF SO, INDICATE LEFT OR RIGHT HANDED:

SOCIAL OPTION #2: TWEED HINTERLAND BUS TOUR INCLUDING SAPIA LONG LUNCH

MEET AT MANTRA RECEPTION AT 9.30 A.M.

This scenic tour includes stops at Husk gin and rum distillery, lunch at Tumbulgum Tavern on the Tweed River, cheese and gelato tastings at Burringbar. Time frame approx. 9.30 a.m. - 3:30 pm.

Cost: \$120 per person includes bus, distillery and cheese factory. Lunch payable to the venue at diners' cost.

PASSENGERS' NAMES AND CONTACT MOBILE NUMBERS:

ANNUAL GENERAL MEETING

MANTRA ON SALT CONFERENCE ROOMS 6 P.M. – 7 P.M.

Note: only one representative per member company may vote, but all are welcome to attend.

ATTENDEES' NAMES:

WELCOME PARTY

MANTRA ON SALT POOL DECK 7 P.M. – 9.30 P.M.

Canapes and beverages will be served on the pool deck. Let's continue the recent tradition of wearing colourful clothing to brighten up the event. Please advise any dietary requirements of guests.

Cost: \$130 per person

ATTENDEES' NAMES:

PAGE 2 OF REGISTRATION OVER PAGE

REGISTRATION

DAY 2 – FRIDAY 28 AUGUST 2026

SAPIA NATIONAL CONFERENCE

MANTRA CONFERENCE ROOMS 9.00 AM – 5.00 PM

Full day delegates receive a continuous offering of a variety of herbal teas, morning and afternoon tea, lunch, wi-fi, complimentary parking. Barista coffee cart has been sponsored by GreenSet.

Cost: \$370 per person

DELEGATES' NAMES:

SAPIA MINI-EXPO

MANTRA FOYER 9.00 AM – 5.00 PM

Our mini expo is limited to 10 spaces with covered trestle tables, located in the Foyer adjoining the Conference Room. Promote your products and services to delegates, at the very reasonable price of \$300+GST per space/table.

EXHIBITORS' NAMES:

SAPIA ANNUAL GALA DINNER

MANTRA CONFERENCE ROOMS 7.00 PM – 11.00 PM

Our annual gala dinner comprises three courses (alternate serve) and four hours of premium beverages. The evening includes the presentation of the Awards program and Auction (see below). Cost: \$200 per person.

DINERS' NAMES:

SAPIA INDUSTRY AWARDS PRESENTATION

MANTRA CONFERENCE ROOMS 8.00 PM

During our Gala Dinner, the entries in our annual SAPIA Industry Awards presentation will be viewed, and winners will be announced and presented with trophies.

SAPIA FUND-RAISING AUCTION

MANTRA CONFERENCE ROOMS 9.00 PM

During our Gala Dinner, our annual Auction for goods and services donated by our members and friends will be held with MC Craig Willis acting as Auctioneer. If you would like to make a donation to the Auction, please send a photo, description and recommended retail price as a guide to the SAPIA Office as soon as possible. This is a unique way to promote your products to guests.

NATIONAL CONFERENCE

27 - 28 AUGUST 2026

MANTRA ON SALT BEACH
KINGSCLIFF NSW AUSTRALIA

ACCOMMODATION BOOKING FORM TO BE SENT TO office@sapia.org.au

Arrival Date:

Departure Date:

Number of Nights:

Name/s of Guests:

Accommodation Requested:

Mark with an 'X'	Room Type	Cost per night				
		1 guest	2 guests	3 guests	4 guests	5 guests
	Hotel Room	\$228	\$254			
	1 Bedroom Spa Suite	\$282	\$308	\$351*		
	2 bedroom Pool View Spa Suite		\$568	\$594	\$620	\$663*
	2 bedroom Ocean View Spa Suite		\$578	\$604	\$630	\$673*

Above prices include breakfast at Peppers Resort.

** Indicates on rollaway bed*

For details of room inclusions, visit: <https://www.mantraonsaltbeach.com.au/rooms/>

The Mantra on Salt Beach is an Accor property. If you are an Accor member and wish to use your points, or accrue extra points, please book with Accor or the hotel directly on 1800 811 454.

Things to consider:

On Thursday 27 August, we have a 10 a.m. start for our annual social golf tournament at Coolangatta Tweed Golf Course, and we are also in the process of organising a bus tour of the local area and attractions, also starting at 10 a.m. If you would like to join either of these activities, you will need to either organise an early start or book your accommodation to arrive on Wednesday night 26 August.

If arriving at Gold Coast airport, it is a 15-minute drive to the Mantra On Salt Beach. There are hire cars, Ubers and there is also a shuttle service available from the airport. The more people sharing the shuttle, the cheaper the cost per passenger, so if you would like to share a shuttle please let me know your flight details and arrival time and I will organise it. Please state if you will be bringing golf clubs in the shuttle.

FLIGHT DETAILS:

ARRIVAL TIME:

NUMBER OF PASSENGERS FOR SHUTTLE:

GOLF CLUBS IN SHUTTLE?:

THINGS TO DO

- **SALT Beach** - the unspoilt white sand beach is located right at the front of the Mantra and Peppers Resorts and is patrolled from September to April every year.
- **The Spa at SALT** offers holistic spa therapies in a beautiful and tranquil environment. Massage, facials and body therapies are provided by a skilled team of outstanding spa therapists.
W: <http://thespaatsalt.com.au>
P: 02 6674 3233
E: info@thespaatsalt.com.au
- **Salt Bar & Bistro** next door to the Mantra, at the beach end of Bells Boulevard.
Kitchen closes 8.30 p.m., bar closes 10.00 p.m.
W: <https://saltbar.com.au/>
P: (02) 8322 2085
E: info@saltbar.com.au
- **Bike Riding and Walking Tracks** – fronting the Resorts is 7kms of cycling and walking tracks along the foreshore from Kingscliff to Cabarita. Bike hire is available from reception (costs apply).
- **Tropical Fruit World** - more than a tourist attraction, more than a commercial working farm. Their **Tractor Tour & Fruit Tasting** takes you on an unforgettable journey through lush landscapes filled with nature's finest fruity treasures. Taste the unique flavours of exotic fruits, meet and feed friendly farm animals, discover the rich history of this remarkable region.
W: <http://www.tropicalfruitworld.com.au>
P: 02 6677 7222
E: info@tropicalfruitworld.com.au
- **Husk Distillers—Distillery & Cellar Door** - drinks, food, tours on this family farm in the Tweed - the home of Ink Gin and Husk Rum. Open daily from 11am.
W: <http://www.huskdistillers.com/>
P: 02 6675 9149
E: info@huskdistillers.com
- **Tweed Valley Whey Farmhouse Cheeses** from pasture to platter, this dairy farm shop sells its farm-made range of artisan cheeses, yoghurts and gelato. The cheese and antipasto platters showcase their cheeses and other artisan producers.
W: <https://www.tweedvalleycheeses.com.au/>
P: 02 6677 1111
E: tweedvalleycheeses@gmail.com
- **Currumbin Wildlife Sanctuary** – located 25 minutes north of Mantra on Salt, with 27 hectares to explore and more than 1,000 animals to discover, there's always something exciting happening!
W: <http://www.cws.org.au>
P: 1300 886 511
E: enquiries@cws.org.au
- **Whale Watching** – departing from Chinderah, just 10 minutes north of Kingscliff, whales can be seen from June to November.
W: <https://coolyecoadventures.com.au/tour/whale-watching/>
P: 1300 163 326
E: info@coolyecoadventures.com.au
- **Tweed Regional Gallery & Margaret Olley Art Centre**
2 Mistral Road (corner Tweed Valley Way), Murwillumbah South NSW 2484
W: <https://gallery.tweed.nsw.gov.au/Home>
P: 02 6670 2790
E: tweedart@tweed.nsw.gov.au
- **Kingscliff Beach Hotel**
102 Marine Parade, Kingscliff NSW 2487
Bistro, bottle shop, open 10.00 a.m. – 1.30 a.m.
W: <https://kingscliffbeachhotel.com.au/>